



<http://www.ebiz-tcf.eu>

DRAFT

Extract from IMPLEMENTATION GUIDE
TRANSACTION "MCI CIRCULARITY PRELIMINARY
INFORMATION"

Version: draft

Date of release: 10/7/2023

Document code: TRC017e

technical Documentation: <http://www.ebiz.enea.it>

XML Schemas repository: <http://www.ebiz.enea.it/moda-ml/repository/schema/draft/default.asp>

Guides repository: <http://www.ebiz.enea.it/moda-ml/repository/guide/draft/default.asp>

Guide filename: TRC017-eBIZ-MciCircularityPreliminaryInformation.pdf

0. PREMISE

This document contains a proposal for the updating and extension of eBIZ specifications starting from the eBIZ version 2018. Under the name of 'Draft version' it is reported the result of an extensive work of analysis and consultation aimed at developing and maintaining eBIZ specifications.

In particular, the content of this proposal is the result of various activities, mainly those carried out within the framework of the **TRICK project** funded by the European Commission: grant agreement 958352, call H2020-LOW-CARBON-CIRCULAR-INDUSTRIES-2020 / H2020-LCCI-2020-EASME-twostage.

The technical contents are backwards compatible with the latest official published version, with the exclusion of the totally new concepts added explicitly for the version that are thought as incremental evolution of the knowledge base.

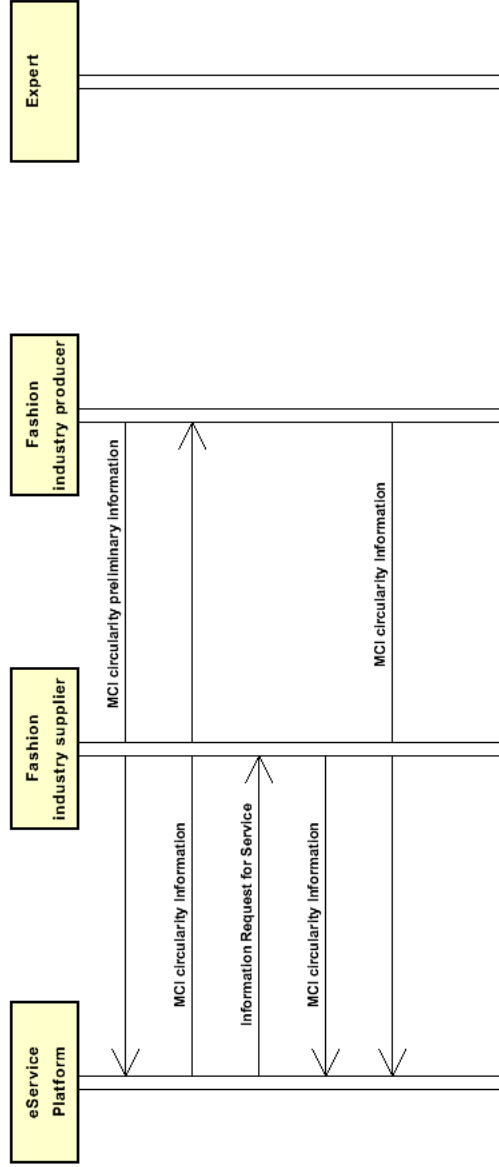
1. BUSINESS DESCRIPTION

1.1 Scope

This guide aims to illustrate the standard XML format of the document type "Informazioni preliminari MCI", providing instructions for its use in the context of a TRANSPARENCY SYSTEM involving Fashion Manufacturers, their customers, third parties and in case customs authorities, eBusiness and eCommerce platforms. All the rules necessary for the construction and validation of the document are expressed through a specific XML schema, which is presented in detail in the paragraph "Implementation Guide".

1.2. Possible scenario

S2.1 Material Circularity Assessment service execution



2. IMPLEMENTATION GUIDE

2.1 General structure of XML document

All the business data that can be exchanged through this class of documents are shown in the following "document structure", that provides a simplified vision of the Schema.

In particular:

- the two numbers following each element define its "cardinality" (minimum and maximum number of occurrences); the minimum equal zero indicates that the element is optional, the minimum greater than zero indicates that is mandatory;
- the bold character denotes the complex elements (aggregates of simple elements) that were built for the sake of functionality and re-usability of some complex informations sets. The child elements in each parent element are easily spotted as "indented";
- the symbol "@" denotes an attribute of the preceding element; here "the usage indicator (optional, required, ...)" is shown in square brackets.

Structure

MCIPreliminaryInformationSupply

@version [Optional] [Default= draft]

@useProfile [Optional]

@disclosureLevel [Optional]

@storageAction [Optional]

| **SRV**header 1-1

| msgID 0-1

| msgDate 0-1

| @dateForm [Optional]

| **senderParty** 1-1

| @role [Optional]

| @sender [Optional]

| id 1-1

| @numberingOrg [Optional]

| legalName 0-1

| dept 0-1

| subDept 0-1

| person 0-1

| @email [Optional]

| @phone [Optional]

| @fax [Optional]

| street 0-1

| city 0-1

| subCountry 0-1

| country 0-1

| postCode 0-1

| **geoCoordinates** 0-1

| @um [Optional] [Default= DEGD]

| @geoRefSystem [Optional]

| | xGeoCoord 1-1

| | yGeoCoord 1-1

| | zGeoCoord 0-1

| **receiverParty** 1-1

| @role [Optional]

| @sender [Optional]

| id 1-1

| @numberingOrg [Optional]

| legalName 0-1

| dept 0-1

| subDept 0-1

| person 0-1

| @email [Optional]

| @phone [Optional]

| @fax [Optional]

| street 0-1

| city 0-1

| subCountry 0-1

| country 0-1

| postCode 0-1

```

| | | geoCoordinates 0-1
| | | @um [Optional] [Default= DEGD]
| | | @geoRefSystem [Optional]
| | | | xGeoCoord 1-1
| | | | yGeoCoord 1-1
| | | | zGeoCoord 0-1
| | | platformServiceReference 1-1
| | | platformServiceCode 1-1
| | | | @codeList [Optional]
| | | serviceTicketID 0-1
| | | serviceRequestedAction 1-1
| | | | @codeList [Optional]

```

ProductIdentification 1-1

```

| | uniqueProductID 1-1
| | | @schemeID [Required]
| | objectTypeCode 1-1
| | description 0-9
| | | @ln [Optional]

```

- choose -

rawCode 0-2

```

| | | @numberingOrg [Optional]
| | | art 1-1
| | | | @numberingOrg [Optional]
| | | | @codeList [Optional]
| | | | @listName [Optional]
| | | | @listVersion [Optional]
| | | color 0-1
| | | | @numberingOrg [Optional]
| | | | @codeList [Optional]
| | | | @listName [Optional]
| | | | @listVersion [Optional]
| | | added 0-9
| | | | @numberingOrg [Optional]
| | | | @addType [Optional]
| | | description 0-unbounded
| | | | @ln [Optional]

```

- or -

yarnCode 0-2

```

| | | @numberingOrg [Optional] [Default= CL]
| | | art 1-1
| | | | @numberingOrg [Optional]
| | | | @codeList [Optional]
| | | | @listName [Optional]
| | | | @listVersion [Optional]
| | | color 0-1
| | | | @numberingOrg [Optional]
| | | | @codeList [Optional]
| | | | @listName [Optional]
| | | | @listVersion [Optional]
| | | added 0-9
| | | | @numberingOrg [Optional]
| | | | @addType [Optional]
| | | description 0-unbounded
| | | | @ln [Optional]

```

- or -

texCode 0-2

```

| | | @numberingOrg [Optional]
| | | art 1-1
| | | | @numberingOrg [Optional]
| | | | @codeList [Optional]
| | | | @listName [Optional]
| | | | @listVersion [Optional]
| | | pattern 0-1
| | | | @numberingOrg [Optional]
| | | | @codeList [Optional]
| | | | @listName [Optional]
| | | | @listVersion [Optional]

```

| | | color 0-1
| | | @numberingOrg [Optional]
| | | @codeList [Optional]
| | | @listName [Optional]
| | | @listVersion [Optional]
| | | added 0-9
| | | @numberingOrg [Optional]
| | | @addType [Optional]
| | | description 0-unbounded
| | | @ln [Optional]

- or -

| | | **acsCode 1-2**
| | | @numberingOrg [Optional]
| | | art 1-1
| | | @numberingOrg [Optional]
| | | @codeList [Optional]
| | | @listName [Optional]
| | | @listVersion [Optional]
| | | pattern 0-1
| | | @numberingOrg [Optional]
| | | @codeList [Optional]
| | | @listName [Optional]
| | | @listVersion [Optional]
| | | color 0-1
| | | @numberingOrg [Optional]
| | | @codeList [Optional]
| | | @listName [Optional]
| | | @listVersion [Optional]
| | | added 0-9
| | | @numberingOrg [Optional]
| | | @addType [Optional]
| | | description 0-unbounded
| | | @ln [Optional]

- or -

| | | **garmentPartCode 0-2**
| | | @numberingOrg [Optional]
| | | gPart 1-1
| | | mod 1-1
| | | @numberingOrg [Optional]
| | | @codeList [Optional]
| | | @listName [Optional]
| | | @listVersion [Optional]
| | | fabric 0-1
| | | @numberingOrg [Optional]
| | | @codeList [Optional]
| | | @listName [Optional]
| | | @listVersion [Optional]
| | | color 0-1
| | | @numberingOrg [Optional]
| | | @codeList [Optional]
| | | @listName [Optional]
| | | @listVersion [Optional]
| | | added 0-19
| | | @numberingOrg [Optional]
| | | @addType [Optional]
| | | size 0-1
| | | @numberingOrg [Optional]
| | | @codeList [Optional]
| | | @listName [Optional]
| | | @listVersion [Optional]
| | | description 0-unbounded
| | | @ln [Optional]

- or -

| | | **garmentCode 0-2**
| | | @numberingOrg [Optional]
| | | - choose -
| | | | **garmentCodeB 1-1**
| | | | @numberingOrg [Optional]

```

| | | mod 1-1
| | |   @numberingOrg [Optional]
| | |   @codeList [Optional]
| | |   @listName [Optional]
| | |   @listVersion [Optional]
| | | fabric 0-1
| | |   @numberingOrg [Optional]
| | |   @codeList [Optional]
| | |   @listName [Optional]
| | |   @listVersion [Optional]
| | | color 0-1
| | |   @numberingOrg [Optional]
| | |   @codeList [Optional]
| | |   @listName [Optional]
| | |   @listVersion [Optional]
| | | garmentVariant 0-9
| | |   variantType 1-1
| | |     @numberingOrg [Optional]
| | |     @codeList [Optional]
| | |     @listName [Optional]
| | |     @listVersion [Optional]
| | |   variantCode 1-1
| | |     @numberingOrg [Optional]
| | |     @codeList [Optional]
| | |     @listName [Optional]
| | |     @listVersion [Optional]
| | | drop 0-1
| | |   @numberingOrg [Optional]
| | |   @codeList [Optional]
| | |   @listName [Optional]
| | |   @listVersion [Optional]
| | | size 0-1
| | |   @numberingOrg [Optional]
| | |   @codeList [Optional]
| | |   @listName [Optional]
| | |   @listVersion [Optional]
| | | artGroup 0-1
| | |   @numberingOrg [Optional]
| | |   @codeList [Optional]
| | |   @listName [Optional]
| | |   @listVersion [Optional]
| | | added 0-9
| | |   @numberingOrg [Optional]
| | |   @addType [Optional]
| | | description 0-unbounded
| | |   @ln [Optional]
| | | - or -
| | | garmentCodeA 1-1
| | |   art 1-1
| | |     @numberingOrg [Optional]
| | |     @codeList [Optional]
| | |     @listName [Optional]
| | |     @listVersion [Optional]
| | |   description 0-unbounded
| | |   @ln [Optional]
| | | - end choose -
| | | - end choose -
| | | note 0-99
| | |   @numberingOrg [Optional]
| | |   @codeList [Optional]
| | |   @noteLabel [Optional]
| | |
| | | productReferenceQty 0-1
| | |   @um [Required]
| | |
| | | billOfComponents 1-1
| | |   @um [Required]
| | |   @limitedByDisclosureIndicator [Optional]

```

```

| @exhaustiveInformation [Required]
| @disclosureLevel [Required]
| @storageAction [Required]
|   productReferenceQty 0-1
|   @um [Required]
|   productComponent 0-unbounded
|   @internallyPerformed [Required]
|     uniqueProductID 1-1
|     @schemeID [Required]
|   - choose -
|   rawCode 0-2
|     @numberingOrg [Optional]
|       art 1-1
|       @numberingOrg [Optional]
|       @codeList [Optional]
|       @listName [Optional]
|       @listVersion [Optional]
|       color 0-1
|       @numberingOrg [Optional]
|       @codeList [Optional]
|       @listName [Optional]
|       @listVersion [Optional]
|       added 0-9
|       @numberingOrg [Optional]
|       @addType [Optional]
|       description 0-unbounded
|       @ln [Optional]
|   - or -
|   yarnCode 0-2
|     @numberingOrg [Optional] [Default= CL]
|       art 1-1
|       @numberingOrg [Optional]
|       @codeList [Optional]
|       @listName [Optional]
|       @listVersion [Optional]
|       color 0-1
|       @numberingOrg [Optional]
|       @codeList [Optional]
|       @listName [Optional]
|       @listVersion [Optional]
|       added 0-9
|       @numberingOrg [Optional]
|       @addType [Optional]
|       description 0-unbounded
|       @ln [Optional]
|   - or -
|   texCode 0-2
|     @numberingOrg [Optional]
|       art 1-1
|       @numberingOrg [Optional]
|       @codeList [Optional]
|       @listName [Optional]
|       @listVersion [Optional]
|       pattern 0-1
|       @numberingOrg [Optional]
|       @codeList [Optional]
|       @listName [Optional]
|       @listVersion [Optional]
|       color 0-1
|       @numberingOrg [Optional]
|       @codeList [Optional]
|       @listName [Optional]
|       @listVersion [Optional]
|       added 0-9
|       @numberingOrg [Optional]
|       @addType [Optional]
|       description 0-unbounded
|       @ln [Optional]

```


- or -

acsCode 0-2

| @numberingOrg [Optional]
| art 1-1
| | @numberingOrg [Optional]
| | @codeList [Optional]
| | @listName [Optional]
| | @listVersion [Optional]
| pattern 0-1
| | @numberingOrg [Optional]
| | @codeList [Optional]
| | @listName [Optional]
| | @listVersion [Optional]
| color 0-1
| | @numberingOrg [Optional]
| | @codeList [Optional]
| | @listName [Optional]
| | @listVersion [Optional]
| added 0-9
| | @numberingOrg [Optional]
| | @addType [Optional]
| description 0-unbounded
| @ln [Optional]

- or -

garmentPartCode 0-2

| @numberingOrg [Optional]
| gPart 1-1
| mod 1-1
| | @numberingOrg [Optional]
| | @codeList [Optional]
| | @listName [Optional]
| | @listVersion [Optional]
| fabric 0-1
| | @numberingOrg [Optional]
| | @codeList [Optional]
| | @listName [Optional]
| | @listVersion [Optional]
| color 0-1
| | @numberingOrg [Optional]
| | @codeList [Optional]
| | @listName [Optional]
| | @listVersion [Optional]
| added 0-19
| | @numberingOrg [Optional]
| | @addType [Optional]
| size 0-1
| | @numberingOrg [Optional]
| | @codeList [Optional]
| | @listName [Optional]
| | @listVersion [Optional]
| description 0-unbounded
| @ln [Optional]

- or -

garmentCode 0-2

| @numberingOrg [Optional]

- choose -

garmentCodeB 1-1

| @numberingOrg [Optional]
| mod 1-1
| | @numberingOrg [Optional]
| | @codeList [Optional]
| | @listName [Optional]
| | @listVersion [Optional]
| fabric 0-1
| | @numberingOrg [Optional]
| | @codeList [Optional]
| | @listName [Optional]
| | @listVersion [Optional]

```

| | | | color 0-1
| | | |   @numberingOrg [Optional]
| | | |   @codeList [Optional]
| | | |   @listName [Optional]
| | | |   @listVersion [Optional]
| | | | | garmentVariant 0-9
| | | | |   variantType 1-1
| | | | |     @numberingOrg [Optional]
| | | | |     @codeList [Optional]
| | | | |     @listName [Optional]
| | | | |     @listVersion [Optional]
| | | | |   variantCode 1-1
| | | | |     @numberingOrg [Optional]
| | | | |     @codeList [Optional]
| | | | |     @listName [Optional]
| | | | |     @listVersion [Optional]
| | | | | drop 0-1
| | | | |   @numberingOrg [Optional]
| | | | |   @codeList [Optional]
| | | | |   @listName [Optional]
| | | | |   @listVersion [Optional]
| | | | | size 0-1
| | | | |   @numberingOrg [Optional]
| | | | |   @codeList [Optional]
| | | | |   @listName [Optional]
| | | | |   @listVersion [Optional]
| | | | | artGroup 0-1
| | | | |   @numberingOrg [Optional]
| | | | |   @codeList [Optional]
| | | | |   @listName [Optional]
| | | | |   @listVersion [Optional]
| | | | | added 0-9
| | | | |   @numberingOrg [Optional]
| | | | |   @addType [Optional]
| | | | | description 0-unbounded
| | | | |   @ln [Optional]
| | | | - or -
| | | | | garmentCodeA 1-1
| | | | |   art 1-1
| | | | |     @numberingOrg [Optional]
| | | | |     @codeList [Optional]
| | | | |     @listName [Optional]
| | | | |     @listVersion [Optional]
| | | | |   description 0-unbounded
| | | | |   @ln [Optional]
| | | | - end choose -
| | | - end choose -
| | | | refDoc 0-9
| | | |   @docType [Required]
| | | |   docID 1-2
| | | |     @numberingOrg [Optional]
| | | |   docDate 0-1
| | | |     @dateForm [Optional]
| | | |   season 0-1
| | | |     @numberingOrg [Optional]
| | | |     @codeList [Optional]
| | | |     @listName [Optional]
| | | |     @listVersion [Optional]
| | | |   itemID 0-1
| | | | | attachment 0-1
| | | | |   @uid [Optional]
| | | | |   fileName 0-1
| | | | |     @numberingOrg [Optional]
| | | | |   binaryObject 0-1
| | | | |     @format [Optional]
| | | | |     @mime [Optional]
| | | | |     @encoding [Optional]
| | | | |     @characterSet [Optional]

```

```

| | | | | externalReference 0-99
| | | | | | uri 1-1
| | | | | | @isURL [Optional] [Default= true]
| | | | | | mimeTypeCode 0-1
| | | | | | formatCode 0-1
| | | | | | encodingCode 0-1
| | | | | | characterSetCode 0-1
| | | | | | hashFootprint 0-1
| | | | | | @schemeID [Optional]
| | | | | | @hashMethod [Required]
| | | | | | blockChainReference 0-9
| | | | | | | uri 1-1
| | | | | | | @isURL [Optional] [Default= true]
| | | | | | | transactionReceipt 1-9
| | | | | certificate 0-9
| | | | | | @docStatusCode [Required]
| | | | | | @docValidity [Required]
| | | | | | | docID 1-1
| | | | | | | @numberingOrg [Optional]
| | | | | | | certificateID 1-1
| | | | | | | @schemeID [Optional]
| | | | | | | certificationStandardName 1-1
| | | | | | | @standardOwner [Required]
| | | | | | | docDate 1-1
| | | | | | | @dateForm [Optional]
| | | | | | | title 0-unbounded
| | | | | | | @ln [Optional]
| | | | | | | description 0-unbounded
| | | | | | | @ln [Optional]
| | | | | | | validityStart 0-1
| | | | | | | @dateForm [Optional]
| | | | | | | validityEnd 0-1
| | | | | | | @dateForm [Optional]
| | | | | | | validityExtensionDate 0-1
| | | | | | | @dateForm [Optional]
| | | | | | | sustainabilityCharacteristicText 0-99
| | | | | | | @ln [Optional]
| | | | | | | issuerParty 1-1
| | | | | | | | id 0-1
| | | | | | | | @numberingOrg [Optional]
| | | | | | | | legalName 0-1
| | | | | | | | dept 0-1
| | | | | | | | subDept 0-1
| | | | | | | | person 0-1
| | | | | | | | @email [Optional]
| | | | | | | | @phone [Optional]
| | | | | | | | @fax [Optional]
| | | | | | | | street 0-1
| | | | | | | | city 0-1
| | | | | | | | subCountry 0-1
| | | | | | | | country 0-1
| | | | | | | | postCode 0-1
| | | | | | | | geoCoordinates 0-1
| | | | | | | | @um [Optional] [Default= DEGD]
| | | | | | | | @geoRefSystem [Optional]
| | | | | | | | | xGeoCoord 1-1
| | | | | | | | | yGeoCoord 1-1
| | | | | | | | | zGeoCoord 0-1
| | | | | | | | issuerAccreditationInfo 0-1
| | | | | | | certifiedParty 1-1
| | | | | | | | id 0-1
| | | | | | | | @numberingOrg [Optional]
| | | | | | | | legalName 0-1
| | | | | | | | dept 0-1
| | | | | | | | subDept 0-1
| | | | | | | | person 0-1
| | | | | | | | @email [Optional]
| | | | | | | | @phone [Optional]

```

| @fax [Optional]
 | street 0-1
 | city 0-1
 | subCountry 0-1
 | country 0-1
 | postCode 0-1
 | **geoCoordinates 0-1**
 | @um [Optional] [Default= DEGD]
 | @geoRefSystem [Optional]
 | | xGeoCoord 1-1
 | | yGeoCoord 1-1
 | | zGeoCoord 0-1
 | **certifiedEntity 0-unbounded**
 | entityID 1-3
 | @schemeID [Required]
 | entityTypeCode 1-1
 | description 0-9
 | @ln [Optional]
 | **attachment 0-1**
 | @uid [Optional]
 | fileName 0-1
 | @numberingOrg [Optional]
 | binaryObject 0-1
 | @format [Optional]
 | @mime [Optional]
 | @encoding [Optional]
 | @characterSet [Optional]
 | **externalReference 0-99**
 | | uri 1-1
 | | @isURL [Optional] [Default= true]
 | | mimeTypeCode 0-1
 | | formatCode 0-1
 | | encodingCode 0-1
 | | characterSetCode 0-1
 | hashFootprint 0-1
 | @schemeID [Optional]
 | @hashMethod [Required]
 | **blockChainReference 0-9**
 | | uri 1-1
 | | @isURL [Optional] [Default= true]
 | | transactionReceipt 1-9
 | note 0-99
 | @numberingOrg [Optional]
 | @codeList [Optional]
 | @noteLabel [Optional]
 | **selfAssertion 0-99**
 | @disclosureLevel [Optional]
 | @docStatusCode [Optional]
 | sustainabilityCharacteristicText 0-99
 | @ln [Optional]
 | assertionCategory 1-1
 | description 1-99
 | @ln [Optional]
 | **issuerParty 1-1**
 | id 0-1
 | @numberingOrg [Optional]
 | legalName 0-1
 | dept 0-1
 | subDept 0-1
 | person 0-1
 | @email [Optional]
 | @phone [Optional]
 | @fax [Optional]
 | street 0-1
 | city 0-1
 | subCountry 0-1
 | country 0-1
 | postCode 0-1

geoCoordinates 0-1
 @um [Optional] [Default= DEGD]
 @geoRefSystem [Optional]
 | xGeoCoord 1-1
 | yGeoCoord 1-1
 | zGeoCoord 0-1
 issuerAccreditationInfo 0-1
selfAssertionEntity 0-unbounded
 entityID 1-3
 @schemeID [Required]
 entityTypeCode 1-1
 description 0-9
 @ln [Optional]
externalRefDoc 0-99
 docID 1-1
 @numberingOrg [Optional]
 docDate 0-1
 @dateForm [Optional]
 title 0-unbounded
 @ln [Optional]
 description 0-unbounded
 @ln [Optional]
 validityStart 0-1
 @dateForm [Optional]
 validityEnd 0-1
 @dateForm [Optional]
 documentType 0-1
issuerParty 0-1
 | id 0-1
 | @numberingOrg [Optional]
 | legalName 0-1
 | dept 0-1
 | subDept 0-1
 | person 0-1
 | @email [Optional]
 | @phone [Optional]
 | @fax [Optional]
 | street 0-1
 | city 0-1
 | subCountry 0-1
 | country 0-1
 | postCode 0-1
geoCoordinates 0-1
 @um [Optional] [Default= DEGD]
 @geoRefSystem [Optional]
 | xGeoCoord 1-1
 | yGeoCoord 1-1
 | zGeoCoord 0-1
 issuerAccreditationInfo 0-1
signatureInformation 0-1
 signatureTypeCode 1-1
signatoryParty 0-unbounded
 | id 0-1
 | @numberingOrg [Optional]
 | legalName 0-1
 | dept 0-1
 | subDept 0-1
 | person 0-1
 | @email [Optional]
 | @phone [Optional]
 | @fax [Optional]
 | street 0-1
 | city 0-1
 | subCountry 0-1
 | country 0-1
 | postCode 0-1
geoCoordinates 0-1
 @um [Optional] [Default= DEGD]

- | | | | | @geoRefSystem [Optional]
- | | | | | xGeoCoord 1-1
- | | | | | yGeoCoord 1-1
- | | | | | zGeoCoord 0-1
- | | | | | **attachment 0-1**
- | | | | | @uid [Optional]
- | | | | | fileName 0-1
- | | | | | @numberingOrg [Optional]
- | | | | | binaryObject 0-1
- | | | | | @format [Optional]
- | | | | | @mime [Optional]
- | | | | | @encoding [Optional]
- | | | | | @characterSet [Optional]
- | | | | | **externalReference 0-99**
- | | | | | uri 1-1
- | | | | | @isURL [Optional] [Default= true]
- | | | | | mimeTypeCode 0-1
- | | | | | formatCode 0-1
- | | | | | encodingCode 0-1
- | | | | | characterSetCode 0-1
- | | | | | hashFootprint 0-1
- | | | | | @schemeID [Optional]
- | | | | | @hashMethod [Required]
- | | | | | **blockChainReference 0-9**
- | | | | | uri 1-1
- | | | | | @isURL [Optional] [Default= true]
- | | | | | transactionReceipt 1-9
- | | | | | note 0-99
- | | | | | @numberingOrg [Optional]
- | | | | | @codeList [Optional]
- | | | | | @noteLabel [Optional]
- | | | | | validityStart 0-1
- | | | | | @dateForm [Optional]
- | | | | | validityEnd 0-1
- | | | | | @dateForm [Optional]
- | | | | | validityExtensionDate 0-1
- | | | | | @dateForm [Optional]
- | | | | | objectTypeCode 0-1
- | | | | | qty 0-2
- | | | | | @um [Required]
- | | | | | **supplier 0-9**
- | | | | | @logo [Optional]
- | | | | | @sender [Optional]
- | | | | | id 1-1
- | | | | | @numberingOrg [Optional]
- | | | | | additionalIdentifier 0-9
- | | | | | @numberingOrg [Optional]
- | | | | | @idQualifier [Optional]
- | | | | | legalName 0-1
- | | | | | dept 0-1
- | | | | | subDept 0-1
- | | | | | person 0-1
- | | | | | @email [Optional]
- | | | | | @phone [Optional]
- | | | | | @fax [Optional]
- | | | | | street 0-1
- | | | | | city 0-1
- | | | | | subCountry 0-1
- | | | | | country 0-1
- | | | | | postCode 0-1
- | | | | | **geoCoordinates 0-1**
- | | | | | @um [Optional] [Default= DEGD]
- | | | | | @geoRefSystem [Optional]
- | | | | | xGeoCoord 1-1
- | | | | | yGeoCoord 1-1
- | | | | | zGeoCoord 0-1

| productCompos 1-1

| percCompos 1-99
| @fibre [Required]
| @materialSource [Optional]
| @recyclingProcessMethod [Optional]
| @percSourcesRenewable [Optional]
| @validationMethod [Optional]
| @recyclingProcessEfficiency [Optional]

certificate 0-9

| @docStatusCode [Required]
| @docValidity [Required]
| docID 1-1
| | @numberingOrg [Optional]
| certificateID 1-1
| | @schemeID [Optional]
| certificationStandardName 1-1
| | @standardOwner [Required]
| docDate 1-1
| | @dateForm [Optional]
| title 0-unbounded
| | @ln [Optional]
| description 0-unbounded
| | @ln [Optional]
| validityStart 0-1
| | @dateForm [Optional]
| validityEnd 0-1
| | @dateForm [Optional]
| validityExtensionDate 0-1
| | @dateForm [Optional]
| sustainabilityCharacteristicText 0-99
| | @ln [Optional]

issuerParty 1-1

| id 0-1
| | @numberingOrg [Optional]
| legalName 0-1
| dept 0-1
| subDept 0-1
| person 0-1
| | @email [Optional]
| | @phone [Optional]
| | @fax [Optional]
| street 0-1
| city 0-1
| subCountry 0-1
| country 0-1
| postCode 0-1
| **geoCoordinates 0-1**
| | @um [Optional] [Default= DEGD]
| | @geoRefSystem [Optional]
| | | xGeoCoord 1-1
| | | yGeoCoord 1-1
| | | zGeoCoord 0-1
| issuerAccreditationInfo 0-1

certifiedParty 1-1

| id 0-1
| | @numberingOrg [Optional]
| legalName 0-1
| dept 0-1
| subDept 0-1
| person 0-1
| | @email [Optional]
| | @phone [Optional]
| | @fax [Optional]
| street 0-1
| city 0-1
| subCountry 0-1
| country 0-1
| postCode 0-1

```

| | | geoCoordinates 0-1
| | | @um [Optional] [Default= DEGD]
| | | @geoRefSystem [Optional]
| | | | xGeoCoord 1-1
| | | | yGeoCoord 1-1
| | | | zGeoCoord 0-1
| | | certifiedEntity 0-unbounded
| | | | entityID 1-3
| | | | @schemeID [Required]
| | | | entityTypeCode 1-1
| | | | description 0-9
| | | | @ln [Optional]
| | | attachment 0-1
| | | @uid [Optional]
| | | | fileName 0-1
| | | | @numberingOrg [Optional]
| | | | binaryObject 0-1
| | | | @format [Optional]
| | | | @mime [Optional]
| | | | @encoding [Optional]
| | | | @characterSet [Optional]
| | | | externalReference 0-99
| | | | | uri 1-1
| | | | | @isURL [Optional] [Default= true]
| | | | | mimeTypeCode 0-1
| | | | | formatCode 0-1
| | | | | encodingCode 0-1
| | | | | characterSetCode 0-1
| | | | | hashFootprint 0-1
| | | | | @schemeID [Optional]
| | | | | @hashMethod [Required]
| | | | | blockChainReference 0-9
| | | | | | uri 1-1
| | | | | | @isURL [Optional] [Default= true]
| | | | | | transactionReceipt 1-9
| | | | note 0-99
| | | | @numberingOrg [Optional]
| | | | @codeList [Optional]
| | | | @noteLabel [Optional]
| | | selfAssertion 0-9
| | | @disclosureLevel [Optional]
| | | @docStatusCode [Optional]
| | | | sustainabilityCharacteristicText 0-99
| | | | @ln [Optional]
| | | | assertionCategory 1-1
| | | | description 1-99
| | | | @ln [Optional]
| | | | issuerParty 1-1
| | | | | id 0-1
| | | | | @numberingOrg [Optional]
| | | | | legalName 0-1
| | | | | dept 0-1
| | | | | subDept 0-1
| | | | | person 0-1
| | | | | @email [Optional]
| | | | | @phone [Optional]
| | | | | @fax [Optional]
| | | | | street 0-1
| | | | | city 0-1
| | | | | subCountry 0-1
| | | | | country 0-1
| | | | | postCode 0-1
| | | | | geoCoordinates 0-1
| | | | | @um [Optional] [Default= DEGD]
| | | | | @geoRefSystem [Optional]
| | | | | | xGeoCoord 1-1
| | | | | | yGeoCoord 1-1

```



```

| | | zGeoCoord 0-1
| | issuerAccreditationInfo 0-1
| selfAssertionEntity 0-unbounded
| | entityID 1-3
| | | @schemeID [Required]
| | | entityTypeCode 1-1
| | | description 0-9
| | | @ln [Optional]
| externalRefDoc 0-99
| | docID 1-1
| | | @numberingOrg [Optional]
| | | docDate 0-1
| | | | @dateForm [Optional]
| | | title 0-unbounded
| | | | @ln [Optional]
| | | description 0-unbounded
| | | | @ln [Optional]
| | | validityStart 0-1
| | | | @dateForm [Optional]
| | | validityEnd 0-1
| | | | @dateForm [Optional]
| | | documentType 0-1
| issuerParty 0-1
| | | id 0-1
| | | | @numberingOrg [Optional]
| | | | legalName 0-1
| | | | dept 0-1
| | | | subDept 0-1
| | | | person 0-1
| | | | | @email [Optional]
| | | | | @phone [Optional]
| | | | | @fax [Optional]
| | | | street 0-1
| | | | city 0-1
| | | | subCountry 0-1
| | | | country 0-1
| | | | postCode 0-1
| | | geoCoordinates 0-1
| | | | @um [Optional] [Default= DEGD]
| | | | @geoRefSystem [Optional]
| | | | | xGeoCoord 1-1
| | | | | yGeoCoord 1-1
| | | | | zGeoCoord 0-1
| | | issuerAccreditationInfo 0-1
| signatureInformation 0-1
| | signatureTypeCode 1-1
| | signatoryParty 0-unbounded
| | | id 0-1
| | | | @numberingOrg [Optional]
| | | | legalName 0-1
| | | | dept 0-1
| | | | subDept 0-1
| | | | person 0-1
| | | | | @email [Optional]
| | | | | @phone [Optional]
| | | | | @fax [Optional]
| | | | street 0-1
| | | | city 0-1
| | | | subCountry 0-1
| | | | country 0-1
| | | | postCode 0-1
| | | | geoCoordinates 0-1
| | | | | @um [Optional] [Default= DEGD]
| | | | | @geoRefSystem [Optional]
| | | | | | xGeoCoord 1-1
| | | | | | yGeoCoord 1-1
| | | | | | zGeoCoord 0-1
| attachment 0-1

```

- | | | @uid [Optional]
- | | | | fileName 0-1
- | | | | | @numberingOrg [Optional]
- | | | | binaryObject 0-1
- | | | | | @format [Optional]
- | | | | | @mime [Optional]
- | | | | | @encoding [Optional]
- | | | | | @characterSet [Optional]
- | | | | **externalReference 0-99**
- | | | | | uri 1-1
- | | | | | | @isURL [Optional] [Default= true]
- | | | | | | mimeTypeCode 0-1
- | | | | | | formatCode 0-1
- | | | | | | encodingCode 0-1
- | | | | | | characterSetCode 0-1
- | | | | | hashFootprint 0-1
- | | | | | | @schemeID [Optional]
- | | | | | | @hashMethod [Required]
- | | | | | **blockChainReference 0-9**
- | | | | | | uri 1-1
- | | | | | | | @isURL [Optional] [Default= true]
- | | | | | | transactionReceipt 1-9
- | | | | note 0-99
- | | | | | @numberingOrg [Optional]
- | | | | | | @codeList [Optional]
- | | | | | | @noteLabel [Optional]
- | | | validityStart 0-1
- | | | | @dateForm [Optional]
- | | | validityEnd 0-1
- | | | | @dateForm [Optional]
- | | | validityExtensionDate 0-1
- | | | | @dateForm [Optional]

assessmentStudyDocument 0-9

- | | | @disclosureLevel [Optional]
- | | | @docStatusCode [Optional]
- | | | @isStudyDataset [Required]
- | | | | docID 0-1
- | | | | | @numberingOrg [Optional]
- | | | | docDate 0-1
- | | | | | @dateForm [Optional]
- | | | | **ProductIdentification 0-99**
- | | | | | uniqueProductID 1-1
- | | | | | | @schemeID [Required]
- | | | | | | objectTypeCode 1-1
- | | | | | | description 0-9
- | | | | | | @ln [Optional]
- | | | | - choose -
- | | | | **rawCode 0-2**
- | | | | | @numberingOrg [Optional]
- | | | | | | art 1-1
- | | | | | | | @numberingOrg [Optional]
- | | | | | | | @codeList [Optional]
- | | | | | | | @listName [Optional]
- | | | | | | | @listVersion [Optional]
- | | | | | | color 0-1
- | | | | | | | @numberingOrg [Optional]
- | | | | | | | @codeList [Optional]
- | | | | | | | @listName [Optional]
- | | | | | | | @listVersion [Optional]
- | | | | | | added 0-9
- | | | | | | | @numberingOrg [Optional]
- | | | | | | | @addType [Optional]
- | | | | | | | description 0-unbounded
- | | | | | | | @ln [Optional]
- | | | | - or -
- | | | | **yarnCode 0-2**
- | | | | | @numberingOrg [Optional] [Default= CL]

```

| | | art 1-1
| | |   @numberingOrg [Optional]
| | |   @codeList [Optional]
| | |   @listName [Optional]
| | |   @listVersion [Optional]
| | | color 0-1
| | |   @numberingOrg [Optional]
| | |   @codeList [Optional]
| | |   @listName [Optional]
| | |   @listVersion [Optional]
| | | added 0-9
| | |   @numberingOrg [Optional]
| | |   @addType [Optional]
| | | description 0-unbounded
| | |   @ln [Optional]

```

- or -

```

| | | texCode 0-2
| | |   @numberingOrg [Optional]
| | |   art 1-1
| | |     @numberingOrg [Optional]
| | |     @codeList [Optional]
| | |     @listName [Optional]
| | |     @listVersion [Optional]
| | |   pattern 0-1
| | |     @numberingOrg [Optional]
| | |     @codeList [Optional]
| | |     @listName [Optional]
| | |     @listVersion [Optional]
| | |   color 0-1
| | |     @numberingOrg [Optional]
| | |     @codeList [Optional]
| | |     @listName [Optional]
| | |     @listVersion [Optional]
| | |   added 0-9
| | |     @numberingOrg [Optional]
| | |     @addType [Optional]
| | |   description 0-unbounded
| | |     @ln [Optional]

```

- or -

```

| | | acsCode 1-2
| | |   @numberingOrg [Optional]
| | |   art 1-1
| | |     @numberingOrg [Optional]
| | |     @codeList [Optional]
| | |     @listName [Optional]
| | |     @listVersion [Optional]
| | |   pattern 0-1
| | |     @numberingOrg [Optional]
| | |     @codeList [Optional]
| | |     @listName [Optional]
| | |     @listVersion [Optional]
| | |   color 0-1
| | |     @numberingOrg [Optional]
| | |     @codeList [Optional]
| | |     @listName [Optional]
| | |     @listVersion [Optional]
| | |   added 0-9
| | |     @numberingOrg [Optional]
| | |     @addType [Optional]
| | |   description 0-unbounded
| | |     @ln [Optional]

```

- or -

```

| | | garmentPartCode 0-2
| | |   @numberingOrg [Optional]
| | |   gPart 1-1
| | |   mod 1-1
| | |     @numberingOrg [Optional]
| | |     @codeList [Optional]

```

```

| | | @listName [Optional]
| | | @listVersion [Optional]
| | | fabric 0-1
| | | @numberingOrg [Optional]
| | | @codeList [Optional]
| | | @listName [Optional]
| | | @listVersion [Optional]
| | | color 0-1
| | | @numberingOrg [Optional]
| | | @codeList [Optional]
| | | @listName [Optional]
| | | @listVersion [Optional]
| | | added 0-19
| | | @numberingOrg [Optional]
| | | @addType [Optional]
| | | size 0-1
| | | @numberingOrg [Optional]
| | | @codeList [Optional]
| | | @listName [Optional]
| | | @listVersion [Optional]
| | | description 0-unbounded
| | | @ln [Optional]

```

- or -

```

| | | garmentCode 0-2
| | | @numberingOrg [Optional]
| | | - choose -

```

```

| | | garmentCodeB 1-1
| | | @numberingOrg [Optional]
| | | mod 1-1
| | | @numberingOrg [Optional]
| | | @codeList [Optional]
| | | @listName [Optional]
| | | @listVersion [Optional]
| | | fabric 0-1
| | | @numberingOrg [Optional]
| | | @codeList [Optional]
| | | @listName [Optional]
| | | @listVersion [Optional]
| | | color 0-1
| | | @numberingOrg [Optional]
| | | @codeList [Optional]
| | | @listName [Optional]
| | | @listVersion [Optional]
| | | garmentVariant 0-9
| | | variantType 1-1
| | | @numberingOrg [Optional]
| | | @codeList [Optional]
| | | @listName [Optional]
| | | @listVersion [Optional]
| | | variantCode 1-1
| | | @numberingOrg [Optional]
| | | @codeList [Optional]
| | | @listName [Optional]
| | | @listVersion [Optional]
| | | drop 0-1
| | | @numberingOrg [Optional]
| | | @codeList [Optional]
| | | @listName [Optional]
| | | @listVersion [Optional]
| | | size 0-1
| | | @numberingOrg [Optional]
| | | @codeList [Optional]
| | | @listName [Optional]
| | | @listVersion [Optional]
| | | artGroup 0-1
| | | @numberingOrg [Optional]
| | | @codeList [Optional]
| | | @listName [Optional]

```

```

| | | | @listVersion [Optional]
| | | | added 0-9
| | | | @numberingOrg [Optional]
| | | | @addType [Optional]
| | | | description 0-unbounded
| | | | @ln [Optional]
| | | | - or -
| | | | garmentCodeA 1-1
| | | | | art 1-1
| | | | | @numberingOrg [Optional]
| | | | | @codeList [Optional]
| | | | | @listName [Optional]
| | | | | @listVersion [Optional]
| | | | | description 0-unbounded
| | | | | @ln [Optional]
| | | | - end choose -
| | | | - end choose -
| | | | | note 0-99
| | | | | @numberingOrg [Optional]
| | | | | @codeList [Optional]
| | | | | @noteLabel [Optional]
| | | | year 0-1
| | | | title 0-unbounded
| | | | | @ln [Optional]
| | | | description 0-unbounded
| | | | | @ln [Optional]
| | | | publishableAbstract 0-99
| | | | | @ln [Optional]
| | | | author 0-1
| | | | | @email [Optional]
| | | | | @phone [Optional]
| | | | | @fax [Optional]
| | | | reviewerParty 0-9
| | | | | id 1-1
| | | | | | @numberingOrg [Optional]
| | | | | | legalName 0-1
| | | | | | dept 0-1
| | | | | | subDept 0-1
| | | | | | person 0-1
| | | | | | | @email [Optional]
| | | | | | | @phone [Optional]
| | | | | | | @fax [Optional]
| | | | | | street 0-1
| | | | | | city 0-1
| | | | | | subCountry 0-1
| | | | | | country 0-1
| | | | | | postCode 0-1
| | | | | geoCoordinates 0-1
| | | | | | @um [Optional] [Default= DEGD]
| | | | | | @geoRefSystem [Optional]
| | | | | | | xGeoCoord 1-1
| | | | | | | yGeoCoord 1-1
| | | | | | | zGeoCoord 0-1
| | | | reviewDate 0-1
| | | | | @dateForm [Optional]
| | | | issuerParty 0-1
| | | | | id 0-1
| | | | | | @numberingOrg [Optional]
| | | | | | legalName 0-1
| | | | | | dept 0-1
| | | | | | subDept 0-1
| | | | | | person 0-1
| | | | | | | @email [Optional]
| | | | | | | @phone [Optional]
| | | | | | | @fax [Optional]
| | | | | | street 0-1
| | | | | | city 0-1
| | | | | | subCountry 0-1

```

- | country 0-1
- | postCode 0-1
- | **geoCoordinates 0-1**
- | | @um [Optional] [Default= DEGD]
- | | @geoRefSystem [Optional]
- | | | xGeoCoord 1-1
- | | | yGeoCoord 1-1
- | | | zGeoCoord 0-1
- | issuerAccreditationInfo 0-1
- validityStart 0-1
- | @dateForm [Optional]
- validityEnd 0-1
- | @dateForm [Optional]
- | **signatureInformation 0-1**
- | | signatureTypeCode 1-1
- | | **signatoryParty 0-unbounded**
- | | | id 0-1
- | | | | @numberingOrg [Optional]
- | | | legalName 0-1
- | | | dept 0-1
- | | | subDept 0-1
- | | | person 0-1
- | | | | @email [Optional]
- | | | | @phone [Optional]
- | | | | @fax [Optional]
- | | | street 0-1
- | | | city 0-1
- | | | subCountry 0-1
- | | | country 0-1
- | | | postCode 0-1
- | | | **geoCoordinates 0-1**
- | | | | @um [Optional] [Default= DEGD]
- | | | | @geoRefSystem [Optional]
- | | | | | xGeoCoord 1-1
- | | | | | yGeoCoord 1-1
- | | | | | zGeoCoord 0-1
- | **attachment 0-1**
- | | @uid [Optional]
- | | fileName 0-1
- | | | @numberingOrg [Optional]
- | | binaryObject 0-1
- | | | @format [Optional]
- | | | @mime [Optional]
- | | | @encoding [Optional]
- | | | @characterSet [Optional]
- | | **externalReference 0-99**
- | | | uri 1-1
- | | | | @isURL [Optional] [Default= true]
- | | | mimeTypeCode 0-1
- | | | formatCode 0-1
- | | | encodingCode 0-1
- | | | characterSetCode 0-1
- | | hashFootprint 0-1
- | | | @schemeID [Optional]
- | | | @hashMethod [Required]
- | | | **blockChainReference 0-9**
- | | | | uri 1-1
- | | | | | @isURL [Optional] [Default= true]
- | | | transactionReceipt 1-9
- note 0-99
- | @numberingOrg [Optional]
- | @codeList [Optional]
- | @noteLabel [Optional]

| **billOfWaste 0-1**

- | | @limitedByDisclosureIndicator [Optional]
- | | @exhaustiveInformation [Required]
- | | @disclosureLevel [Optional]

```

| @storageAction [Required]
| | productReferenceQty 0-1
| | | @um [Required]
| | year 0-1
| | facilityLocation 0-1
| | | location 1-1
| | | | @LRI [Optional]
| | | street 0-1
| | | city 0-1
| | | subCountry 0-1
| | | country 0-1
| | | postCode 0-1
| | | geoCoordinates 0-1
| | | | @um [Optional] [Default= DEGD]
| | | | @geoRefSystem [Optional]
| | | | | xGeoCoord 1-1
| | | | | yGeoCoord 1-1
| | | | | zGeoCoord 0-1
| | wasteDescriptor 0-99
| | | @indirectIncluded [Required]
| | | | EWCWasteCode 1-1
| | | | wasteTypeCode 0-9
| | | | | @schemeID [Required]
| | | | description 0-99
| | | | | @ln [Optional]
| | | | declaredQty 0-1
| | | | | @um [Required]
| | | | | @validationMethod [Optional]
| | | | | @referenceYear [Optional]
| | | | productReferenceQty 0-1
| | | | | @um [Required]
| | | | routeLength 0-1
| | | | | @um [Required]
| | | | wasteFinalTreatmentType 0-9
| | | | | @part [Optional]
| | | | | @recyclingProcessEfficiency [Optional]
| | | | note 0-9
| | | | | @numberingOrg [Optional]
| | | | | @codeList [Optional]
| | | | | @noteLabel [Optional]
| | externalRefDoc 0-99
| | | docID 1-1
| | | | @numberingOrg [Optional]
| | | docDate 0-1
| | | | @dateForm [Optional]
| | | title 0-unbounded
| | | | @ln [Optional]
| | | description 0-unbounded
| | | | @ln [Optional]
| | | validityStart 0-1
| | | | @dateForm [Optional]
| | | validityEnd 0-1
| | | | @dateForm [Optional]
| | | documentType 0-1
| | | issuerParty 0-1
| | | | id 0-1
| | | | | @numberingOrg [Optional]
| | | | legalName 0-1
| | | | dept 0-1
| | | | subDept 0-1
| | | | person 0-1
| | | | | @email [Optional]
| | | | | @phone [Optional]
| | | | | @fax [Optional]
| | | | street 0-1
| | | | city 0-1
| | | | subCountry 0-1
| | | | country 0-1

```

```

| | | | postCode 0-1
| | | | geoCoordinates 0-1
| | | | @um [Optional] [Default= DEGD]
| | | | @geoRefSystem [Optional]
| | | | | xGeoCoord 1-1
| | | | | yGeoCoord 1-1
| | | | | zGeoCoord 0-1
| | | | issuerAccreditationInfo 0-1
| | | | signatureInformation 0-1
| | | | | signatureTypeCode 1-1
| | | | | signatoryParty 0-unbounded
| | | | | | id 0-1
| | | | | | @numberingOrg [Optional]
| | | | | | legalName 0-1
| | | | | | dept 0-1
| | | | | | subDept 0-1
| | | | | | person 0-1
| | | | | | @email [Optional]
| | | | | | @phone [Optional]
| | | | | | @fax [Optional]
| | | | | | street 0-1
| | | | | | city 0-1
| | | | | | subCountry 0-1
| | | | | | country 0-1
| | | | | | postCode 0-1
| | | | | | geoCoordinates 0-1
| | | | | | @um [Optional] [Default= DEGD]
| | | | | | @geoRefSystem [Optional]
| | | | | | | xGeoCoord 1-1
| | | | | | | yGeoCoord 1-1
| | | | | | | zGeoCoord 0-1
| | | | attachment 0-1
| | | | @uid [Optional]
| | | | | fileName 0-1
| | | | | @numberingOrg [Optional]
| | | | | binaryObject 0-1
| | | | | @format [Optional]
| | | | | @mime [Optional]
| | | | | @encoding [Optional]
| | | | | @characterSet [Optional]
| | | | | externalReference 0-99
| | | | | | uri 1-1
| | | | | | @isURL [Optional] [Default= true]
| | | | | | mimeTypeCode 0-1
| | | | | | formatCode 0-1
| | | | | | encodingCode 0-1
| | | | | | characterSetCode 0-1
| | | | | hashFootprint 0-1
| | | | | @schemeID [Optional]
| | | | | @hashMethod [Required]
| | | | | blockChainReference 0-9
| | | | | | uri 1-1
| | | | | | @isURL [Optional] [Default= true]
| | | | | transactionReceipt 1-9
| | | | note 0-99
| | | | @numberingOrg [Optional]
| | | | @codeList [Optional]
| | | | @noteLabel [Optional]
| | | | note 0-9
| | | | @numberingOrg [Optional]
| | | | @codeList [Optional]
| | | | @noteLabel [Optional]
| | | | expectedUsagePerformance 0-1
| | | | | averageWashingNumber 0-9
| | | | | @um [Required]
| | | | | @validationMethod [Optional]
| | | | | @referenceYear [Optional]

```


averageProductLifetime 0-9
 @um [Required]
 @validationMethod [Optional]
 @referenceYear [Optional]

averageReferenceProductLifeTime 0-9
 @um [Required]
 @validationMethod [Optional]
 @referenceYear [Optional]

externalRefDoc 0-99
 docID 1-1
 @numberingOrg [Optional]
 docDate 0-1
 @dateForm [Optional]
 title 0-unbounded
 @ln [Optional]
 description 0-unbounded
 @ln [Optional]
 validityStart 0-1
 @dateForm [Optional]
 validityEnd 0-1
 @dateForm [Optional]
 documentType 0-1

issuerParty 0-1
 id 0-1
 @numberingOrg [Optional]
 legalName 0-1
 dept 0-1
 subDept 0-1
 person 0-1
 @email [Optional]
 @phone [Optional]
 @fax [Optional]
 street 0-1
 city 0-1
 subCountry 0-1
 country 0-1
 postCode 0-1

geoCoordinates 0-1
 @um [Optional] [Default= DEGD]
 @geoRefSystem [Optional]
 xGeoCoord 1-1
 yGeoCoord 1-1
 zGeoCoord 0-1

issuerAccreditationInfo 0-1

signatureInformation 0-1
 signatureTypeCode 1-1

signatoryParty 0-unbounded
 id 0-1
 @numberingOrg [Optional]
 legalName 0-1
 dept 0-1
 subDept 0-1
 person 0-1
 @email [Optional]
 @phone [Optional]
 @fax [Optional]
 street 0-1
 city 0-1
 subCountry 0-1
 country 0-1
 postCode 0-1

geoCoordinates 0-1
 @um [Optional] [Default= DEGD]
 @geoRefSystem [Optional]
 xGeoCoord 1-1
 yGeoCoord 1-1
 zGeoCoord 0-1

attachment 0-1

```

| | | @uid [Optional]
| | | | fileName 0-1
| | | | | @numberingOrg [Optional]
| | | | binaryObject 0-1
| | | | | @format [Optional]
| | | | | @mime [Optional]
| | | | | @encoding [Optional]
| | | | | @characterSet [Optional]
| | | | externalReference 0-99
| | | | | uri 1-1
| | | | | | @isURL [Optional] [Default= true]
| | | | | | mimeTypeCode 0-1
| | | | | | formatCode 0-1
| | | | | | encodingCode 0-1
| | | | | | characterSetCode 0-1
| | | | | hashFootprint 0-1
| | | | | | @schemeID [Optional]
| | | | | | @hashMethod [Required]
| | | | | blockChainReference 0-9
| | | | | | uri 1-1
| | | | | | | @isURL [Optional] [Default= true]
| | | | | | transactionReceipt 1-9
| | | note 0-99
| | | | @numberingOrg [Optional]
| | | | | @codeList [Optional]
| | | | | @noteLabel [Optional]
| | note 0-9
| | | @numberingOrg [Optional]
| | | | @codeList [Optional]
| | | | @noteLabel [Optional]

```

endOfLifePerformance 0-1

```

| | collectedFractionMassPercentage 0-9
| | | @um [Required]
| | | | @validationMethod [Optional]
| | | | @referenceYear [Optional]
| | fractionMassToCompostingPerc 0-9
| | | @um [Required]
| | | | @validationMethod [Optional]
| | | | @referenceYear [Optional]
| | | | @energyRecoveryEfficiency [Optional]
| | fractionMassToRecyclingPerc 0-9
| | | @um [Required]
| | | | @recyclingProcessMethod [Optional]
| | | | @validationMethod [Optional]
| | | | @referenceYear [Optional]
| | | | @recyclingProcessEfficiency [Optional]
| | fractionMassToReusePerc 0-9
| | | @um [Required]
| | | | @validationMethod [Optional]
| | | | @referenceYear [Optional]
| | externalRefDoc 0-99
| | | docID 1-1
| | | | @numberingOrg [Optional]
| | | | docDate 0-1
| | | | | @dateForm [Optional]
| | | | title 0-unbounded
| | | | | @ln [Optional]
| | | | description 0-unbounded
| | | | | @ln [Optional]
| | | | validityStart 0-1
| | | | | @dateForm [Optional]
| | | | validityEnd 0-1
| | | | | @dateForm [Optional]
| | | | documentType 0-1
| | | issuerParty 0-1
| | | | id 0-1
| | | | | @numberingOrg [Optional]

```

```

| legalName 0-1
| dept 0-1
| subDept 0-1
| person 0-1
| @email [Optional]
| @phone [Optional]
| @fax [Optional]
| street 0-1
| city 0-1
| subCountry 0-1
| country 0-1
| postCode 0-1
| geoCoordinates 0-1
| @um [Optional] [Default= DEGD]
| @geoRefSystem [Optional]
| | xGeoCoord 1-1
| | yGeoCoord 1-1
| | zGeoCoord 0-1
| issuerAccreditationInfo 0-1
| signatureInformation 0-1
| signatureTypeCode 1-1
| signatoryParty 0-unbounded
| | id 0-1
| | @numberingOrg [Optional]
| | legalName 0-1
| | dept 0-1
| | subDept 0-1
| | person 0-1
| | @email [Optional]
| | @phone [Optional]
| | @fax [Optional]
| | street 0-1
| | city 0-1
| | subCountry 0-1
| | country 0-1
| | postCode 0-1
| | geoCoordinates 0-1
| | @um [Optional] [Default= DEGD]
| | @geoRefSystem [Optional]
| | | xGeoCoord 1-1
| | | yGeoCoord 1-1
| | | zGeoCoord 0-1
| attachment 0-1
| @uid [Optional]
| | fileName 0-1
| | @numberingOrg [Optional]
| | binaryObject 0-1
| | @format [Optional]
| | @mime [Optional]
| | @encoding [Optional]
| | @characterSet [Optional]
| | externalReference 0-99
| | | uri 1-1
| | | @isURL [Optional] [Default= true]
| | | mimeTypeCode 0-1
| | | formatCode 0-1
| | | encodingCode 0-1
| | | characterSetCode 0-1
| | hashFootprint 0-1
| | @schemeID [Optional]
| | @hashMethod [Required]
| | blockChainReference 0-9
| | | uri 1-1
| | | @isURL [Optional] [Default= true]
| | | transactionReceipt 1-9
| note 0-99
| @numberingOrg [Optional]
| @codeList [Optional]

```

| | | @noteLabel [Optional]
| | note 0-9
| | @numberingOrg [Optional]
| | @codeList [Optional]
| | @noteLabel [Optional]

| note 0-9
| @numberingOrg [Optional]
| @codeList [Optional]
| @noteLabel [Optional]

2.2 Detailed description of document elements

Following tables show all elements (complex and simple) used in this document. Description includes: 1) element's information: xml tag, name, brief description, 2) data type and syntax constraints, 3) information about usage of the element in a particular position in the document: aggregation notes..

2.2.1 Complex elements (Aggregate Business Information Entities)

Complex elements are those elements whose content is composed of other elements (childs).Complex elements are alphabetically ordered.

<p>acsCode</p>	<p>full codification identifying an accessory product usually coupled with garment or other fashion product XPath MCIPreliminaryInformationSupply/ProductIdentification/acsCode: 1-2 - note for this position: <i>this element can have two instances only if the numbering organisations are different</i> XPath MCIPreliminaryInformationSupply/assessmentStudyDocument/ProductIdentification/acsCode: 1-2 - note for this position: <i>this element can have two instances only if the numbering organisations are different</i> XPath MCIPreliminaryInformationSupply/billOfComponents/productComponent/acsCode: 0-2 - note for this position: <i>this element can have two instances only if the numbering organisations are different</i></p>
<p>assessmentStudyDocument</p>	<p>resulting study document (e.g. an LCA study). It can be related to a component or a product. It can be a dataset (in any format) or a report according to isStudyDataset flag). In the case of PEF study, prefer PEFStudyDocument if possible. - base type: , XPath MCIPreliminaryInformationSupply/assessmentStudyDocument: 0-9 - note for this position: <i>any further useful documentation</i></p>
<p>attachment</p>	<p>an attached document. An attachment can refer to an external document or be included with the document being exchanged XPath MCIPreliminaryInformationSupply/billOfWaste/externalRefDoc/attachment: 0-1 - note for this position: <i>indicates where to find the document or contains it as a binary object (the second option is not recommended for practical reasons)</i> XPath MCIPreliminaryInformationSupply/billOfComponents/productComponent/certificate/attachment: 0-1 - note for this position: <i>indicates where to find the document or contains it as a binary object (the second option is not recommended for practical reasons)</i> XPath MCIPreliminaryInformationSupply/endOfLifePerformance/externalRefDoc/attachment: 0-1 - note for this position: <i>indicates where to find the document or contains it as a binary object (the second option is not recommended for practical reasons)</i> XPath MCIPreliminaryInformationSupply/selfAssertion/externalRefDoc/attachment: 0-1 - note for this position: <i>indicates where to find the document or contains it as a binary object (the second option is not recommended for practical reasons)</i> XPath MCIPreliminaryInformationSupply/expectedUsagePerformance/externalRefDoc/attachment: 0-1 - note for this position: <i>indicates where to find the document or contains it as a binary object (the second option is not recommended for practical reasons)</i> XPath MCIPreliminaryInformationSupply/billOfComponents/productComponent/selfAssertion/externalRefDoc/attachment: 0-1 - note for this position: <i>indicates where to find the document or contains it as a binary object (the second option is not recommended for practical reasons)</i> XPath MCIPreliminaryInformationSupply/assessmentStudyDocument/attachment: 0-1 - note for this position: <i>indicates where to find the document or contains it as a binary object (the second option is not recommended for practical reasons)</i> XPath MCIPreliminaryInformationSupply/certificate/attachment: 0-1</p>

	- note for this position: <i>indicates where to find the document or contains it as a binary object (the second option is not recommended for practical reasons)</i>
billOfComponents	bill of components used to create the product. XPath MCIPreliminaryInformationSupply/billOfComponents: 1-1 - note for this position: <i>mandatory to specify quantity (weight) related to final product reference quantity (productReferenceQty)</i>
billOfWaste	list of waste generated to make the product, excluding waste water, relating to quantities of the reference product or to yearly data of a facility/plant - base type: , XPath MCIPreliminaryInformationSupply/billOfWaste: 0-1 - note for this position: <i>pre-usage bill of waste (related to production). Mandatory to specify in wasteFinalTreatmentType the efficiency (in mass percentage) of the recycling process for the waste arising from production.</i>
blockChainReference	blockchain reference - base type: string, max length: 80,
certificate	Reference and details relating to a document containing a certification issued by a third party who is entitled to issue it - base type: , XPath MCIPreliminaryInformationSupply/billOfComponents/productComponent/certificate: 0-9 - note for this position: <i>scope certificate of the component</i>
certifiedEntity	The entity (organisation, process, product..) for which the certification is valid. - base type: ,
certifiedParty	identification and details of the party to whom the certificate has been issued - base type: Nad,
endOfLifePerformance	product end of life performance
expectedUsagePerformance	expected performance in the product usage.
externalRefDoc	external document, used to refer generic office documents (like pdf, docx, xls, for example shop window instructions) - base type: , XPath MCIPreliminaryInformationSupply/endOfLifePerformance/externalRefDoc: 0-99 - note for this position: <i>any supporting documentation</i> XPath MCIPreliminaryInformationSupply/selfAssertion/externalRefDoc: 0-99 - note for this position: <i>Any type of supporting documentation</i> XPath MCIPreliminaryInformationSupply/expectedUsagePerformance/externalRefDoc: 0-99 - note for this position: <i>any supporting documentation</i> XPath MCIPreliminaryInformationSupply/billOfComponents/productComponent/selfAssertion/externalRefDoc: 0-99 - note for this position: <i>Any type of supporting documentation</i> XPath MCIPreliminaryInformationSupply/billOfWaste/externalRefDoc: 0-99 - note for this position: <i>any supporting information</i>
externalReference	details about an external object, such as a document stored at a remote location
facilityLocation	data relating to a place of a facility (indicate at least element location or address, city and country) - base type: , XPath MCIPreliminaryInformationSupply/billOfWaste/facilityLocation: 0-1 Best Practice - note for this position: <i>when filled indicates that collected figures are related to a specific facility.</i>
garmentCode	codification of the garment product XPath MCIPreliminaryInformationSupply/billOfComponents/productComponent/garmentCode: 0-2 - note for this position: <i>this element can have two instances only if the numbering organisations are different</i> XPath MCIPreliminaryInformationSupply/ProductIdentification/garmentCode: 0-2 - note for this position: <i>this element can have two instances only if the numbering organisations are different</i> XPath

	<p>MCIPreliminaryInformationSupply/assessmentStudyDocument/ProductIdentification/garmentCode: 0-2</p> <p>- note for this position: <i>this element can have two instances only if the numbering organisations are different</i></p>
garmentCodeA	<p>codification of the garment product- type A</p> <p>XPath MCIPreliminaryInformationSupply/ProductIdentification/garmentCode/garmentCodeA: 1-1</p> <p>- note for this position: <i>here the barcode EAN-13 or EAN-8 should be specified</i></p> <p>XPath MCIPreliminaryInformationSupply/assessmentStudyDocument/ProductIdentification/garmentCode/garmentCodeA: 1-1</p> <p>- note for this position: <i>here the barcode EAN-13 or EAN-8 should be specified</i></p> <p>XPath MCIPreliminaryInformationSupply/billOfComponents/productComponent/garmentCode/garmentCodeA: 1-1</p> <p>- note for this position: <i>here the barcode EAN-13 or EAN-8 should be specified</i></p>
garmentCodeB	<p>codification of the garment product - type B</p>
garmentPartCode	<p>codification of the component or part of a fashion article</p> <p>XPath MCIPreliminaryInformationSupply/assessmentStudyDocument/ProductIdentification/garmentPartCode: 0-2</p> <p>- note for this position: <i>this element can have two instances only if the numbering organisations are different</i></p> <p>XPath MCIPreliminaryInformationSupply/ProductIdentification/garmentPartCode: 0-2</p> <p>- note for this position: <i>this element can have two instances only if the numbering organisations are different</i></p> <p>XPath MCIPreliminaryInformationSupply/billOfComponents/productComponent/garmentPartCode: 0-2</p> <p>- note for this position: <i>this element can have two instances only if the numbering organisations are different</i></p>
garmentVariant	<p>garment product variant</p>
geoCoordinates	<p>geographical coordinates</p>
issuerParty	<p>Details of the party that issued the document.</p> <p>- base type: Nad,</p> <p>XPath MCIPreliminaryInformationSupply/selfAssertion/issuerParty: 1-1</p> <p>- note for this position: <i>Indicate at least the legalname</i></p> <p>XPath MCIPreliminaryInformationSupply/billOfComponents/productComponent/selfAssertion/issuerParty: 1-1</p> <p>- note for this position: <i>Indicate at least the legalname</i></p>
platformServiceReference	<p>service instruction and reference</p> <p>- base type: string,</p>
productComponent	<p>descriptor of one of the elements used to create the product, it indicates the codes of the component, the quantity for final product unit, supplier and any documentation</p>
productCompos	<p>Quantitative composition of a product</p> <p>XPath MCIPreliminaryInformationSupply/productCompos: 1-1</p> <p>- note for this position: <i>mandatory to specify the feedstock share from reused sources, from recycled sources (and related efficiency of the recycling process) and from renewable sources</i></p>
ProductIdentification	<p>Identifies the product whose transparency and sustainability characteristics are reported</p> <p>XPath MCIPreliminaryInformationSupply/assessmentStudyDocument/ProductIdentification: 0-99</p> <p>- note for this position: <i>indicate the product(s) to whom this study is related</i></p> <p>XPath MCIPreliminaryInformationSupply/ProductIdentification: 1-1</p> <p>- note for this position: <i>indicate object type code</i></p>
rawCode	<p>full codification of a raw material</p> <p>XPath MCIPreliminaryInformationSupply/billOfComponents/productComponent/rawCode: 0-2</p>

	<p>- note for this position: <i>this element can have two instances only if the numbering organisations are different</i> XPath MCIPreliminaryInformationSupply/assessmentStudyDocument/ProductIdentification/rawCode: 0-2</p> <p>- note for this position: <i>this element can have two instances only if the numbering organisations are different</i> XPath MCIPreliminaryInformationSupply/ProductIdentification/rawCode: 0-2</p> <p>- note for this position: <i>this element can have two instances only if the numbering organisations are different</i></p>
receiverParty	<p>Details of the party receiving the document. - base type: Nad,</p>
refDoc	<p>identification of a document and of an item thereof, to which the message makes reference</p>
reviewerParty	<p>Details of the party that reviewed the conformance of the adopted methodology. - base type: Nad,</p>
selfAssertion	<p>A self declared statement that issuer is able to support with detailed descriptions or documentation. It might comply with standards about assertions (it is the case for example of ISO14021 for environmental assertions).</p>
selfAssertionEntity	<p>The entity (organisation, process, product..) referred by the self assertion - base type: ,</p>
senderParty	<p>Details of the party sending the document. - base type: Nad,</p>
signatoryParty	<p>Details of the party that signed the document. - base type: Nad,</p>
signatureInformation	<p>information about the document signature</p>
SRVheader	<p>header of documents supporting ePlatform services</p>
supplier	<p>details of the Supplier (party that supplies the good or service that is object of the current collaborative process) - base type: Nad, XPath MCIPreliminaryInformationSupply/billOfComponents/productComponent/supplier: 0-9 - note for this position: <i>it is the supplier of the entire component when internallyPerformed=FALSE</i></p>
texCode	<p>full codification of the textile product XPath MCIPreliminaryInformationSupply/billOfComponents/productComponent/texCode: 0-2 - note for this position: <i>this element can have two instances only if the numbering organisations are different</i> XPath MCIPreliminaryInformationSupply/assessmentStudyDocument/ProductIdentification/texCode: 0-2 - note for this position: <i>this element can have two instances only if the numbering organisations are different</i> XPath MCIPreliminaryInformationSupply/ProductIdentification/texCode: 0-2 - note for this position: <i>this element can have two instances only if the numbering organisations are different</i></p>
wasteDescriptor	<p>describes a type of waste generated by the activities to which it is associated and possibly its quantity in relation to a reference quantity of product</p>
yarnCode	<p>full codification of a yarn product XPath MCIPreliminaryInformationSupply/assessmentStudyDocument/ProductIdentification/yarnCode: 0-2 - note for this position: <i>this element can have two instances only if the numbering organisations are different</i> XPath MCIPreliminaryInformationSupply/billOfComponents/</p>

	<p>productComponent/yarnCode: 0-2</p> <p>- note for this position: <i>this element can have two instances only if the numbering organisations are different</i></p> <p>XPath</p> <p>MCIPreliminaryInformationSupply/ProductIdentification/yarnCode: 0-2</p> <p>- note for this position: <i>this element can have two instances only if the numbering organisations are different</i></p>
--	--

2.2.2 Simple elements (Basic Business Information Entities)

Simple elements are those elements whose content is characterized by a data type plus a domain of possible values. Simple elements are alphabetically ordered.

added	<p>additional code of the product (complementing the formers)</p> <p>- base type: string, max length: 80,</p> <p>XPath</p> <p>MCIPreliminaryInformationSupply/ProductIdentification/acsCode/added: 0-9</p> <p>- note for this position: <i>here an additional codification (see table T44) can be specified</i></p> <p>XPath</p> <p>MCIPreliminaryInformationSupply/assessmentStudyDocument/ProductIdentification/yarnCode/added: 0-9</p> <p>- note for this position: <i>here an additional codification (see table T44) can be specified</i></p> <p>XPath</p> <p>MCIPreliminaryInformationSupply/ProductIdentification/yarnCode/added: 0-9</p> <p>- note for this position: <i>here an additional codification (see table T44) can be specified</i></p> <p>XPath</p> <p>MCIPreliminaryInformationSupply/assessmentStudyDocument/ProductIdentification/texCode/added: 0-9</p> <p>- note for this position: <i>here an additional codification (see table T44) can be specified</i></p> <p>XPath MCIPreliminaryInformationSupply/billOfComponents/productComponent/texCode/added: 0-9</p> <p>- note for this position: <i>here an additional codification (see table T44) can be specified</i></p> <p>XPath MCIPreliminaryInformationSupply/billOfComponents/productComponent/acsCode/added: 0-9</p> <p>- note for this position: <i>here an additional codification (see table T44) can be specified</i></p> <p>XPath MCIPreliminaryInformationSupply/billOfComponents/productComponent/yarnCode/added: 0-9</p> <p>- note for this position: <i>here an additional codification (see table T44) can be specified</i></p> <p>XPath</p> <p>MCIPreliminaryInformationSupply/assessmentStudyDocument/ProductIdentification/acsCode/added: 0-9</p> <p>- note for this position: <i>here an additional codification (see table T44) can be specified</i></p> <p>XPath</p> <p>MCIPreliminaryInformationSupply/ProductIdentification/texCode/added: 0-9</p> <p>- note for this position: <i>here an additional codification (see table T44) can be specified</i></p>
additionalIdentifier	<p>additional identification code of a Party, for example customs registries or others</p> <p>- base type: string, max length: 15,</p> <p>XPath MCIPreliminaryInformationSupply/billOfComponents/productComponent/supplier/additionalIdentifier: 0-9</p> <p>- note for this position: <i>identifiers for example for exports, such as MID (Manufacturer Identification Code), REX (identifier in EU Registered Exporter system)</i></p>
@addType	<p>qualifier of the additional coding of a product</p> <p>- base type: string, cod. table: T44</p> <p>http://www.ebiz.enea.it/moda-ml/repository/codelist/draft/gc_T44.xml</p> <p>XPath MCIPreliminaryInformationSupply/billOfComponents/productComponent/acsCode/added/@addType: [Optional]</p> <p>- note for this position: <i>addType allows the clarification of the meaning of the added element content; it is strongly suggested to use it always.</i></p> <p>XPath</p> <p>MCIPreliminaryInformationSupply/assessmentStudyDocument/ProductIdentification/garmentPartCode/added/@addType: [Optional]</p> <p>- note for this position: <i>addType allows the clarification of the meaning of the added element content; it is strongly suggested to use it always.</i></p> <p>XPath MCIPreliminaryInformationSupply/billOfComponents/productComponent/garmentCode/garmentCodeB/added/@addType: [Optional]</p>

	<p>- note for this position: <i>addType</i> allows the clarification of the meaning of the added element content; it is strongly suggested to use it always. XPath MCIPreliminaryInformationSupply/billOfComponents/productComponent/garmentPartCode/added/@addType: [Optional]</p> <p>- note for this position: <i>addType</i> allows the clarification of the meaning of the added element content; it is strongly suggested to use it always. XPath MCIPreliminaryInformationSupply/assessmentStudyDocument/ProductIdentification/garmentCode/garmentCodeB/added/@addType: [Optional]</p> <p>- note for this position: <i>addType</i> allows the clarification of the meaning of the added element content; it is strongly suggested to use it always. XPath MCIPreliminaryInformationSupply/assessmentStudyDocument/ProductIdentification/acsCode/added/@addType: [Optional]</p> <p>- note for this position: <i>addType</i> allows the clarification of the meaning of the added element content; it is strongly suggested to use it always. XPath MCIPreliminaryInformationSupply/billOfComponents/productComponent/texCode/added/@addType: [Optional]</p> <p>- note for this position: <i>addType</i> allows the clarification of the meaning of the added element content; it is strongly suggested to use it always. XPath MCIPreliminaryInformationSupply/billOfComponents/productComponent/yarnCode/added/@addType: [Optional]</p> <p>- note for this position: <i>addType</i> allows the clarification of the meaning of the added element content; it is strongly suggested to use it always. XPath MCIPreliminaryInformationSupply/assessmentStudyDocument/ProductIdentification/texCode/added/@addType: [Optional]</p> <p>- note for this position: <i>addType</i> allows the clarification of the meaning of the added element content; it is strongly suggested to use it always. XPath MCIPreliminaryInformationSupply/assessmentStudyDocument/ProductIdentification/rawCode/added/@addType: [Optional]</p> <p>- note for this position: <i>addType</i> allows the clarification of the meaning of the added element content; it is strongly suggested to use it always. XPath MCIPreliminaryInformationSupply/billOfComponents/productComponent/rawCode/added/@addType: [Optional]</p> <p>- note for this position: <i>addType</i> allows the clarification of the meaning of the added element content; it is strongly suggested to use it always. XPath MCIPreliminaryInformationSupply/assessmentStudyDocument/ProductIdentification/yarnCode/added/@addType: [Optional]</p> <p>- note for this position: <i>addType</i> allows the clarification of the meaning of the added element content; it is strongly suggested to use it always. XPath MCIPreliminaryInformationSupply/ProductIdentification/garmentCode/garmentCodeB/added/@addType: [Optional]</p> <p>- note for this position: <i>addType</i> allows the clarification of the meaning of the added element content; it is strongly suggested to use it always. XPath MCIPreliminaryInformationSupply/ProductIdentification/garmentPartCode/added/@addType: [Optional]</p> <p>- note for this position: <i>addType</i> allows the clarification of the meaning of the added element content; it is strongly suggested to use it always. XPath MCIPreliminaryInformationSupply/ProductIdentification/acsCode/added/@addType: [Optional]</p> <p>- note for this position: <i>addType</i> allows the clarification of the meaning of the added element content; it is strongly suggested to use it always. XPath MCIPreliminaryInformationSupply/ProductIdentification/yarnCode/added/@addType: [Optional]</p> <p>- note for this position: <i>addType</i> allows the clarification of the meaning of the added element content; it is strongly suggested to use it always. XPath MCIPreliminaryInformationSupply/ProductIdentification/rawCode/added/@addType: [Optional]</p>
--	--

	<p>MCIPreliminaryInformationSupply/ProductIdentification/texCode/added/@addType: [Optional]</p> <p>- note for this position: <i>addType</i> allows the clarification of the meaning of the added element content; it is strongly suggested to use it always.</p>
art	<p>article number of the product</p> <p>- base type: string, max length: 80,</p> <p>XPath MCIPreliminaryInformationSupply/billOfComponents/productComponent/texCode/art: 1-1</p> <p>- note for this position: <i>can be used either for the base-article (excluding pattern/colour) or for the SKU</i></p> <p>XPath MCIPreliminaryInformationSupply/assessmentStudyDocument/ProductIdentification/texCode/art: 1-1</p> <p>- note for this position: <i>can be used either for the base-article (excluding pattern/colour) or for the SKU</i></p> <p>XPath MCIPreliminaryInformationSupply/ProductIdentification/texCode/art: 1-1</p> <p>- note for this position: <i>can be used either for the base-article (excluding pattern/colour) or for the SKU</i></p>
artGroup	<p>code identifying a class of products</p> <p>- base type: string, max length: 40,</p>
assertionCategory	<p>assertion category, indicates the object of the assertion</p> <p>- base type: string, cod. table: NT323</p> <p>http://www.ebiz.enea.it/moda-ml/repository/codelist/draft/gc_NT323.xml</p>
author	<p>textual indication of the authors, one or more</p> <p>- base type: string, max length: 40,</p>
averageProductLifetime	<p>average product life time (in usage phase).</p> <p>- base type: , min inclusive: 0,</p> <p>XPath MCIPreliminaryInformationSupply/expectedUsagePerformance/averageProductLifetime: 0-9</p> <p>- note for this position: <i>indicate multiple values only if originating from different evaluation methods (different values of validationMethod).</i></p>
averageReferenceProductLifetime	<p>average life time (in usage phase) of a reference product in the market, different from the present product.</p> <p>- base type: , min inclusive: 0,</p> <p>XPath MCIPreliminaryInformationSupply/expectedUsagePerformance/averageReferenceProductLifeTime: 0-9</p> <p>- note for this position: <i>indicate multiple values only if originating from different evaluation methods (different values of validationMethod or declare in note).</i></p>
averageWashingNumber	<p>expected average washing number during the expected life of the product</p> <p>- base type: , min inclusive: 0, fraction digits: 0,</p> <p>XPath MCIPreliminaryInformationSupply/expectedUsagePerformance/averageWashingNumber: 0-9</p> <p>- note for this position: <i>indicate multiple values only if originating from different evaluation methods (different values of validationMethod).</i></p>
binaryObject	<p>a binary large object containing an attached document, Coding 'base64Binary' is recommended.</p> <p>- base type: base64Binary,</p>
certificateID	<p>Identifier of the certificate assigned by the issuer</p> <p>- base type: string,</p>
certificationStandardName	<p>it indicates the specification that has been used as normative basis of the certificate. (examples: 'GRS-global recycling standard' or 'Standard 100 OEKO-TEX')</p> <p>- base type: string,</p>
@characterSet	<p>the character set of the binary object (examples UTF-8, UTF-16, Windows-1252, ISO-8859-7,..)</p> <p>- base type: normalizedString,</p>

characterSetCode	the character set of an external document (examples UTF-8, UTF-16, Windows-1252, ISO-8859-7,..) - base type: normalizedString,
city	name of the city (town, village) - base type: string, max length: 40,
@codeList	<p>it specifies the URL where the list of codes used to make an instance of the element can be found - base type: string, max length: 255, XPath MCIPreliminaryInformationSupply/assessmentStudyDocument/ProductIdentification/rawCode/color/@codeList: [Optional] - note for this position: <i>this attribute should be used either single or coupled with "listName" and "listVersion"</i></p> <p>XPath MCIPreliminaryInformationSupply/ProductIdentification/yarnCode/color/@codeList: [Optional] - note for this position: <i>this attribute should be used either single or coupled with "listName" and "listVersion"</i></p> <p>XPath MCIPreliminaryInformationSupply/assessmentStudyDocument/ProductIdentification/rawCode/art/@codeList: [Optional] - note for this position: <i>at least one out of this attribute and "numberingOrg" should be set</i></p> <p>XPath MCIPreliminaryInformationSupply/billOfComponents/productComponent/acsCode/color/@codeList: [Optional] - note for this position: <i>this attribute should be used either single or coupled with "listName" and "listVersion"</i></p> <p>XPath MCIPreliminaryInformationSupply/billOfComponents/productComponent/texCode/color/@codeList: [Optional] - note for this position: <i>this attribute should be used either single or coupled with "listName" and "listVersion"</i></p> <p>XPath MCIPreliminaryInformationSupply/billOfWaste/note/@codeList: [Optional] - note for this position: <i>must be used to provide (URL) the list of codes used in "noteLabel"</i></p> <p>XPath MCIPreliminaryInformationSupply/ProductIdentification/texCode/art/@codeList: [Optional] - note for this position: <i>at least one out of this attribute and "numberingOrg" should be set</i></p> <p>XPath MCIPreliminaryInformationSupply/billOfComponents/productComponent/texCode/pattern/@codeList: [Optional] - note for this position: <i>at least one out of this attribute and "numberingOrg" should be set</i></p> <p>XPath MCIPreliminaryInformationSupply/assessmentStudyDocument/ProductIdentification/texCode/pattern/@codeList: [Optional] - note for this position: <i>at least one out of this attribute and "numberingOrg" should be set</i></p> <p>XPath MCIPreliminaryInformationSupply/assessmentStudyDocument/ProductIdentification/texCode/art/@codeList: [Optional] - note for this position: <i>at least one out of this attribute and "numberingOrg" should be set</i></p> <p>XPath MCIPreliminaryInformationSupply/ProductIdentification/garmentCode/garmentCodeB/fabric/@codeList: [Optional] - note for this position: <i>at least one out of this attribute and "numberingOrg" should be set</i></p> <p>XPath MCIPreliminaryInformationSupply/billOfWaste/wasteDescriptor/note/@codeList: [Optional] - note for this position: <i>must be used to provide (URL) the list of codes used in "noteLabel"</i></p> <p>XPath MCIPreliminaryInformationSupply/billOfComponents/productComponent/acsCode/pattern/@codeList: [Optional] - note for this position: <i>at least one out of this attribute and "numberingOrg" should be set</i></p> <p>XPath MCIPreliminaryInformationSupply/ProductIdentification/garmentPartCode/fabri</p>

	<p>c/@codeList: [Optional] - note for this position: <i>at least one out of this attribute and "numberingOrg" should be set</i> XPath MCIPreliminaryInformationSupply/assessmentStudyDocument/ProductIdentification/yarnCode/color/@codeList: [Optional] - note for this position: <i>this attribute should be used either single or coupled with "listName" and "listVersion"</i> XPath MCIPreliminaryInformationSupply/billOfComponents/productComponent/acsCode/art/@codeList: [Optional] - note for this position: <i>at least one out of this attribute and "numberingOrg" should be set</i> XPath MCIPreliminaryInformationSupply/assessmentStudyDocument/ProductIdentification/yarnCode/art/@codeList: [Optional] - note for this position: <i>at least one out of this attribute and "numberingOrg" should be set</i> XPath MCIPreliminaryInformationSupply/billOfComponents/productComponent/garmentCode/garmentCodeB/artGroup/@codeList: [Optional] - note for this position: <i>at least one out of this attribute and "numberingOrg" should be set</i> XPath MCIPreliminaryInformationSupply/SRVheader/platformServiceReference/serviceRequestedAction/@codeList: [Optional] - note for this position: <i>Insert URL codelist of the platform services actions available.</i> XPath MCIPreliminaryInformationSupply/billOfComponents/productComponent/garmentCode/garmentCodeA/art/@codeList: [Optional] - note for this position: <i>at least one out of this attribute and "numberingOrg" should be set</i> XPath MCIPreliminaryInformationSupply/endOfLifePerformance/externalRefDoc/note/@codeList: [Optional] - note for this position: <i>must be used to provide (URL) the list of codes used in "noteLabel"</i> XPath MCIPreliminaryInformationSupply/ProductIdentification/garmentPartCode/color/@codeList: [Optional] - note for this position: <i>this attribute should be used either single or coupled with "listName" and "listVersion"</i> XPath MCIPreliminaryInformationSupply/expectedUsagePerformance/note/@codeList: [Optional] - note for this position: <i>must be used to provide (URL) the list of codes used in "noteLabel"</i> XPath MCIPreliminaryInformationSupply/expectedUsagePerformance/externalRefDoc/note/@codeList: [Optional] - note for this position: <i>must be used to provide (URL) the list of codes used in "noteLabel"</i> XPath MCIPreliminaryInformationSupply/billOfComponents/productComponent/refDoc/season/@codeList: [Optional] - note for this position: <i>this attribute should be used either single or coupled with "listName" and "listVersion"</i> XPath MCIPreliminaryInformationSupply/certificate/note/@codeList: [Optional] - note for this position: <i>must be used to provide (URL) the list of codes used in "noteLabel"</i> XPath MCIPreliminaryInformationSupply/assessmentStudyDocument/note/@codeList: [Optional] - note for this position: <i>must be used to provide (URL) the list of codes used in "noteLabel"</i> XPath MCIPreliminaryInformationSupply/SRVheader/platformServiceReference/platformServiceCode/@codeList: [Optional] - note for this position: <i>indicate the URL of the platform supplying the service</i> XPath MCIPreliminaryInformationSupply/billOfComponents/productComponent/garmentCode/garmentCodeB/garmentVariant/variantCode/@codeList: [Optional] - note for this position: <i>at least one out of this attribute and "numberingOrg" should be set</i> XPath MCIPreliminaryInformationSupply/selfAssertion/</p>
--	---

	<p style="text-align: center;">externalRefDoc/note/@codeList: [Optional]</p> <p>- note for this position: <i>must be used to provide (URL) the list of codes used in "noteLabel"</i></p> <p>XPath</p> <p style="text-align: center;">MCIPreliminaryInformationSupply/ProductIdentification/yarnCode/art/@codeList: [Optional]</p> <p>- note for this position: <i>at least one out of this attribute and "numberingOrg" should be set</i></p> <p>XPath</p> <p style="text-align: center;">MCIPreliminaryInformationSupply/ProductIdentification/garmentCode/garmentCodeB/mod/@codeList: [Optional]</p> <p>- note for this position: <i>at least one out of this attribute and "numberingOrg" should be set</i></p> <p>XPath MCIPreliminaryInformationSupply/billOfComponents/productComponent/garmentPartCode/mod/@codeList: [Optional]</p> <p>- note for this position: <i>at least one out of this attribute and "numberingOrg" should be set</i></p> <p>XPath MCIPreliminaryInformationSupply/billOfComponents/productComponent/garmentPartCode/fabric/@codeList: [Optional]</p> <p>- note for this position: <i>at least one out of this attribute and "numberingOrg" should be set</i></p> <p>XPath MCIPreliminaryInformationSupply/billOfComponents/productComponent/garmentPartCode/color/@codeList: [Optional]</p> <p>- note for this position: <i>this attribute should be used either single or coupled with "listName" and "listVersion"</i></p> <p>XPath MCIPreliminaryInformationSupply/billOfComponents/productComponent/garmentCode/garmentCodeB/color/@codeList: [Optional]</p> <p>- note for this position: <i>this attribute should be used either single or coupled with "listName" and "listVersion"</i></p> <p>XPath</p> <p style="text-align: center;">MCIPreliminaryInformationSupply/ProductIdentification/rawCode/art/@codeList: [Optional]</p> <p>- note for this position: <i>at least one out of this attribute and "numberingOrg" should be set</i></p> <p>XPath MCIPreliminaryInformationSupply/billOfComponents/productComponent/garmentCode/garmentCodeB/garmentVariant/variantType/@codeList: [Optional]</p> <p>- note for this position: <i>always at least one out of this attribute and "numberingOrg" should be set</i></p> <p>XPath MCIPreliminaryInformationSupply/billOfComponents/productComponent/garmentCode/garmentCodeB/mod/@codeList: [Optional]</p> <p>- note for this position: <i>at least one out of this attribute and "numberingOrg" should be set</i></p> <p>XPath</p> <p style="text-align: center;">MCIPreliminaryInformationSupply/ProductIdentification/rawCode/color/@codeList: [Optional]</p> <p>- note for this position: <i>this attribute should be used either single or coupled with "listName" and "listVersion"</i></p> <p>XPath MCIPreliminaryInformationSupply/billOfComponents/productComponent/garmentCode/garmentCodeB/fabric/@codeList: [Optional]</p> <p>- note for this position: <i>at least one out of this attribute and "numberingOrg" should be set</i></p> <p>XPath</p> <p style="text-align: center;">MCIPreliminaryInformationSupply/assessmentStudyDocument/ProductIdentification/garmentCode/garmentCodeB/fabric/@codeList: [Optional]</p> <p>- note for this position: <i>at least one out of this attribute and "numberingOrg" should be set</i></p> <p>XPath</p> <p style="text-align: center;">MCIPreliminaryInformationSupply/assessmentStudyDocument/ProductIdentification/garmentCode/garmentCodeB/mod/@codeList: [Optional]</p> <p>- note for this position: <i>at least one out of this attribute and "numberingOrg" should be set</i></p> <p>XPath</p> <p style="text-align: center;">MCIPreliminaryInformationSupply/ProductIdentification/acsCode/pattern/@codeList: [Optional]</p> <p>- note for this position: <i>at least one out of this attribute and "numberingOrg" should be set</i></p> <p>XPath</p> <p style="text-align: center;">MCIPreliminaryInformationSupply/assessmentStudyDocument/ProductIdentification</p>
--	---

	<p>ation/garmentCode/garmentCodeB/color/@codeList: [Optional] - note for this position: <i>this attribute should be used either single or coupled with "listName" and "listVersion"</i> XPath MCIPreliminaryInformationSupply/assessmentStudyDocument/ProductIdentification/garmentCode/garmentCodeB/garmentVariant/variantCode/@codeList: [Optional] - note for this position: <i>at least one out of this attribute and "numberingOrg" should be set</i> XPath MCIPreliminaryInformationSupply/assessmentStudyDocument/ProductIdentification/garmentCode/garmentCodeB/garmentVariant/variantType/@codeList: [Optional] - note for this position: <i>always at least one out of this attribute and "numberingOrg" should be set</i> XPath MCIPreliminaryInformationSupply/ProductIdentification/garmentCode/garmentCodeB/garmentVariant/variantType/@codeList: [Optional] - note for this position: <i>always at least one out of this attribute and "numberingOrg" should be set</i> XPath MCIPreliminaryInformationSupply/assessmentStudyDocument/ProductIdentification/garmentPartCode/color/@codeList: [Optional] - note for this position: <i>this attribute should be used either single or coupled with "listName" and "listVersion"</i> XPath MCIPreliminaryInformationSupply/assessmentStudyDocument/ProductIdentification/garmentPartCode/fabric/@codeList: [Optional] - note for this position: <i>at least one out of this attribute and "numberingOrg" should be set</i> XPath MCIPreliminaryInformationSupply/assessmentStudyDocument/ProductIdentification/garmentPartCode/mod/@codeList: [Optional] - note for this position: <i>at least one out of this attribute and "numberingOrg" should be set</i> XPath MCIPreliminaryInformationSupply/billOfComponents/productComponent/rawCode/color/@codeList: [Optional] - note for this position: <i>this attribute should be used either single or coupled with "listName" and "listVersion"</i> XPath MCIPreliminaryInformationSupply/billOfComponents/productComponent/rawCode/art/@codeList: [Optional] - note for this position: <i>at least one out of this attribute and "numberingOrg" should be set</i> XPath MCIPreliminaryInformationSupply/ProductIdentification/acsCode/art/@codeList: [Optional] - note for this position: <i>at least one out of this attribute and "numberingOrg" should be set</i> XPath MCIPreliminaryInformationSupply/note/@codeList: [Optional] - note for this position: <i>must be used to provide (URL) the list of codes used in "noteLabel"</i> XPath MCIPreliminaryInformationSupply/ProductIdentification/garmentCode/garmentCodeB/artGroup/@codeList: [Optional] - note for this position: <i>at least one out of this attribute and "numberingOrg" should be set</i> XPath MCIPreliminaryInformationSupply/ProductIdentification/garmentCode/garmentCodeB/garmentVariant/variantCode/@codeList: [Optional] - note for this position: <i>at least one out of this attribute and "numberingOrg" should be set</i> XPath MCIPreliminaryInformationSupply/billOfComponents/productComponent/certificate/note/@codeList: [Optional] - note for this position: <i>must be used to provide (URL) the list of codes used in "noteLabel"</i> XPath MCIPreliminaryInformationSupply/assessmentStudyDocument/ProductIdentification/note/@codeList: [Optional] - note for this position: <i>must be used to provide (URL) the list of codes used in "noteLabel"</i> XPath</p>
--	---

	<p>MCIPreliminaryInformationSupply/ProductIdentification/note/@codeList: [Optional] - note for this position: <i>must be used to provide (URL) the list of codes used in "noteLabel"</i> XPath</p> <p>MCIPreliminaryInformationSupply/assessmentStudyDocument/ProductIdentification/garmentCode/garmentCodeB/artGroup/@codeList: [Optional] - note for this position: <i>at least one out of this attribute and "numberingOrg" should be set</i> XPath</p> <p>MCIPreliminaryInformationSupply/ProductIdentification/acsCode/color/@codeList: [Optional] - note for this position: <i>this attribute should be used either single or coupled with "listName" and "listVersion"</i> XPath</p> <p>MCIPreliminaryInformationSupply/assessmentStudyDocument/ProductIdentification/garmentCode/garmentCodeA/art/@codeList: [Optional] - note for this position: <i>at least one out of this attribute and "numberingOrg" should be set</i> XPath</p> <p>MCIPreliminaryInformationSupply/ProductIdentification/garmentCode/garmentCodeA/art/@codeList: [Optional] - note for this position: <i>at least one out of this attribute and "numberingOrg" should be set</i> XPath</p> <p>MCIPreliminaryInformationSupply/endOfLifePerformance/note/@codeList: [Optional] - note for this position: <i>must be used to provide (URL) the list of codes used in "noteLabel"</i> XPath MCIPreliminaryInformationSupply/billOfComponents/productComponent/yarnCode/art/@codeList: [Optional] - note for this position: <i>at least one out of this attribute and "numberingOrg" should be set</i> XPath</p> <p>MCIPreliminaryInformationSupply/assessmentStudyDocument/ProductIdentification/texCode/color/@codeList: [Optional] - note for this position: <i>this attribute should be used either single or coupled with "listName" and "listVersion"</i> XPath MCIPreliminaryInformationSupply/billOfWaste/externalRefDoc/note/@codeList: [Optional] - note for this position: <i>must be used to provide (URL) the list of codes used in "noteLabel"</i> XPath MCIPreliminaryInformationSupply/billOfComponents/productComponent/texCode/art/@codeList: [Optional] - note for this position: <i>at least one out of this attribute and "numberingOrg" should be set</i> XPath</p> <p>MCIPreliminaryInformationSupply/ProductIdentification/garmentCode/garmentCodeB/color/@codeList: [Optional] - note for this position: <i>this attribute should be used either single or coupled with "listName" and "listVersion"</i> XPath</p> <p>MCIPreliminaryInformationSupply/assessmentStudyDocument/ProductIdentification/acsCode/color/@codeList: [Optional] - note for this position: <i>this attribute should be used either single or coupled with "listName" and "listVersion"</i> XPath</p> <p>MCIPreliminaryInformationSupply/ProductIdentification/texCode/color/@codeList: [Optional] - note for this position: <i>this attribute should be used either single or coupled with "listName" and "listVersion"</i> XPath MCIPreliminaryInformationSupply/billOfComponents/productComponent/yarnCode/color/@codeList: [Optional] - note for this position: <i>this attribute should be used either single or coupled with "listName" and "listVersion"</i> XPath</p> <p>MCIPreliminaryInformationSupply/assessmentStudyDocument/ProductIdentification/acsCode/art/@codeList: [Optional] - note for this position: <i>at least one out of this attribute and "numberingOrg" should be set</i></p>
--	--

	<p>set XPath MCIPreliminaryInformationSupply/assessmentStudyDocument/ProductIdentification/acsCode/pattern/@codeList: [Optional] - note for this position: <i>at least one out of this attribute and "numberingOrg" should be set</i></p> <p>set XPath MCIPreliminaryInformationSupply/ProductIdentification/garmentPartCode/mod/@codeList: [Optional] - note for this position: <i>at least one out of this attribute and "numberingOrg" should be set</i></p> <p>XPath MCIPreliminaryInformationSupply/billOfComponents/productComponent/selfAssertion/externalRefDoc/note/@codeList: [Optional] - note for this position: <i>must be used to provide (URL) the list of codes used in "noteLabel"</i></p> <p>XPath MCIPreliminaryInformationSupply/ProductIdentification/texCode/pattern/@codeList: [Optional] - note for this position: <i>at least one out of this attribute and "numberingOrg" should be set</i></p>
collectedFractionMassPercentage	<p>percentage of total collected post consumption fraction mass (calculated on the weight).</p> <p>- base type: , XPath MCIPreliminaryInformationSupply/endOfLifePerformance/collectedFractionMassPercentage: 0-9 - note for this position: <i>Use distinct elements for data related to different years</i></p>
color	<p>colour number of the product, when not included in the model or fabric code</p> <p>- base type: string, max length: 15, XPath MCIPreliminaryInformationSupply/ProductIdentification/garmentPartCode/color: 0-1 - note for this position: <i>when a garment component, it should be the code assigned to the garment article</i></p> <p>XPath MCIPreliminaryInformationSupply/assessmentStudyDocument/ProductIdentification/garmentPartCode/color: 0-1 - note for this position: <i>when a garment component, it should be the code assigned to the garment article</i></p> <p>XPath MCIPreliminaryInformationSupply/billOfComponents/productComponent/garmentPartCode/color: 0-1 - note for this position: <i>when a garment component, it should be the code assigned to the garment article</i></p>
country	<p>code of the nation</p> <p>- base type: string, cod. table: T10 http://www.ebiz.enea.it/moda-ml/repository/codelist/draft/gc_T10.xml</p>
@dateForm	<p>format used for the date</p> <p>- base type: string, cod. table: NT29 http://www.ebiz.enea.it/moda-ml/repository/codelist/draft/gc_NT29.xml</p>
declaredQty	<p>declared net quantity (might be referred to a year; could be measured, estimated or derived from literature or other sources, as specified by the appropriate attribute)</p> <p>- base type: , min inclusive: 0, fraction digits: 2, XPath MCIPreliminaryInformationSupply/billOfWaste/wasteDescriptor/declaredQty: 0-1 - note for this position: <i>resulting waste quantity to obtain the product quantity indicated in referenceProductQuantity</i></p>
dept	<p>name or code of a department</p> <p>- base type: string, max length: 40,</p>
description	<p>free text description. The content of the element must be unique, it might be translated and repeated into more languages (thus no more than one instance for each language).</p> <p>- base type: string, max length: 250, XPath MCIPreliminaryInformationSupply/billOfComponents/productComponent/certificate/description: 0-unbounded</p>

	<p>- note for this position: <i>Only one instance of this element for each different value of 'In' attribute (language)</i> XPath MCIPreliminaryInformationSupply/billOfComponents/ productComponent/texCode/description: 0-unbounded</p> <p>- note for this position: <i>Product description</i> XPath MCIPreliminaryInformationSupply/ProductIdentification/yarnCode/description: 0-unbounded</p> <p>- note for this position: <i>Product description</i> XPath MCIPreliminaryInformationSupply/billOfComponents/ productComponent/selfAssertion/description: 1-99</p> <p>- note for this position: <i>in case insert here reference to existing standard/certification or assertion standards, like ISO14021.</i> <i>Only one instance of this element for each different value of 'In' attribute (language)</i> XPath MCIPreliminaryInformationSupply/assessmentStudyDocument/ProductIdentific ation/yarnCode/description: 0-unbounded</p> <p>- note for this position: <i>Product description</i> XPath MCIPreliminaryInformationSupply/certificate/ certifiedEntity/description: 0-9</p> <p>- note for this position: <i>Name or short textual description of the entity. Only one instanc e of this element for each different value of 'In' attribute (language)</i> XPath MCIPreliminaryInformationSupply/assessmentStudyDocument/ProductIdentific ation/garmentCode/garmentCodeA/description: 0-unbounded</p> <p>- note for this position: <i>Product description</i> XPath MCIPreliminaryInformationSupply/ProductIdentification/rawCode/description: 0 -unbounded</p> <p>- note for this position: <i>Raw material description</i> XPath MCIPreliminaryInformationSupply/billOfComponents/ productComponent/garmentPartCode/description: 0-unbounded</p> <p>- note for this position: <i>Product part description</i> XPath MCIPreliminaryInformationSupply/billOfComponents/ productComponent/acsCode/description: 0-unbounded</p> <p>- note for this position: <i>Product description</i> XPath MCIPreliminaryInformationSupply/billOfComponents/ productComponent/certificate/certifiedEntity/description: 0-9</p> <p>- note for this position: <i>Name or short textual description of the entity. Only one instanc e of this element for each different value of 'In' attribute (language)</i> XPath MCIPreliminaryInformationSupply/assessmentStudyDocument/ProductIdentific ation/description: 0-9</p> <p>- note for this position: <i>Only one instance of this element for each different value of 'In' attribute (language)</i> XPath MCIPreliminaryInformationSupply/expectedUsagePerformance/externalRefDoc /description: 0-unbounded</p> <p>- note for this position: <i>Only one instance of this element for each different value of 'In' attribute (language)</i> XPath MCIPreliminaryInformationSupply/endOfLifePerformance/externalRefDoc/desc ription: 0-unbounded</p> <p>- note for this position: <i>Only one instance of this element for each different value of 'In' attribute (language)</i> XPath MCIPreliminaryInformationSupply/ProductIdentification/garmentCode/garment CodeA/description: 0-unbounded</p> <p>- note for this position: <i>Product description</i> XPath MCIPreliminaryInformationSupply/ProductIdentification/garmentPartCode/desc ription: 0-unbounded</p> <p>- note for this position: <i>Product part description</i> XPath MCIPreliminaryInformationSupply/billOfComponents/ productComponent/selfAssertion/externalRefDoc/description: 0-unbounded</p> <p>- note for this position: <i>Only one instance of this element for each different value of 'In' attribute (language)</i> XPath MCIPreliminaryInformationSupply/assessmentStudyDocument/ProductIdentific ation/rawCode/description: 0-unbounded</p>
--	---

	<p>- note for this position: <i>Raw material description</i> XPath MCIPreliminaryInformationSupply/billOfWaste/ externalRefDoc/description: 0-unbounded</p> <p>- note for this position: <i>Only one instance of this element for each different value of 'ln' attribute (language)</i> XPath MCIPreliminaryInformationSupply/assessmentStudyDocument/ProductIdentification/garmentCode/garmentCodeB/description: 0-unbounded</p> <p>- note for this position: <i>Product description</i> XPath MCIPreliminaryInformationSupply/selfAssertion/ selfAssertionEntity/description: 0-9</p> <p>- note for this position: <i>Name or short textual description of the entity. Only one instance of this element for each different value of 'ln' attribute (language)</i> XPath MCIPreliminaryInformationSupply/billOfComponents/ productComponent/selfAssertion/selfAssertionEntity/description: 0-9</p> <p>- note for this position: <i>Name or short textual description of the entity. Only one instance of this element for each different value of 'ln' attribute (language)</i> XPath MCIPreliminaryInformationSupply/ProductIdentification/texCode/description: 0-unbounded</p> <p>- note for this position: <i>Product description</i> XPath MCIPreliminaryInformationSupply/billOfComponents/ productComponent/rawCode/description: 0-unbounded</p> <p>- note for this position: <i>Raw material description</i> XPath MCIPreliminaryInformationSupply/ProductIdentification/description: 0-9</p> <p>- note for this position: <i>Only one instance of this element for each different value of 'ln' attribute (language)</i> XPath MCIPreliminaryInformationSupply/selfAssertion/description: 1-99</p> <p>- note for this position: <i>in case insert here reference to existing standard/certification or assertion standards, like ISO14021.</i> <i>Only one instance of this element for each different value of 'ln' attribute (language)</i> XPath MCIPreliminaryInformationSupply/billOfComponents/ productComponent/garmentCode/garmentCodeB/description: 0-unbounded</p> <p>- note for this position: <i>Product description</i> XPath MCIPreliminaryInformationSupply/assessmentStudyDocument/ProductIdentification/garmentPartCode/description: 0-unbounded</p> <p>- note for this position: <i>Product part description</i> XPath MCIPreliminaryInformationSupply/billOfWaste/ wasteDescriptor/description: 0-99</p> <p>- note for this position: <i>Only one instance of this element for each different value of 'ln' attribute (language)</i> XPath MCIPreliminaryInformationSupply/ProductIdentification/garmentCode/garmentCodeB/description: 0-unbounded</p> <p>- note for this position: <i>Product description</i> XPath MCIPreliminaryInformationSupply/ProductIdentification/acsCode/description: 0-unbounded</p> <p>- note for this position: <i>Product description</i> XPath MCIPreliminaryInformationSupply/certificate/description: 0-unbounded</p> <p>- note for this position: <i>Only one instance of this element for each different value of 'ln' attribute (language)</i> XPath MCIPreliminaryInformationSupply/assessmentStudyDocument/ProductIdentification/texCode/description: 0-unbounded</p> <p>- note for this position: <i>Product description</i> XPath MCIPreliminaryInformationSupply/billOfComponents/ productComponent/garmentCode/garmentCodeA/description: 0-unbounded</p> <p>- note for this position: <i>Product description</i> XPath MCIPreliminaryInformationSupply/billOfComponents/ productComponent/yarnCode/description: 0-unbounded</p> <p>- note for this position: <i>Product description</i> XPath MCIPreliminaryInformationSupply/assessmentStudyDocument/ProductIdentification/acsCode/description: 0-unbounded</p> <p>- note for this position: <i>Product description</i> XPath MCIPreliminaryInformationSupply/selfAssertion/ externalRefDoc/description: 0-unbounded</p>
--	---

	<p>- note for this position: <i>Only one instance of this element for each different value of 'ln' attribute (language)</i></p> <p>XPath MCIPreliminaryInformationSupply/assessmentStudyDocument/description: 0-unbounded</p> <p>- note for this position: <i>Only one instance of this element for each different value of 'ln' attribute (language)</i></p>
@disclosureLevel	<p>indicates the level of disclosure permitted for the information it is associated with</p> <p>- base type: decimal, cod. table: NT311 http://www.ebiz.enea.it/moda-ml/repository/codelist/draft/gc_NT311.xml</p>
docDate	<p>date of issue of the referenced document, according to one of the patterns YYYY-MM-DD, YYYY-MM-DD:HH-MM or YYYY-WW.</p> <p>- base type: string,</p>
docID	<p>identification number of the referenced document</p> <p>- base type: string, max length: 80, XPath MCIPreliminaryInformationSupply/billOfComponents/productComponent/certificate/docID: 1-1</p> <p>- note for this position: <i>reference to the internal certificate to the systems of the participants in the supply chain</i></p> <p>XPath MCIPreliminaryInformationSupply/certificate/docID: 1-1</p> <p>- note for this position: <i>reference to the internal certificate to the systems of the participants in the supply chain</i></p>
@docStatusCode	<p>current status of the document</p> <p>- base type: decimal, cod. table: NT313 http://www.ebiz.enea.it/moda-ml/repository/codelist/draft/gc_NT313.xml</p>
@docType	<p>type or class to which the referenced document belongs</p> <p>- base type: string, cod. table: T21 http://www.ebiz.enea.it/moda-ml/repository/codelist/draft/gc_T21.xml</p>
documentType	<p>type or class to which the document belongs</p> <p>- base type: string, cod. table: T21 http://www.ebiz.enea.it/moda-ml/repository/codelist/draft/gc_T21.xml</p>
@docValidity	<p>document current validity indicator</p> <p>- base type: boolean,</p>
drop	<p>drop number of the garment</p> <p>- base type: string, max length: 15, XPath MCIPreliminaryInformationSupply/ProductIdentification/garmentCode/garmentCodeB/drop: 0-1</p> <p>- note for this position: <i>Fill this element if the drop is the same for all the sizes of the model. Otherway specify it within the csRange element</i></p> <p>XPath MCIPreliminaryInformationSupply/billOfComponents/productComponent/garmentCode/garmentCodeB/drop: 0-1</p> <p>- note for this position: <i>Fill this element if the drop is the same for all the sizes of the model. Otherway specify it within the csRange element</i></p> <p>XPath MCIPreliminaryInformationSupply/assessmentStudyDocument/ProductIdentification/garmentCode/garmentCodeB/drop: 0-1</p> <p>- note for this position: <i>Fill this element if the drop is the same for all the sizes of the model. Otherway specify it within the csRange element</i></p>
@email	<p>electronic mail address of the contact person within a Party</p> <p>- base type: string, max length: 250,</p>
@encoding	<p>specifies the decoding algorithm of the binary object</p> <p>- base type: normalizedString,</p>
encodingCode	<p>the encoding/decoding algorithm used with the external object (example is 'base64Binary')</p> <p>- base type: normalizedString,</p>
@energyRecoveryEfficiency	<p>efficiency value of the energy recovery process (indicator calculated by Wh per kg of product)</p> <p>- base type: decimal,</p>

entityID	<p>unique identification number assigned to an entity.</p> <p>- base type: string, XPath MCIPreliminaryInformationSupply/certificate/ certifiedEntity/entityID: 1-3</p> <p>- note for this position: <i>Identifier of the entity. More values are allowed as long as they refer to the same entity according to different identification schemes (different scheme/ D value)</i></p> <p>XPath MCIPreliminaryInformationSupply/billOfComponents/ productComponent/certificate/certifiedEntity/entityID: 1-3</p> <p>- note for this position: <i>Identifier of the entity. More values are allowed as long as they refer to the same entity according to different identification schemes (different scheme/ D value)</i></p> <p>XPath MCIPreliminaryInformationSupply/billOfComponents/ productComponent/selfAssertion/selfAssertionEntity/entityID: 1-3</p> <p>- note for this position: <i>Identifier of the entity. More values are allowed as long as they refer to the same entity according to different identification schemes (different scheme/ D value)</i></p> <p>XPath MCIPreliminaryInformationSupply/selfAssertion/ selfAssertionEntity/entityID: 1-3</p> <p>- note for this position: <i>Identifier of the entity. More values are allowed as long as they refer to the same entity according to different identification schemes (different scheme/ D value)</i></p>
entityTypeCode	<p>code that indicates the type of entity to which we refer</p> <p>- base type: string, cod. table: NT201 http://www.ebiz.enea.it/moda-ml/repository/codelist/draft/gc_NT201.xml</p>
EWCWasteCode	<p>code of the waste according to the European Waste Catalogue (CER or EWC) classification. Refer to table NT315 or directly to the standard if the code you are looking for is not present.</p> <p>- base type: string, max length: 9,</p>
@exhaustiveInformation	<p>indicates that the provided information is guaranteed as exhaustive (all the information are mentioned – with the only limitations due to the access rights-) or non-exhaustive (the list contains just some elements): value true=exhaustive</p> <p>- base type: boolean, XPath MCIPreliminaryInformationSupply/billOfWaste/@exhaustiveInformation: [Required]</p> <p>- note for this position: <i>When TRUE the sender guarantees as exhaustive the supplied information (all the information are explicit – with the only limitations due to the access rights-) When FALSE, non-exhaustive (the list contains only some foreseen elements).</i></p> <p>XPath MCIPreliminaryInformationSupply/billOfComponents/@exhaustiveInformation: [Required]</p> <p>- note for this position: <i>When TRUE the sender guarantees as exhaustive the supplied information (all the information are explicit – with the only limitations due to the access rights-) When FALSE, non-exhaustive (the list contains only some foreseen elements).</i></p>
fabric	<p>fabric number of the garment</p> <p>- base type: string, max length: 15, XPath MCIPreliminaryInformationSupply/assessmentStudyDocument/ProductIdentification/garmentPartCode/fabric: 0-1</p> <p>- note for this position: <i>when a garment component, it should be the code assigned to the garment article</i></p> <p>XPath MCIPreliminaryInformationSupply/billOfComponents/ productComponent/garmentPartCode/fabric: 0-1</p> <p>- note for this position: <i>when a garment component, it should be the code assigned to the garment article</i></p> <p>XPath MCIPreliminaryInformationSupply/ProductIdentification/garmentPartCode/fabric: 0-1</p> <p>- note for this position: <i>when a garment component, it should be the code assigned to the garment article</i></p>
@fax	<p>fax number of the contact person within a Party</p> <p>- base type: string, max length: 35,</p>
@fibre	<p>type of fibre used in a textile product</p> <p>- base type: string, cod. table: T19 http://www.ebiz.enea.it/moda-ml/repository/codelist/draft/gc_T19.xml</p>

fileName	unique identifier (name) of the file - base type: string, max length: 255,
@format	the format of the binary content (examples xml, pdf, doc,...) - base type: string,
formatCode	the format of the external object (examples xml, pdf, doc,...) - base type: normalizedString,
fractionMassToCompostingPerc	percentage of collected post consumption fraction mass to composting. - base type: , XPath MCIPreliminaryInformationSupply/endOfLifePerformance/fractionMassToCompostingPerc: 0-9 - note for this position: <i>Use distinct elements for data related to different years</i>
fractionMassToRecyclingPerc	percentage of collected post consumption fraction mass to recycling. - base type: , XPath MCIPreliminaryInformationSupply/endOfLifePerformance/fractionMassToRecyclingPerc: 0-9 - note for this position: <i>Use distinct elements for data related to different years</i>
fractionMassToReusePerc	percentage of collected post consumption fraction mass to reuse. - base type: , XPath MCIPreliminaryInformationSupply/endOfLifePerformance/fractionMassToReusePerc: 0-9 - note for this position: <i>Use distinct elements for data related to different years</i>
@geoRefSystem	georeference system adopted for the coordinate (in example wgs84 with decimal degree o degree with minute and seconds) - base type: string,
gPart	code specifying the type of component or part of a fashion product (sleeve, neck, ...) - base type: string, cod. table: T48 http://www.ebiz.enea.it/moda-ml/repository/codelist/draft/gc_T48.xml
hashFootprint	footprint obtained by applying an hashing algorithm - base type: string, max length: 80,
@hashMethod	type of used hashing algorithm - base type: string, max length: 80, cod. table: NT333 http://www.ebiz.enea.it/moda-ml/repository/codelist/draft/gc_NT333.xml
id	primary identification code of a Party; it is recommended to use an EORI number (with @numberingOrg= "EO") or the format: nation code (ISO 3166) + national tax code (i.e. VAT identification number) with @numberingOrg= "MF" - base type: string, max length: 15,
@idQualifier	Qualification of the identifier. - base type: string, XPath MCIPreliminaryInformationSupply/billOfComponents/productComponent/supplier/additionalIdentifier/@idQualifier: [Optional] - note for this position: <i>this attribute should be used when the numberingOrg attribute is not enough to declare the type of identifier</i>
@indirectIncluded	indicates that also indirect consumptions or emissions or impacts (for example energy consumption of auxiliary systems) have been considered. False value = direct impacts only, true value also indirect impacts. - base type: boolean,
@internallyPerformed	indicates that the operation is carried out internally (value TRUE) of the organization and not at a subcontractor or other subject (value FALSE) - base type: boolean, XPath MCIPreliminaryInformationSupply/billOfComponents/productComponent/@internallyPerformed: [Required] - note for this position: <i>information relating to the entire component</i>
@isStudyDataset	if 'true' the element to which it is associated is the dataset of a study to be treated as a binary dataset, otherwise it is a report - base type: boolean,

issuerAccreditationInfo	accrediting information of the issuer of the document - base type: string,
@isURL	<p>it indicates if the referred element is an URL (true) or not (false)</p> <p>- base type: boolean, XPath</p> <p>MCIPreliminaryInformationSupply/endOfLifePerformance/externalRefDoc/attachment/blockChainReference/uri/@isURL: [Optional] [Default= true]</p> <p>- note for this position: <i>usage of URLs is recommended</i> XPath MCIPreliminaryInformationSupply/billOfComponents/productComponent/refDoc/attachment/blockChainReference/uri/@isURL: [Optional] [Default= true]</p> <p>- note for this position: <i>usage of URLs is recommended</i> XPath</p> <p>MCIPreliminaryInformationSupply/assessmentStudyDocument/attachment/externalReference/uri/@isURL: [Optional] [Default= true]</p> <p>- note for this position: <i>usage of URLs is recommended</i> XPath MCIPreliminaryInformationSupply/billOfWaste/externalRefDoc/attachment/blockChainReference/uri/@isURL: [Optional] [Default= true]</p> <p>- note for this position: <i>usage of URLs is recommended</i> XPath MCIPreliminaryInformationSupply/billOfComponents/productComponent/selfAssertion/externalRefDoc/attachment/externalReference/uri/@isURL: [Optional] [Default= true]</p> <p>- note for this position: <i>usage of URLs is recommended</i> XPath MCIPreliminaryInformationSupply/certificate/attachment/externalReference/uri/@isURL: [Optional] [Default= true]</p> <p>- note for this position: <i>usage of URLs is recommended</i> XPath MCIPreliminaryInformationSupply/billOfComponents/productComponent/certificate/attachment/externalReference/uri/@isURL: [Optional] [Default= true]</p> <p>- note for this position: <i>usage of URLs is recommended</i> XPath</p> <p>MCIPreliminaryInformationSupply/assessmentStudyDocument/attachment/blockChainReference/uri/@isURL: [Optional] [Default= true]</p> <p>- note for this position: <i>usage of URLs is recommended</i> XPath MCIPreliminaryInformationSupply/certificate/attachment/blockChainReference/uri/@isURL: [Optional] [Default= true]</p> <p>- note for this position: <i>usage of URLs is recommended</i> XPath</p> <p>MCIPreliminaryInformationSupply/endOfLifePerformance/externalRefDoc/attachment/externalReference/uri/@isURL: [Optional] [Default= true]</p> <p>- note for this position: <i>usage of URLs is recommended</i> XPath</p> <p>MCIPreliminaryInformationSupply/expectedUsagePerformance/externalRefDoc/attachment/externalReference/uri/@isURL: [Optional] [Default= true]</p> <p>- note for this position: <i>usage of URLs is recommended</i> XPath MCIPreliminaryInformationSupply/billOfWaste/externalRefDoc/attachment/externalReference/uri/@isURL: [Optional] [Default= true]</p> <p>- note for this position: <i>usage of URLs is recommended</i> XPath MCIPreliminaryInformationSupply/billOfComponents/productComponent/selfAssertion/externalRefDoc/attachment/blockChainReference/uri/@isURL: [Optional] [Default= true]</p> <p>- note for this position: <i>usage of URLs is recommended</i> XPath MCIPreliminaryInformationSupply/billOfComponents/productComponent/refDoc/attachment/externalReference/uri/@isURL: [Optional] [Default= true]</p> <p>- note for this position: <i>usage of URLs is recommended</i> XPath</p> <p>MCIPreliminaryInformationSupply/expectedUsagePerformance/externalRefDoc/attachment/blockChainReference/uri/@isURL: [Optional] [Default= true]</p> <p>- note for this position: <i>usage of URLs is recommended</i> XPath MCIPreliminaryInformationSupply/selfAssertion/externalRefDoc/attachment/externalReference/uri/@isURL: [Optional] [Default= true]</p> <p>- note for this position: <i>usage of URLs is recommended</i> XPath MCIPreliminaryInformationSupply/billOfComponents/productComponent/certificate/attachment/blockChainReference/uri/@isURL: [Optional] [Default= true]</p>

	<p>- note for this position: <i>usage of URLs is recommended</i> XPath MCIPreliminaryInformationSupply/selfAssertion/ externalRefDoc/attachment/blockChainReference/uri/@isURL: [Optional] [Default= true] - note for this position: <i>usage of URLs is recommended</i></p>
itemID	<p>number of the line/item of the referenced document - base type: string, max length: 40,</p>
legalName	<p>legal name - base type: string, max length: 250,</p>
@limitedByDisclosureIndicator	<p>indicates whether the content has been restricted by the enforcement of accessibility rights (i.e. it may not be complete): true = restricted, false = not restricted - base type: boolean, XPath MCIPreliminaryInformationSupply/billOfComponents/@limitedByDisclosureIndicator: [Optional] - note for this position: <i>use when you want to indicate that the content provided is only a part of what is actually stored</i> XPath MCIPreliminaryInformationSupply/billOfWaste/@limitedByDisclosureIndicator: [Optional] - note for this position: <i>use when you want to indicate that the content provided is only a part of what is actually stored</i></p>
@listName	<p>the name of the list of codes used to make an instance of the element (it might be thought as descriptive element, i.e. 'fabric printing technologies', or not, i.e. "T264") - base type: string, max length: 40, XPath MCIPreliminaryInformationSupply/assessmentStudyDocument/ProductIdentification/garmentCode/garmentCodeB/fabric/@listName: [Optional] - note for this position: <i>this attribute should always be used coupled with "numberingOr g"</i> XPath MCIPreliminaryInformationSupply/assessmentStudyDocument/ProductIdentification/texCode/color/@listName: [Optional] - note for this position: <i>this attribute should always be used coupled with "numberingOr g"</i> XPath MCIPreliminaryInformationSupply/assessmentStudyDocument/ProductIdentification/garmentCode/garmentCodeA/art/@listName: [Optional] - note for this position: <i>this attribute should always be used coupled with "numberingOr g"</i> XPath MCIPreliminaryInformationSupply/billOfComponents/ productComponent/acsCode/color/@listName: [Optional] - note for this position: <i>this attribute should always be used coupled with "numberingOr g"</i> XPath MCIPreliminaryInformationSupply/billOfComponents/ productComponent/garmentPartCode/mod/@listName: [Optional] - note for this position: <i>this attribute should always be used coupled with "numberingOr g"</i> XPath MCIPreliminaryInformationSupply/ProductIdentification/garmentPartCode/fabric/@listName: [Optional] - note for this position: <i>this attribute should always be used coupled with "numberingOr g"</i> XPath MCIPreliminaryInformationSupply/billOfComponents/ productComponent/garmentCode/garmentCodeA/art/@listName: [Optional] - note for this position: <i>this attribute should always be used coupled with "numberingOr g"</i> XPath MCIPreliminaryInformationSupply/billOfComponents/ productComponent/texCode/pattern/@listName: [Optional] - note for this position: <i>this attribute should always be used coupled with "numberingOr g"</i> XPath MCIPreliminaryInformationSupply/assessmentStudyDocument/ProductIdentification/texCode/pattern/@listName: [Optional] - note for this position: <i>this attribute should always be used coupled with "numberingOr g"</i> XPath MCIPreliminaryInformationSupply/billOfComponents/ productComponent/garmentCode/garmentCodeB/artGroup/@listName: [Optional]</p>

	<p>- note for this position: <i>this attribute should always be used coupled with “numberingOr g”</i> XPath MCIPreliminaryInformationSupply/ProductIdentification/garmentPartCode/mod/@listName: [Optional]</p> <p>- note for this position: <i>this attribute should always be used coupled with “numberingOr g”</i> XPath MCIPreliminaryInformationSupply/ProductIdentification/garmentCode/garmentCodeB/size/@listName: [Optional]</p> <p>- note for this position: <i>this attribute should always be used coupled with “numberingOr g”</i> XPath MCIPreliminaryInformationSupply/ProductIdentification/garmentCode/garmentCodeB/drop/@listName: [Optional]</p> <p>- note for this position: <i>this attribute should always be used coupled with “numberingOr g”</i> XPath MCIPreliminaryInformationSupply/billOfComponents/productComponent/garmentCode/garmentCodeB/size/@listName: [Optional]</p> <p>- note for this position: <i>this attribute should always be used coupled with “numberingOr g”</i> XPath MCIPreliminaryInformationSupply/assessmentStudyDocument/ProductIdentification/rawCode/color/@listName: [Optional]</p> <p>- note for this position: <i>this attribute should always be used coupled with “numberingOr g”</i> XPath MCIPreliminaryInformationSupply/assessmentStudyDocument/ProductIdentification/rawCode/art/@listName: [Optional]</p> <p>- note for this position: <i>this attribute should always be used coupled with “numberingOr g”</i> XPath MCIPreliminaryInformationSupply/ProductIdentification/garmentCode/garmentCodeB/color/@listName: [Optional]</p> <p>- note for this position: <i>this attribute should always be used coupled with “numberingOr g”</i> XPath MCIPreliminaryInformationSupply/billOfComponents/productComponent/garmentPartCode/size/@listName: [Optional]</p> <p>- note for this position: <i>this attribute should always be used coupled with “numberingOr g”</i> XPath MCIPreliminaryInformationSupply/assessmentStudyDocument/ProductIdentification/garmentCode/garmentCodeB/color/@listName: [Optional]</p> <p>- note for this position: <i>this attribute should always be used coupled with “numberingOr g”</i> XPath MCIPreliminaryInformationSupply/billOfComponents/productComponent/garmentCode/garmentCodeB/fabric/@listName: [Optional]</p> <p>- note for this position: <i>this attribute should always be used coupled with “numberingOr g”</i> XPath MCIPreliminaryInformationSupply/billOfComponents/productComponent/garmentCode/garmentCodeB/color/@listName: [Optional]</p> <p>- note for this position: <i>this attribute should always be used coupled with “numberingOr g”</i> XPath MCIPreliminaryInformationSupply/ProductIdentification/garmentCode/garmentCodeB/artGroup/@listName: [Optional]</p> <p>- note for this position: <i>this attribute should always be used coupled with “numberingOr g”</i> XPath MCIPreliminaryInformationSupply/assessmentStudyDocument/ProductIdentification/garmentCode/garmentCodeB/mod/@listName: [Optional]</p> <p>- note for this position: <i>this attribute should always be used coupled with “numberingOr g”</i> XPath MCIPreliminaryInformationSupply/billOfComponents/productComponent/acsCode/art/@listName: [Optional]</p> <p>- note for this position: <i>this attribute should always be used coupled with “numberingOr g”</i> XPath MCIPreliminaryInformationSupply/ProductIdentification/garmentCode/garment</p>
--	---

	<p>CodeB/mod/@listName: [Optional] - note for this position: <i>this attribute should always be used coupled with “numberingOr g”</i> XPath MCIPreliminaryInformationSupply/assessmentStudyDocument/ProductIdentification/garmentCode/garmentCodeB/garmentVariant/variantType/@listName: [Optional] - note for this position: <i>this attribute should always be used coupled with “numberingOr g”</i> XPath MCIPreliminaryInformationSupply/billOfComponents/ productComponent/garmentCode/garmentCodeB/mod/@listName: [Optional] - note for this position: <i>this attribute should always be used coupled with “numberingOr g”</i> XPath MCIPreliminaryInformationSupply/assessmentStudyDocument/ProductIdentification/yarnCode/art/@listName: [Optional] - note for this position: <i>this attribute should always be used coupled with “numberingOr g”</i> XPath MCIPreliminaryInformationSupply/ProductIdentification/garmentCode/garmentCodeB/fabric/@listName: [Optional] - note for this position: <i>this attribute should always be used coupled with “numberingOr g”</i> XPath MCIPreliminaryInformationSupply/assessmentStudyDocument/ProductIdentification/yarnCode/color/@listName: [Optional] - note for this position: <i>this attribute should always be used coupled with “numberingOr g”</i> XPath MCIPreliminaryInformationSupply/ProductIdentification/garmentCode/garmentCodeB/garmentVariant/variantCode/@listName: [Optional] - note for this position: <i>this attribute should always be used coupled with “numberingOr g”</i> XPath MCIPreliminaryInformationSupply/billOfComponents/ productComponent/rawCode/art/@listName: [Optional] - note for this position: <i>this attribute should always be used coupled with “numberingOr g”</i> XPath MCIPreliminaryInformationSupply/billOfComponents/ productComponent/garmentCode/garmentCodeB/drop/@listName: [Optional] - note for this position: <i>this attribute should always be used coupled with “numberingOr g”</i> XPath MCIPreliminaryInformationSupply/billOfComponents/ productComponent/garmentPartCode/fabric/@listName: [Optional] - note for this position: <i>this attribute should always be used coupled with “numberingOr g”</i> XPath MCIPreliminaryInformationSupply/assessmentStudyDocument/ProductIdentification/texCode/art/@listName: [Optional] - note for this position: <i>this attribute should always be used coupled with “numberingOr g”</i> XPath MCIPreliminaryInformationSupply/billOfComponents/ productComponent/acsCode/pattern/@listName: [Optional] - note for this position: <i>this attribute should always be used coupled with “numberingOr g”</i> XPath MCIPreliminaryInformationSupply/ProductIdentification/garmentPartCode/color/@listName: [Optional] - note for this position: <i>this attribute should always be used coupled with “numberingOr g”</i> XPath MCIPreliminaryInformationSupply/billOfComponents/ productComponent/garmentCode/garmentCodeB/garmentVariant/variantType/@listName: [Optional] - note for this position: <i>this attribute should always be used coupled with “numberingOr g”</i> XPath MCIPreliminaryInformationSupply/ProductIdentification/garmentPartCode/size/@listName: [Optional] - note for this position: <i>this attribute should always be used coupled with “numberingOr g”</i> XPath</p>
--	--

	<p>MCIPreliminaryInformationSupply/ProductIdentification/garmentCode/garmentCodeB/garmentVariant/variantType/@listName: [Optional] - note for this position: <i>this attribute should always be used coupled with “numberingOr g”</i> XPath</p> <p>MCIPreliminaryInformationSupply/assessmentStudyDocument/ProductIdentification/garmentCode/garmentCodeB/drop/@listName: [Optional] - note for this position: <i>this attribute should always be used coupled with “numberingOr g”</i> XPath MCIPreliminaryInformationSupply/billOfComponents/productComponent/texCode/color/@listName: [Optional] - note for this position: <i>this attribute should always be used coupled with “numberingOr g”</i> XPath MCIPreliminaryInformationSupply/billOfComponents/productComponent/garmentPartCode/color/@listName: [Optional] - note for this position: <i>this attribute should always be used coupled with “numberingOr g”</i> XPath MCIPreliminaryInformationSupply/billOfComponents/productComponent/garmentCode/garmentCodeB/garmentVariant/variantCode/@listName: [Optional] - note for this position: <i>this attribute should always be used coupled with “numberingOr g”</i> XPath</p> <p>MCIPreliminaryInformationSupply/ProductIdentification/acsCode/color/@listName: [Optional] - note for this position: <i>this attribute should always be used coupled with “numberingOr g”</i> XPath MCIPreliminaryInformationSupply/billOfComponents/productComponent/yarnCode/art/@listName: [Optional] - note for this position: <i>this attribute should always be used coupled with “numberingOr g”</i> XPath</p> <p>MCIPreliminaryInformationSupply/ProductIdentification/texCode/pattern/@listName: [Optional] - note for this position: <i>this attribute should always be used coupled with “numberingOr g”</i> XPath</p> <p>MCIPreliminaryInformationSupply/ProductIdentification/yarnCode/color/@listName: [Optional] - note for this position: <i>this attribute should always be used coupled with “numberingOr g”</i> XPath MCIPreliminaryInformationSupply/billOfComponents/productComponent/yarnCode/color/@listName: [Optional] - note for this position: <i>this attribute should always be used coupled with “numberingOr g”</i> XPath</p> <p>MCIPreliminaryInformationSupply/ProductIdentification/rawCode/art/@listName: [Optional] - note for this position: <i>this attribute should always be used coupled with “numberingOr g”</i> XPath</p> <p>MCIPreliminaryInformationSupply/assessmentStudyDocument/ProductIdentification/garmentCode/garmentCodeB/garmentVariant/variantCode/@listName: [Optional] - note for this position: <i>this attribute should always be used coupled with “numberingOr g”</i> XPath</p> <p>MCIPreliminaryInformationSupply/assessmentStudyDocument/ProductIdentification/garmentPartCode/size/@listName: [Optional] - note for this position: <i>this attribute should always be used coupled with “numberingOr g”</i> XPath MCIPreliminaryInformationSupply/billOfComponents/productComponent/texCode/art/@listName: [Optional] - note for this position: <i>this attribute should always be used coupled with “numberingOr g”</i> XPath</p> <p>MCIPreliminaryInformationSupply/ProductIdentification/acsCode/art/@listName: [Optional] - note for this position: <i>this attribute should always be used coupled with “numberingOr g”</i></p>
--	--

	<p>XPath MCIPreliminaryInformationSupply/ProductIdentification/texCode/art/@listName : [Optional] - note for this position: <i>this attribute should always be used coupled with “numberingOr g”</i></p> <p>XPath MCIPreliminaryInformationSupply/assessmentStudyDocument/ProductIdentification/garmentPartCode/fabric/@listName: [Optional] - note for this position: <i>this attribute should always be used coupled with “numberingOr g”</i></p> <p>XPath MCIPreliminaryInformationSupply/assessmentStudyDocument/ProductIdentification/garmentCode/garmentCodeB/artGroup/@listName: [Optional] - note for this position: <i>this attribute should always be used coupled with “numberingOr g”</i></p> <p>XPath MCIPreliminaryInformationSupply/assessmentStudyDocument/ProductIdentification/acsCode/color/@listName: [Optional] - note for this position: <i>this attribute should always be used coupled with “numberingOr g”</i></p> <p>XPath MCIPreliminaryInformationSupply/assessmentStudyDocument/ProductIdentification/acsCode/pattern/@listName: [Optional] - note for this position: <i>this attribute should always be used coupled with “numberingOr g”</i></p> <p>XPath MCIPreliminaryInformationSupply/assessmentStudyDocument/ProductIdentification/garmentCode/garmentCodeB/size/@listName: [Optional] - note for this position: <i>this attribute should always be used coupled with “numberingOr g”</i></p> <p>XPath MCIPreliminaryInformationSupply/ProductIdentification/garmentCode/garmentCodeA/art/@listName: [Optional] - note for this position: <i>this attribute should always be used coupled with “numberingOr g”</i></p> <p>XPath MCIPreliminaryInformationSupply/billOfComponents/productComponent/rawCode/color/@listName: [Optional] - note for this position: <i>this attribute should always be used coupled with “numberingOr g”</i></p> <p>XPath MCIPreliminaryInformationSupply/assessmentStudyDocument/ProductIdentification/garmentPartCode/mod/@listName: [Optional] - note for this position: <i>this attribute should always be used coupled with “numberingOr g”</i></p> <p>XPath MCIPreliminaryInformationSupply/ProductIdentification/rawCode/color/@listName: [Optional] - note for this position: <i>this attribute should always be used coupled with “numberingOr g”</i></p> <p>XPath MCIPreliminaryInformationSupply/billOfComponents/productComponent/refDoc/season/@listName: [Optional] - note for this position: <i>this attribute should always be used coupled with “numberingOr g”</i></p> <p>XPath MCIPreliminaryInformationSupply/assessmentStudyDocument/ProductIdentification/garmentPartCode/color/@listName: [Optional] - note for this position: <i>this attribute should always be used coupled with “numberingOr g”</i></p> <p>XPath MCIPreliminaryInformationSupply/ProductIdentification/yarnCode/art/@listName: [Optional] - note for this position: <i>this attribute should always be used coupled with “numberingOr g”</i></p> <p>XPath MCIPreliminaryInformationSupply/ProductIdentification/acsCode/pattern/@listName: [Optional] - note for this position: <i>this attribute should always be used coupled with “numberingOr g”</i></p> <p>XPath</p>
--	--

	<p>MCIPreliminaryInformationSupply/assessmentStudyDocument/ProductIdentification/acsCode/art/@listName: [Optional] - note for this position: <i>this attribute should always be used coupled with “numberingOr g”</i> XPath</p> <p>MCIPreliminaryInformationSupply/ProductIdentification/texCode/color/@listName: [Optional] - note for this position: <i>this attribute should always be used coupled with “numberingOr g”</i></p>
@listVersion	<p>it specifies the version of the list of codes used to make an instance of the element - base type: string, max length: 6, XPath</p> <p>MCIPreliminaryInformationSupply/assessmentStudyDocument/ProductIdentification/acsCode/art/@listVersion: [Optional] - note for this position: <i>this attribute should always be used coupled with “numberingOr g” and “listName”</i> XPath</p> <p>MCIPreliminaryInformationSupply/assessmentStudyDocument/ProductIdentification/rawCode/color/@listVersion: [Optional] - note for this position: <i>this attribute should always be used coupled with “numberingOr g” and “listName”</i> XPath</p> <p>MCIPreliminaryInformationSupply/assessmentStudyDocument/ProductIdentification/acsCode/pattern/@listVersion: [Optional] - note for this position: <i>this attribute should always be used coupled with “numberingOr g” and “listName”</i> XPath MCIPreliminaryInformationSupply/billOfComponents/productComponent/garmentCode/garmentCodeB/mod/@listVersion: [Optional] - note for this position: <i>this attribute should always be used coupled with “numberingOr g” and “listName”</i> XPath</p> <p>MCIPreliminaryInformationSupply/ProductIdentification/texCode/pattern/@listVersion: [Optional] - note for this position: <i>this attribute should always be used coupled with “numberingOr g” and “listName”</i> XPath</p> <p>MCIPreliminaryInformationSupply/assessmentStudyDocument/ProductIdentification/rawCode/art/@listVersion: [Optional] - note for this position: <i>this attribute should always be used coupled with “numberingOr g” and “listName”</i> XPath MCIPreliminaryInformationSupply/billOfComponents/productComponent/garmentCode/garmentCodeB/color/@listVersion: [Optional]]] - note for this position: <i>this attribute should always be used coupled with “numberingOr g” and “listName”</i> XPath</p> <p>MCIPreliminaryInformationSupply/ProductIdentification/texCode/color/@listVersion: [Optional] - note for this position: <i>this attribute should always be used coupled with “numberingOr g” and “listName”</i> XPath</p> <p>MCIPreliminaryInformationSupply/ProductIdentification/garmentPartCode/size/@listVersion: [Optional] - note for this position: <i>this attribute should always be used coupled with “numberingOr g” and “listName”</i> XPath MCIPreliminaryInformationSupply/billOfComponents/productComponent/garmentCode/garmentCodeB/fabric/@listVersion: [Optional] l] - note for this position: <i>this attribute should always be used coupled with “numberingOr g” and “listName”</i> XPath</p> <p>MCIPreliminaryInformationSupply/assessmentStudyDocument/ProductIdentification/yarnCode/color/@listVersion: [Optional] - note for this position: <i>this attribute should always be used coupled with “numberingOr g” and “listName”</i> XPath</p> <p>MCIPreliminaryInformationSupply/assessmentStudyDocument/ProductIdentification/garmentCode/garmentCodeB/garmentVariant/variantType/@listVersion: [Optional]</p>

	<p>al]</p> <p>- note for this position: <i>this attribute should always be used coupled with “numberingOr g” and “listName”</i></p> <p>XPath MCIPreliminaryInformationSupply/ProductIdentification/rawCode/art/ @listVersion: [Optional]</p> <p>- note for this position: <i>this attribute should always be used coupled with “numberingOr g” and “listName”</i></p> <p>XPath MCIPreliminaryInformationSupply/ProductIdentification/garmentCode/garmentCodeB/artGroup/ @listVersion: [Optional]</p> <p>- note for this position: <i>this attribute should always be used coupled with “numberingOr g” and “listName”</i></p> <p>XPath MCIPreliminaryInformationSupply/assessmentStudyDocument/ProductIdentification/garmentCode/garmentCodeB/garmentVariant/variantCode/ @listVersion: [Optional]</p> <p>- note for this position: <i>this attribute should always be used coupled with “numberingOr g” and “listName”</i></p> <p>XPath MCIPreliminaryInformationSupply/ProductIdentification/garmentCode/garmentCodeB/mod/ @listVersion: [Optional]</p> <p>- note for this position: <i>this attribute should always be used coupled with “numberingOr g” and “listName”</i></p> <p>XPath MCIPreliminaryInformationSupply/ProductIdentification/garmentCode/garmentCodeB/size/ @listVersion: [Optional]</p> <p>- note for this position: <i>this attribute should always be used coupled with “numberingOr g” and “listName”</i></p> <p>XPath MCIPreliminaryInformationSupply/ProductIdentification/yarnCode/art/ @listVersion: [Optional]</p> <p>- note for this position: <i>this attribute should always be used coupled with “numberingOr g” and “listName”</i></p> <p>XPath MCIPreliminaryInformationSupply/billOfComponents/ productComponent/garmentPartCode/fabric/ @listVersion: [Optional]</p> <p>- note for this position: <i>this attribute should always be used coupled with “numberingOr g” and “listName”</i></p> <p>XPath MCIPreliminaryInformationSupply/assessmentStudyDocument/ProductIdentification/garmentCode/garmentCodeB/mod/ @listVersion: [Optional]</p> <p>- note for this position: <i>this attribute should always be used coupled with “numberingOr g” and “listName”</i></p> <p>XPath MCIPreliminaryInformationSupply/ProductIdentification/garmentCode/garmentCodeB/garmentVariant/variantType/ @listVersion: [Optional]</p> <p>- note for this position: <i>this attribute should always be used coupled with “numberingOr g” and “listName”</i></p> <p>XPath MCIPreliminaryInformationSupply/billOfComponents/ productComponent/garmentPartCode/color/ @listVersion: [Optional]</p> <p>- note for this position: <i>this attribute should always be used coupled with “numberingOr g” and “listName”</i></p> <p>XPath MCIPreliminaryInformationSupply/ProductIdentification/rawCode/color/ @listVersion: [Optional]</p> <p>- note for this position: <i>this attribute should always be used coupled with “numberingOr g” and “listName”</i></p> <p>XPath MCIPreliminaryInformationSupply/ProductIdentification/garmentCode/garmentCodeB/garmentVariant/variantCode/ @listVersion: [Optional]</p> <p>- note for this position: <i>this attribute should always be used coupled with “numberingOr g” and “listName”</i></p> <p>XPath MCIPreliminaryInformationSupply/billOfComponents/ productComponent/acsCode/pattern/ @listVersion: [Optional]</p> <p>- note for this position: <i>this attribute should always be used coupled with “numberingOr g” and “listName”</i></p> <p>XPath MCIPreliminaryInformationSupply/assessmentStudyDocument/ProductIdentification/garmentCode/garmentCodeB/size/ @listVersion: [Optional]</p>
--	---

	<p>- note for this position: <i>this attribute should always be used coupled with “numberingOr g” and “listName”</i> XPath MCIPreliminaryInformationSupply/ProductIdentification/garmentCode/garmentCodeB/drop/@listVersion: [Optional]</p> <p>- note for this position: <i>this attribute should always be used coupled with “numberingOr g” and “listName”</i> XPath MCIPreliminaryInformationSupply/billOfComponents/ productComponent/garmentPartCode/mod/@listVersion: [Optional]</p> <p>- note for this position: <i>this attribute should always be used coupled with “numberingOr g” and “listName”</i> XPath MCIPreliminaryInformationSupply/ProductIdentification/yarnCode/color/@listVersion: [Optional]</p> <p>- note for this position: <i>this attribute should always be used coupled with “numberingOr g” and “listName”</i> XPath MCIPreliminaryInformationSupply/assessmentStudyDocument/ProductIdentification/yarnCode/art/@listVersion: [Optional]</p> <p>- note for this position: <i>this attribute should always be used coupled with “numberingOr g” and “listName”</i> XPath MCIPreliminaryInformationSupply/ProductIdentification/garmentCode/garmentCodeB/fabric/@listVersion: [Optional]</p> <p>- note for this position: <i>this attribute should always be used coupled with “numberingOr g” and “listName”</i> XPath MCIPreliminaryInformationSupply/ProductIdentification/texCode/art/@listVersion: [Optional]</p> <p>- note for this position: <i>this attribute should always be used coupled with “numberingOr g” and “listName”</i> XPath MCIPreliminaryInformationSupply/billOfComponents/ productComponent/yarnCode/color/@listVersion: [Optional]</p> <p>- note for this position: <i>this attribute should always be used coupled with “numberingOr g” and “listName”</i> XPath MCIPreliminaryInformationSupply/assessmentStudyDocument/ProductIdentification/garmentCode/garmentCodeB/artGroup/@listVersion: [Optional]</p> <p>- note for this position: <i>this attribute should always be used coupled with “numberingOr g” and “listName”</i> XPath MCIPreliminaryInformationSupply/assessmentStudyDocument/ProductIdentification/garmentCode/garmentCodeB/color/@listVersion: [Optional]</p> <p>- note for this position: <i>this attribute should always be used coupled with “numberingOr g” and “listName”</i> XPath MCIPreliminaryInformationSupply/assessmentStudyDocument/ProductIdentification/garmentCode/garmentCodeB/fabric/@listVersion: [Optional]</p> <p>- note for this position: <i>this attribute should always be used coupled with “numberingOr g” and “listName”</i> XPath MCIPreliminaryInformationSupply/billOfComponents/ productComponent/yarnCode/art/@listVersion: [Optional]</p> <p>- note for this position: <i>this attribute should always be used coupled with “numberingOr g” and “listName”</i> XPath MCIPreliminaryInformationSupply/ProductIdentification/garmentCode/garmentCodeB/color/@listVersion: [Optional]</p> <p>- note for this position: <i>this attribute should always be used coupled with “numberingOr g” and “listName”</i> XPath MCIPreliminaryInformationSupply/billOfComponents/ productComponent/acsCode/art/@listVersion: [Optional]</p> <p>- note for this position: <i>this attribute should always be used coupled with “numberingOr g” and “listName”</i> XPath MCIPreliminaryInformationSupply/billOfComponents/ productComponent/garmentPartCode/size/@listVersion: [Optional]</p> <p>- note for this position: <i>this attribute should always be used coupled with “numberingOr g” and “listName”</i> XPath MCIPreliminaryInformationSupply/assessmentStudyDocument/ProductIdentific</p>
--	---

	<p>ation/acsCode/color/@listVersion: [Optional] - note for this position: <i>this attribute should always be used coupled with “numberingOr g” and “listName”</i> XPath MCIPreliminaryInformationSupply/billOfComponents/ productComponent/garmentCode/garmentCodeA/art/@listVersion: [Optional] - note for this position: <i>this attribute should always be used coupled with “numberingOr g” and “listName”</i> XPath MCIPreliminaryInformationSupply/assessmentStudyDocument/ProductIdentific ation/garmentCode/garmentCodeA/art/@listVersion: [Optional] - note for this position: <i>this attribute should always be used coupled with “numberingOr g” and “listName”</i> XPath MCIPreliminaryInformationSupply/ProductIdentification/acsCode/art/@listVersi on: [Optional] - note for this position: <i>this attribute should always be used coupled with “numberingOr g” and “listName”</i> XPath MCIPreliminaryInformationSupply/billOfComponents/ productComponent/garmentCode/garmentCodeB/drop/@listVersion: [Optional] - note for this position: <i>this attribute should always be used coupled with “numberingOr g” and “listName”</i> XPath MCIPreliminaryInformationSupply/ProductIdentification/acsCode/color/@listVer sion: [Optional] - note for this position: <i>this attribute should always be used coupled with “numberingOr g” and “listName”</i> XPath MCIPreliminaryInformationSupply/ProductIdentification/garmentPartCode/color /@listVersion: [Optional] - note for this position: <i>this attribute should always be used coupled with “numberingOr g” and “listName”</i> XPath MCIPreliminaryInformationSupply/billOfComponents/ productComponent/garmentCode/garmentCodeB/garmentVariant/variantCode/ @listVersion: [Optional] - note for this position: <i>this attribute should always be used coupled with “numberingOr g” and “listName”</i> XPath MCIPreliminaryInformationSupply/ProductIdentification/garmentCode/garment CodeA/art/@listVersion: [Optional] - note for this position: <i>this attribute should always be used coupled with “numberingOr g” and “listName”</i> XPath MCIPreliminaryInformationSupply/assessmentStudyDocument/ProductIdentific ation/garmentPartCode/size/@listVersion: [Optional] - note for this position: <i>this attribute should always be used coupled with “numberingOr g” and “listName”</i> XPath MCIPreliminaryInformationSupply/billOfComponents/ productComponent/texCode/pattern/@listVersion: [Optional] - note for this position: <i>this attribute should always be used coupled with “numberingOr g” and “listName”</i> XPath MCIPreliminaryInformationSupply/billOfComponents/ productComponent/garmentCode/garmentCodeB/artGroup/@listVersion: [Opti onal] - note for this position: <i>this attribute should always be used coupled with “numberingOr g” and “listName”</i> XPath MCIPreliminaryInformationSupply/ProductIdentification/garmentPartCode/mod/ @listVersion: [Optional] - note for this position: <i>this attribute should always be used coupled with “numberingOr g” and “listName”</i> XPath MCIPreliminaryInformationSupply/ProductIdentification/acsCode/pattern/@list Version: [Optional] - note for this position: <i>this attribute should always be used coupled with “numberingOr g” and “listName”</i> XPath MCIPreliminaryInformationSupply/billOfComponents/ productComponent/garmentCode/garmentCodeB/size/@listVersion: [Optional] - note for this position: <i>this attribute should always be used coupled with “numberingOr g” and “listName”</i></p>
--	--

	<p>XPath MCIPreliminaryInformationSupply/ProductIdentification/garmentPartCode/fabric/@listVersion: [Optional] - note for this position: <i>this attribute should always be used coupled with “numberingOr g” and “listName”</i></p> <p>XPath MCIPreliminaryInformationSupply/billOfComponents/productComponent/rawCode/art/@listVersion: [Optional] - note for this position: <i>this attribute should always be used coupled with “numberingOr g” and “listName”</i></p> <p>XPath MCIPreliminaryInformationSupply/assessmentStudyDocument/ProductIdentification/texCode/art/@listVersion: [Optional] - note for this position: <i>this attribute should always be used coupled with “numberingOr g” and “listName”</i></p> <p>XPath MCIPreliminaryInformationSupply/assessmentStudyDocument/ProductIdentification/texCode/pattern/@listVersion: [Optional] - note for this position: <i>this attribute should always be used coupled with “numberingOr g” and “listName”</i></p> <p>XPath MCIPreliminaryInformationSupply/assessmentStudyDocument/ProductIdentification/garmentPartCode/fabric/@listVersion: [Optional] - note for this position: <i>this attribute should always be used coupled with “numberingOr g” and “listName”</i></p> <p>XPath MCIPreliminaryInformationSupply/billOfComponents/productComponent/refDoc/season/@listVersion: [Optional] - note for this position: <i>this attribute should always be used coupled with “numberingOr g” and “listName”</i></p> <p>XPath MCIPreliminaryInformationSupply/assessmentStudyDocument/ProductIdentification/texCode/color/@listVersion: [Optional] - note for this position: <i>this attribute should always be used coupled with “numberingOr g” and “listName”</i></p> <p>XPath MCIPreliminaryInformationSupply/billOfComponents/productComponent/garmentCode/garmentCodeB/garmentVariant/variantType/@listVersion: [Optional] - note for this position: <i>this attribute should always be used coupled with “numberingOr g” and “listName”</i></p> <p>XPath MCIPreliminaryInformationSupply/assessmentStudyDocument/ProductIdentification/garmentCode/garmentCodeB/drop/@listVersion: [Optional] - note for this position: <i>this attribute should always be used coupled with “numberingOr g” and “listName”</i></p> <p>XPath MCIPreliminaryInformationSupply/billOfComponents/productComponent/acsCode/color/@listVersion: [Optional] - note for this position: <i>this attribute should always be used coupled with “numberingOr g” and “listName”</i></p> <p>XPath MCIPreliminaryInformationSupply/billOfComponents/productComponent/texCode/color/@listVersion: [Optional] - note for this position: <i>this attribute should always be used coupled with “numberingOr g” and “listName”</i></p> <p>XPath MCIPreliminaryInformationSupply/billOfComponents/productComponent/rawCode/color/@listVersion: [Optional] - note for this position: <i>this attribute should always be used coupled with “numberingOr g” and “listName”</i></p> <p>XPath MCIPreliminaryInformationSupply/billOfComponents/productComponent/texCode/art/@listVersion: [Optional] - note for this position: <i>this attribute should always be used coupled with “numberingOr g” and “listName”</i></p> <p>XPath MCIPreliminaryInformationSupply/assessmentStudyDocument/ProductIdentification/garmentPartCode/mod/@listVersion: [Optional] - note for this position: <i>this attribute should always be used coupled with “numberingOr g” and “listName”</i></p> <p>XPath MCIPreliminaryInformationSupply/assessmentStudyDocument/ProductIdentification/garmentPartCode/color/@listVersion: [Optional] - note for this position: <i>this attribute should always be used coupled with “numberingOr g” and “listName”</i></p>
--	--

@ln	<p>Language code.</p> <ul style="list-style-type: none"> - base type: string, cod. table: NT60 http://www.ebiz.enea.it/moda-ml/repository/codelist/draft/gc_NT60.xml XPath MCIPreliminaryInformationSupply/selfAssertion/sustainabilityCharacteristicText/@ln: [Optional] - note for this position: <i>Indicates the language of the text</i> XPath MCIPreliminaryInformationSupply/billOfComponents/productComponent/selfAssertion/sustainabilityCharacteristicText/@ln: [Optional] - note for this position: <i>Indicates the language of the text</i> XPath MCIPreliminaryInformationSupply/billOfComponents/productComponent/certificate/sustainabilityCharacteristicText/@ln: [Optional] - note for this position: <i>Indicates the language of the text</i> XPath MCIPreliminaryInformationSupply/certificate/sustainabilityCharacteristicText/@ln: [Optional] - note for this position: <i>Indicates the language of the text</i>
location	<p>specification of a location. It can be represented by an identification code (preferable) or a short text (not recommended). For example a GLN code that requires to assign the value "GLN" to the attribute @LRI.</p> <ul style="list-style-type: none"> - base type: string, max length: 128, XPath MCIPreliminaryInformationSupply/billOfWaste/facilityLocation/location: 1-1 - note for this position: <i>Use this element only to indicate an identification code of this place.</i>
@logo	<p>company logo (URL of the image jpeg or gif). It is recommended that the width of the image does not exceed 640 pixel.</p> <ul style="list-style-type: none"> - base type: string, max length: 255,
@LRI	<p>issuer of the identifier (or identification system) of a location.</p> <ul style="list-style-type: none"> - base type: string, cod. table: NT3 http://www.ebiz.enea.it/moda-ml/repository/codelist/draft/gc_NT3.xml
@materialSource	<p>Indicates whether the material is virgin or comes from recycling or reuse processes</p> <ul style="list-style-type: none"> - base type: string, cod. table: T306 http://www.ebiz.enea.it/moda-ml/repository/codelist/draft/gc_T306.xml
@mime	<p>the mime type of the binary object</p> <ul style="list-style-type: none"> - base type: normalizedString,
mimeCode	<p>mime type of the external object</p> <ul style="list-style-type: none"> - base type: normalizedString,
mod	<p>model number of the garment</p> <ul style="list-style-type: none"> - base type: string, max length: 15, XPath MCIPreliminaryInformationSupply/assessmentStudyDocument/ProductIdentification/garmentPartCode/mod: 1-1 - note for this position: <i>when a garment component, it should be the code assigned to the garment article</i> XPath MCIPreliminaryInformationSupply/ProductIdentification/garmentPartCode/mod: 1-1 - note for this position: <i>when a garment component, it should be the code assigned to the garment article</i> XPath MCIPreliminaryInformationSupply/billOfComponents/productComponent/garmentPartCode/mod: 1-1 - note for this position: <i>when a garment component, it should be the code assigned to the garment article</i>
msgDate	<p>date of issue of the present message (xml document), according to one of the patterns YYYY-MM-DD, YYYY-MM-DD:HH-MM or YYYY-WW.</p> <ul style="list-style-type: none"> - base type: string,
msgID	<p>key identifier of the business document in the information system of the issuing Party. In case of more despatches of the same business document, it is unchanged.</p> <ul style="list-style-type: none"> - base type: string, max length: 35,
note	<p>free text or structured (computer processing) note. For note structuring use the attributes "noteLabel" and "codelist"</p>

	<p>- base type: string, max length: 350,</p>
@noteLabel	<p>subject qualifier of a note</p> <p>- base type: string, max length: 35,</p> <p>XPath MCIPreliminaryInformationSupply/expectedUsagePerformance/note/@noteLabel: [Optional]</p> <p>- note for this position: <i>must be used to qualify the subject of the note</i></p> <p>XPath MCIPreliminaryInformationSupply/ProductIdentification/note/@noteLabel: [Optional]</p> <p>- note for this position: <i>must be used to qualify the subject of the note</i></p> <p>XPath MCIPreliminaryInformationSupply/billOfWaste/wasteDescriptor/note/@noteLabel: [Optional]</p> <p>- note for this position: <i>must be used to qualify the subject of the note</i></p> <p>XPath MCIPreliminaryInformationSupply/certificate/note/@noteLabel: [Optional]</p> <p>- note for this position: <i>must be used to qualify the subject of the note</i></p> <p>XPath MCIPreliminaryInformationSupply/expectedUsagePerformance/externalRefDoc/note/@noteLabel: [Optional]</p> <p>- note for this position: <i>must be used to qualify the subject of the note</i></p> <p>XPath MCIPreliminaryInformationSupply/billOfComponents/productComponent/selfAssertion/externalRefDoc/note/@noteLabel: [Optional]</p> <p>- note for this position: <i>must be used to qualify the subject of the note</i></p> <p>XPath MCIPreliminaryInformationSupply/billOfWaste/note/@noteLabel: [Optional]</p> <p>- note for this position: <i>must be used to qualify the subject of the note</i></p> <p>XPath MCIPreliminaryInformationSupply/billOfWaste/externalRefDoc/note/@noteLabel: [Optional]</p> <p>- note for this position: <i>must be used to qualify the subject of the note</i></p> <p>XPath MCIPreliminaryInformationSupply/assessmentStudyDocument/ProductIdentification/note/@noteLabel: [Optional]</p> <p>- note for this position: <i>must be used to qualify the subject of the note</i></p> <p>XPath MCIPreliminaryInformationSupply/endTimePerformance/externalRefDoc/note/@noteLabel: [Optional]</p> <p>- note for this position: <i>must be used to qualify the subject of the note</i></p> <p>XPath MCIPreliminaryInformationSupply/assessmentStudyDocument/note/@noteLabel: [Optional]</p> <p>- note for this position: <i>must be used to qualify the subject of the note</i></p> <p>XPath MCIPreliminaryInformationSupply/billOfComponents/productComponent/certificate/note/@noteLabel: [Optional]</p> <p>- note for this position: <i>must be used to qualify the subject of the note</i></p> <p>XPath MCIPreliminaryInformationSupply/note/@noteLabel: [Optional]</p> <p>- note for this position: <i>must be used to qualify the subject of the note</i></p> <p>XPath MCIPreliminaryInformationSupply/selfAssertion/externalRefDoc/note/@noteLabel: [Optional]</p> <p>- note for this position: <i>must be used to qualify the subject of the note</i></p> <p>XPath MCIPreliminaryInformationSupply/endTimePerformance/note/@noteLabel: [Optional]</p> <p>- note for this position: <i>must be used to qualify the subject of the note</i></p>
@numberingOrg	<p>code specifying the organisation who has created or owns the coding or numbering system</p> <p>- base type: string, cod. table: NT6</p> <p>http://www.ebiz.enea.it/moda-ml/repository/codelist/draft/gc_NT6.xml</p> <p>XPath MCIPreliminaryInformationSupply/ProductIdentification/rawCode/color/@numberingOrg: [Optional]</p> <p>- note for this position: <i>this attribute should be used either single or coupled with "listName" and "listVersion"</i></p> <p>XPath MCIPreliminaryInformationSupply/ProductIdentification/rawCode/art/@numberingOrg: [Optional]</p> <p>- note for this position: <i>this attribute should be used either single or coupled with "listName" and "listVersion"</i></p> <p>XPath MCIPreliminaryInformationSupply/ProductIdentification/rawCode/added/@num</p>

	<p>beringOrg: [Optional] - note for this position: <i>this attribute should be used either single or coupled with "listName" and "listVersion"</i> XPath MCIPreliminaryInformationSupply/assessmentStudyDocument/ProductIdentification/garmentCode/garmentCodeB/size/@numberingOrg: [Optional] - note for this position: <i>this attribute should be used either single or coupled with "listName" and "listVersion"</i> XPath MCIPreliminaryInformationSupply/note/@numberingOrg: [Optional] - note for this position: <i>must be used to specify the organization that created the list of codes used in "noteLabel"</i> XPath MCIPreliminaryInformationSupply/ProductIdentification/yarnCode/color/@numberingOrg: [Optional] - note for this position: <i>this attribute should be used either single or coupled with "listName" and "listVersion"</i> XPath MCIPreliminaryInformationSupply/expectedUsagePerformance/externalRefDoc/docID/@numberingOrg: [Optional] - note for this position: <i>here can be specified whose document numbering is used (e.g. : Client, Supplier, ..)</i> XPath MCIPreliminaryInformationSupply/assessmentStudyDocument/ProductIdentification/garmentCode/garmentCodeB/artGroup/@numberingOrg: [Optional] - note for this position: <i>this attribute should be used either single or coupled with "listName" and "listVersion"</i> XPath MCIPreliminaryInformationSupply/ProductIdentification/yarnCode/art/@numberingOrg: [Optional] - note for this position: <i>this attribute should be used either single or coupled with "listName" and "listVersion"</i> XPath MCIPreliminaryInformationSupply/assessmentStudyDocument/ProductIdentification/garmentCode/garmentCodeB/color/@numberingOrg: [Optional] - note for this position: <i>this attribute should be used either single or coupled with "listName" and "listVersion"</i> XPath MCIPreliminaryInformationSupply/expectedUsagePerformance/note/@numberingOrg: [Optional] - note for this position: <i>must be used to specify the organization that created the list of codes used in "noteLabel"</i> XPath MCIPreliminaryInformationSupply/assessmentStudyDocument/ProductIdentification/garmentCode/garmentCodeB/garmentVariant/variantCode/@numberingOrg: [Optional] - note for this position: <i>this attribute should be used either single or coupled with "listName" and "listVersion"</i> XPath MCIPreliminaryInformationSupply/endTimePerformance/externalRefDoc/docID/@numberingOrg: [Optional] - note for this position: <i>here can be specified whose document numbering is used (e.g. : Client, Supplier, ..)</i> XPath MCIPreliminaryInformationSupply/endTimePerformance/note/@numberingOrg: [Optional] - note for this position: <i>must be used to specify the organization that created the list of codes used in "noteLabel"</i> XPath MCIPreliminaryInformationSupply/expectedUsagePerformance/externalRefDoc/note/@numberingOrg: [Optional] - note for this position: <i>must be used to specify the organization that created the list of codes used in "noteLabel"</i> XPath MCIPreliminaryInformationSupply/endTimePerformance/externalRefDoc/note/@numberingOrg: [Optional] - note for this position: <i>must be used to specify the organization that created the list of codes used in "noteLabel"</i> XPath MCIPreliminaryInformationSupply/assessmentStudyDocument/ProductIdentific</p>
--	--

	<p>ation/garmentCode/garmentCodeB/garmentVariant/variantType/@numberingOrg: [Optional] - note for this position: <i>this attribute should be used either single or coupled with "listName" and "listVersion"</i> XPath</p> <p>MCIPreliminaryInformationSupply/assessmentStudyDocument/ProductIdentification/garmentCode/garmentCodeB/drop/@numberingOrg: [Optional] - note for this position: <i>this attribute should be used either single or coupled with "listName" and "listVersion"</i> XPath</p> <p>MCIPreliminaryInformationSupply/ProductIdentification/yarnCode/added/@numberingOrg: [Optional] - note for this position: <i>this attribute should be used either single or coupled with "listName" and "listVersion"</i> XPath</p> <p>MCIPreliminaryInformationSupply/assessmentStudyDocument/note/@numberingOrg: [Optional] - note for this position: <i>must be used to specify the organization that created the list of codes used in "noteLabel"</i> XPath</p> <p>MCIPreliminaryInformationSupply/ProductIdentification/garmentPartCode/size/@numberingOrg: [Optional] - note for this position: <i>this attribute should be used either single or coupled with "listName" and "listVersion"</i> XPath</p> <p>MCIPreliminaryInformationSupply/ProductIdentification/garmentCode/garmentCodeB/added/@numberingOrg: [Optional] - note for this position: <i>this attribute should be used either single or coupled with "listName" and "listVersion"</i> XPath</p> <p>MCIPreliminaryInformationSupply/billOfWaste/wasteDescriptor/note/@numberingOrg: [Optional] - note for this position: <i>must be used to specify the organization that created the list of codes used in "noteLabel"</i> XPath</p> <p>MCIPreliminaryInformationSupply/ProductIdentification/garmentPartCode/fabric/@numberingOrg: [Optional] - note for this position: <i>this attribute should be used either single or coupled with "listName" and "listVersion"</i> XPath</p> <p>MCIPreliminaryInformationSupply/ProductIdentification/garmentPartCode/color/@numberingOrg: [Optional] - note for this position: <i>this attribute should be used either single or coupled with "listName" and "listVersion"</i> XPath</p> <p>MCIPreliminaryInformationSupply/ProductIdentification/garmentPartCode/added/@numberingOrg: [Optional] - note for this position: <i>this attribute should be used either single or coupled with "listName" and "listVersion"</i> XPath</p> <p>MCIPreliminaryInformationSupply/assessmentStudyDocument/ProductIdentification/note/@numberingOrg: [Optional] - note for this position: <i>must be used to specify the organization that created the list of codes used in "noteLabel"</i> XPath</p> <p>MCIPreliminaryInformationSupply/ProductIdentification/garmentCode/garmentCodeB/garmentVariant/variantCode/@numberingOrg: [Optional] - note for this position: <i>this attribute should be used either single or coupled with "listName" and "listVersion"</i> XPath</p> <p>MCIPreliminaryInformationSupply/ProductIdentification/garmentCode/garmentCodeB/drop/@numberingOrg: [Optional] - note for this position: <i>this attribute should be used either single or coupled with "listName" and "listVersion"</i> XPath</p> <p>MCIPreliminaryInformationSupply/ProductIdentification/garmentCode/garmentCodeB/size/@numberingOrg: [Optional] - note for this position: <i>this attribute should be used either single or coupled with "listName" and "listVersion"</i> XPath</p>
--	---

	<p>MCIPreliminaryInformationSupply/ProductIdentification/garmentCode/garmentCodeB/artGroup/@numberingOrg: [Optional] - note for this position: <i>this attribute should be used either single or coupled with "listName" and "listVersion"</i> XPath</p> <p>MCIPreliminaryInformationSupply/ProductIdentification/garmentCode/garmentCodeB/fabric/@numberingOrg: [Optional] - note for this position: <i>this attribute should be used either single or coupled with "listName" and "listVersion"</i> XPath</p> <p>MCIPreliminaryInformationSupply/ProductIdentification/garmentCode/garmentCodeB/color/@numberingOrg: [Optional] - note for this position: <i>this attribute should be used either single or coupled with "listName" and "listVersion"</i> XPath</p> <p>MCIPreliminaryInformationSupply/ProductIdentification/garmentCode/garmentCodeB/garmentVariant/variantType/@numberingOrg: [Optional] - note for this position: <i>this attribute should be used either single or coupled with "listName" and "listVersion"</i> XPath</p> <p>MCIPreliminaryInformationSupply/ProductIdentification/texCode/color/@numberingOrg: [Optional] - note for this position: <i>this attribute should be used either single or coupled with "listName" and "listVersion"</i> XPath</p> <p>MCIPreliminaryInformationSupply/ProductIdentification/texCode/pattern/@numberingOrg: [Optional] - note for this position: <i>this attribute should be used either single or coupled with "listName" and "listVersion"</i> XPath</p> <p>MCIPreliminaryInformationSupply/ProductIdentification/texCode/added/@numberingOrg: [Optional] - note for this position: <i>this attribute should be used either single or coupled with "listName" and "listVersion"</i> XPath</p> <p>MCIPreliminaryInformationSupply/assessmentStudyDocument/ProductIdentification/garmentCode/garmentCodeB/added/@numberingOrg: [Optional] - note for this position: <i>this attribute should be used either single or coupled with "listName" and "listVersion"</i> XPath</p> <p>MCIPreliminaryInformationSupply/ProductIdentification/texCode/art/@numberingOrg: [Optional] - note for this position: <i>this attribute should be used either single or coupled with "listName" and "listVersion"</i> XPath</p> <p>MCIPreliminaryInformationSupply/billOfWaste/note/@numberingOrg: [Optional] - note for this position: <i>must be used to specify the organization that created the list of codes used in "noteLabel"</i> XPath</p> <p>MCIPreliminaryInformationSupply/ProductIdentification/note/@numberingOrg: [Optional] - note for this position: <i>must be used to specify the organization that created the list of codes used in "noteLabel"</i> XPath</p> <p>MCIPreliminaryInformationSupply/billOfWaste/externalRefDoc/note/@numberingOrg: [Optional] - note for this position: <i>must be used to specify the organization that created the list of codes used in "noteLabel"</i> XPath</p> <p>MCIPreliminaryInformationSupply/ProductIdentification/acsCode/added/@numberingOrg: [Optional] - note for this position: <i>this attribute should be used either single or coupled with "listName" and "listVersion"</i> XPath</p> <p>MCIPreliminaryInformationSupply/ProductIdentification/garmentCode/garmentCodeA/art/@numberingOrg: [Optional] - note for this position: <i>this attribute should be used either single or coupled with "listName" and "listVersion"</i> XPath</p> <p>MCIPreliminaryInformationSupply/billOfWaste/externalRefDoc/docID/@numberingOrg: [Optional] - note for this position: <i>here can be specified whose document numbering is used (e.g.</i></p>
--	--

	<p>: Client, Supplier, ..) XPath MCIPreliminaryInformationSupply/assessmentStudyDocument/ProductIdentification/garmentCode/garmentCodeA/art/@numberingOrg: [Optional] - note for this position: <i>this attribute should be used either single or coupled with "listName" and "listVersion"</i> XPath MCIPreliminaryInformationSupply/ProductIdentification/acsCode/art/@numberingOrg: [Optional] - note for this position: <i>this attribute should be used either single or coupled with "listName" and "listVersion"</i> XPath MCIPreliminaryInformationSupply/ProductIdentification/acsCode/pattern/@numberingOrg: [Optional] - note for this position: <i>this attribute should be used either single or coupled with "listName" and "listVersion"</i> XPath MCIPreliminaryInformationSupply/ProductIdentification/acsCode/color/@numberingOrg: [Optional] - note for this position: <i>this attribute should be used either single or coupled with "listName" and "listVersion"</i> XPath MCIPreliminaryInformationSupply/billOfComponents/productComponent/garmentPartCode/color/@numberingOrg: [Optional] - note for this position: <i>this attribute should be used either single or coupled with "listName" and "listVersion"</i> XPath MCIPreliminaryInformationSupply/assessmentStudyDocument/docID/@numberingOrg: [Optional] - note for this position: <i>here can be specified whose document numbering is used (e.g. : Client, Supplier, ..)</i> XPath MCIPreliminaryInformationSupply/billOfComponents/productComponent/garmentPartCode/fabric/@numberingOrg: [Optional] - note for this position: <i>this attribute should be used either single or coupled with "listName" and "listVersion"</i> XPath MCIPreliminaryInformationSupply/selfAssertion/externalRefDoc/note/@numberingOrg: [Optional] - note for this position: <i>must be used to specify the organization that created the list of codes used in "noteLabel"</i> XPath MCIPreliminaryInformationSupply/billOfComponents/productComponent/supplier/additionalIdentifier/@numberingOrg: [Optional] - note for this position: <i>here the issuer of the identifier must be specified</i> XPath MCIPreliminaryInformationSupply/billOfComponents/productComponent/garmentPartCode/size/@numberingOrg: [Optional] - note for this position: <i>this attribute should be used either single or coupled with "listName" and "listVersion"</i> XPath MCIPreliminaryInformationSupply/billOfComponents/productComponent/selfAssertion/externalRefDoc/note/@numberingOrg: [Optional] - note for this position: <i>must be used to specify the organization that created the list of codes used in "noteLabel"</i> XPath MCIPreliminaryInformationSupply/billOfComponents/productComponent/garmentPartCode/added/@numberingOrg: [Optional] - note for this position: <i>this attribute should be used either single or coupled with "listName" and "listVersion"</i> XPath MCIPreliminaryInformationSupply/billOfComponents/productComponent/acsCode/pattern/@numberingOrg: [Optional] - note for this position: <i>this attribute should be used either single or coupled with "listName" and "listVersion"</i> XPath MCIPreliminaryInformationSupply/assessmentStudyDocument/ProductIdentification/rawCode/added/@numberingOrg: [Optional] - note for this position: <i>this attribute should be used either single or coupled with "listName" and "listVersion"</i> XPath MCIPreliminaryInformationSupply/billOfComponents/productComponent/acsCode/art/@numberingOrg: [Optional] - note for this position: <i>this attribute should be used either single or coupled with "listName" and "listVersion"</i> XPath MCIPreliminaryInformationSupply/assessmentStudyDocument/ProductIdentification/yarnCode/color/@numberingOrg: [Optional]</p>
--	---

	<p>- note for this position: <i>this attribute should be used either single or coupled with "listName" and "listVersion"</i> XPath MCIPreliminaryInformationSupply/assessmentStudyDocument/ProductIdentification/yarnCode/art/@numberingOrg: [Optional]</p> <p>- note for this position: <i>this attribute should be used either single or coupled with "listName" and "listVersion"</i> XPath MCIPreliminaryInformationSupply/billOfComponents/ productComponent/acsCode/color/@numberingOrg: [Optional]</p> <p>- note for this position: <i>this attribute should be used either single or coupled with "listName" and "listVersion"</i> XPath MCIPreliminaryInformationSupply/assessmentStudyDocument/ProductIdentification/rawCode/color/@numberingOrg: [Optional]</p> <p>- note for this position: <i>this attribute should be used either single or coupled with "listName" and "listVersion"</i> XPath MCIPreliminaryInformationSupply/billOfComponents/ productComponent/acsCode/added/@numberingOrg: [Optional]</p> <p>- note for this position: <i>this attribute should be used either single or coupled with "listName" and "listVersion"</i> XPath MCIPreliminaryInformationSupply/assessmentStudyDocument/ProductIdentification/rawCode/art/@numberingOrg: [Optional]</p> <p>- note for this position: <i>this attribute should be used either single or coupled with "listName" and "listVersion"</i> XPath MCIPreliminaryInformationSupply/billOfComponents/ productComponent/garmentCode/garmentCodeA/art/@numberingOrg: [Optional]</p> <p>- note for this position: <i>this attribute should be used either single or coupled with "listName" and "listVersion"</i> XPath MCIPreliminaryInformationSupply/billOfComponents/ productComponent/garmentCode/garmentCodeB/added/@numberingOrg: [Optional]</p> <p>- note for this position: <i>this attribute should be used either single or coupled with "listName" and "listVersion"</i> XPath MCIPreliminaryInformationSupply/billOfComponents/ productComponent/refDoc/docID/@numberingOrg: [Optional]</p> <p>- note for this position: <i>here can be specified whose document numbering is used (e.g. : Client, Supplier, ..)</i> XPath MCIPreliminaryInformationSupply/billOfComponents/ productComponent/garmentCode/garmentCodeB/color/@numberingOrg: [Optional]</p> <p>- note for this position: <i>this attribute should be used either single or coupled with "listName" and "listVersion"</i> XPath MCIPreliminaryInformationSupply/certificate/note/@numberingOrg: [Optional]</p> <p>- note for this position: <i>must be used to specify the organization that created the list of codes used in "noteLabel"</i> XPath MCIPreliminaryInformationSupply/billOfComponents/ productComponent/garmentCode/garmentCodeB/drop/@numberingOrg: [Optional]</p> <p>- note for this position: <i>this attribute should be used either single or coupled with "listName" and "listVersion"</i> XPath MCIPreliminaryInformationSupply/selfAssertion/ externalRefDoc/docID/@numberingOrg: [Optional]</p> <p>- note for this position: <i>here can be specified whose document numbering is used (e.g. : Client, Supplier, ..)</i> XPath MCIPreliminaryInformationSupply/billOfComponents/ productComponent/garmentCode/garmentCodeB/garmentVariant/variantCode/@numberingOrg: [Optional]</p> <p>- note for this position: <i>this attribute should be used either single or coupled with "listName" and "listVersion"</i> XPath MCIPreliminaryInformationSupply/billOfComponents/ productComponent/garmentCode/garmentCodeB/artGroup/@numberingOrg: [Optional]</p> <p>- note for this position: <i>this attribute should be used either single or coupled with "listName" and "listVersion"</i> XPath MCIPreliminaryInformationSupply/billOfComponents/ productComponent/garmentCode/garmentCodeB/garmentVariant/variantType/@numberingOrg: [Optional]</p>
--	--

	<p>- note for this position: <i>this attribute should be used either single or coupled with "listName" and "listVersion"</i> XPath MCIPreliminaryInformationSupply/billOfComponents/ productComponent/garmentCode/garmentCodeB/size/@numberingOrg: [Optional]</p> <p>- note for this position: <i>this attribute should be used either single or coupled with "listName" and "listVersion"</i> XPath MCIPreliminaryInformationSupply/billOfComponents/ productComponent/certificate/docID/@numberingOrg: [Optional]</p> <p>- note for this position: <i>here can be specified whose document numbering is used (e.g. : Client, Supplier, ..)</i> XPath MCIPreliminaryInformationSupply/certificate/docID/@numberingOrg: [Optional]</p> <p>- note for this position: <i>here can be specified whose document numbering is used (e.g. : Client, Supplier, ..)</i> XPath MCIPreliminaryInformationSupply/billOfComponents/ productComponent/refDoc/season/@numberingOrg: [Optional]</p> <p>- note for this position: <i>this attribute should be used either single or coupled with "listName" and "listVersion"</i> XPath MCIPreliminaryInformationSupply/billOfComponents/ productComponent/garmentCode/garmentCodeB/fabric/@numberingOrg: [Optional]</p> <p>- note for this position: <i>this attribute should be used either single or coupled with "listName" and "listVersion"</i> XPath MCIPreliminaryInformationSupply/billOfComponents/ productComponent/yarnCode/art/@numberingOrg: [Optional]</p> <p>- note for this position: <i>this attribute should be used either single or coupled with "listName" and "listVersion"</i> XPath MCIPreliminaryInformationSupply/assessmentStudyDocument/ProductIdentification/acsCode/added/@numberingOrg: [Optional]</p> <p>- note for this position: <i>this attribute should be used either single or coupled with "listName" and "listVersion"</i> XPath MCIPreliminaryInformationSupply/assessmentStudyDocument/ProductIdentification/garmentPartCode/fabric/@numberingOrg: [Optional]</p> <p>- note for this position: <i>this attribute should be used either single or coupled with "listName" and "listVersion"</i> XPath MCIPreliminaryInformationSupply/billOfComponents/ productComponent/yarnCode/color/@numberingOrg: [Optional]</p> <p>- note for this position: <i>this attribute should be used either single or coupled with "listName" and "listVersion"</i> XPath MCIPreliminaryInformationSupply/billOfComponents/ productComponent/texCode/art/@numberingOrg: [Optional]</p> <p>- note for this position: <i>this attribute should be used either single or coupled with "listName" and "listVersion"</i> XPath MCIPreliminaryInformationSupply/assessmentStudyDocument/ProductIdentification/acsCode/art/@numberingOrg: [Optional]</p> <p>- note for this position: <i>this attribute should be used either single or coupled with "listName" and "listVersion"</i> XPath MCIPreliminaryInformationSupply/assessmentStudyDocument/ProductIdentification/acsCode/color/@numberingOrg: [Optional]</p> <p>- note for this position: <i>this attribute should be used either single or coupled with "listName" and "listVersion"</i> XPath MCIPreliminaryInformationSupply/billOfComponents/ productComponent/yarnCode/added/@numberingOrg: [Optional]</p> <p>- note for this position: <i>this attribute should be used either single or coupled with "listName" and "listVersion"</i> XPath MCIPreliminaryInformationSupply/assessmentStudyDocument/ProductIdentification/acsCode/pattern/@numberingOrg: [Optional]</p> <p>- note for this position: <i>this attribute should be used either single or coupled with "listName" and "listVersion"</i> XPath MCIPreliminaryInformationSupply/billOfComponents/ productComponent/certificate/note/@numberingOrg: [Optional]</p> <p>- note for this position: <i>must be used to specify the organization that created the list of codes used in "noteLabel"</i> XPath MCIPreliminaryInformationSupply/assessmentStudyDocument/ProductIdentification</p>
--	---

	<p>ation/garmentCode/garmentCodeB/fabric/@numberingOrg: [Optional] - note for this position: <i>this attribute should be used either single or coupled with "listName" and "listVersion"</i> XPath MCIPreliminaryInformationSupply/assessmentStudyDocument/ProductIdentification/garmentPartCode/added/@numberingOrg: [Optional] - note for this position: <i>this attribute should be used either single or coupled with "listName" and "listVersion"</i> XPath MCIPreliminaryInformationSupply/assessmentStudyDocument/ProductIdentification/garmentPartCode/color/@numberingOrg: [Optional] - note for this position: <i>this attribute should be used either single or coupled with "listName" and "listVersion"</i> XPath MCIPreliminaryInformationSupply/billOfComponents/productComponent/rawCode/added/@numberingOrg: [Optional] - note for this position: <i>this attribute should be used either single or coupled with "listName" and "listVersion"</i> XPath MCIPreliminaryInformationSupply/billOfComponents/productComponent/rawCode/color/@numberingOrg: [Optional] - note for this position: <i>this attribute should be used either single or coupled with "listName" and "listVersion"</i> XPath MCIPreliminaryInformationSupply/billOfComponents/productComponent/selfAssertion/externalRefDoc/docID/@numberingOrg: [Optional] - note for this position: <i>here can be specified whose document numbering is used (e.g. : Client, Supplier, ..)</i> XPath MCIPreliminaryInformationSupply/billOfComponents/productComponent/rawCode/art/@numberingOrg: [Optional] - note for this position: <i>this attribute should be used either single or coupled with "listName" and "listVersion"</i> XPath MCIPreliminaryInformationSupply/assessmentStudyDocument/ProductIdentification/garmentPartCode/size/@numberingOrg: [Optional] - note for this position: <i>this attribute should be used either single or coupled with "listName" and "listVersion"</i> XPath MCIPreliminaryInformationSupply/assessmentStudyDocument/ProductIdentification/texCode/added/@numberingOrg: [Optional] - note for this position: <i>this attribute should be used either single or coupled with "listName" and "listVersion"</i> XPath MCIPreliminaryInformationSupply/billOfComponents/productComponent/texCode/color/@numberingOrg: [Optional] - note for this position: <i>this attribute should be used either single or coupled with "listName" and "listVersion"</i> XPath MCIPreliminaryInformationSupply/assessmentStudyDocument/ProductIdentification/texCode/pattern/@numberingOrg: [Optional] - note for this position: <i>this attribute should be used either single or coupled with "listName" and "listVersion"</i> XPath MCIPreliminaryInformationSupply/assessmentStudyDocument/ProductIdentification/texCode/color/@numberingOrg: [Optional] - note for this position: <i>this attribute should be used either single or coupled with "listName" and "listVersion"</i> XPath MCIPreliminaryInformationSupply/billOfComponents/productComponent/texCode/added/@numberingOrg: [Optional] - note for this position: <i>this attribute should be used either single or coupled with "listName" and "listVersion"</i> XPath MCIPreliminaryInformationSupply/assessmentStudyDocument/ProductIdentification/texCode/art/@numberingOrg: [Optional] - note for this position: <i>this attribute should be used either single or coupled with "listName" and "listVersion"</i> XPath MCIPreliminaryInformationSupply/billOfComponents/productComponent/texCode/pattern/@numberingOrg: [Optional] - note for this position: <i>this attribute should be used either single or coupled with "listName" and "listVersion"</i> XPath MCIPreliminaryInformationSupply/assessmentStudyDocument/ProductIdentification</p>
--	--

	<p>ation/yarnCode/added/@numberingOrg: [Optional]</p> <p>- note for this position: <i>this attribute should be used either single or coupled with "listName" and "listVersion"</i></p>
objectTypeCode	<p>code that identifies the type of object</p> <p>- base type: string, cod. table: T302</p> <p>http://www.ebiz.enea.it/moda-ml/repository/codelist/draft/gc_T302.xml</p>
@part	<p>percent fraction</p> <p>- base type: decimal, min inclusive: 1, max inclusive: 100, fraction digits: 2,</p> <p>XPath MCIPreliminaryInformationSupply/billOfWaste/wasteDescriptor/wasteFinalTreatmentType/@part: [Optional]</p> <p>- note for this position: <i>Indicates the percentage of waste destined for this treatment (referred to relatedQuantity units), if absent it is assumed to be 100%.</i></p>
pattern	<p>pattern/design number of the product, when not included in the article code</p> <p>- base type: string, max length: 15,</p>
percCompos	<p>fiber percentage in the product composition</p> <p>- base type: decimal, min inclusive: 0, max inclusive: 100, fraction digits: 2,</p>
@percSourcesRenewable	<p>indicates the percentage of renewable sources</p> <p>- base type: decimal,</p> <p>XPath MCIPreliminaryInformationSupply/productCompos/percCompos/@percSourcesRenewable: [Optional]</p> <p>- note for this position: <i>use only for virgin material</i></p>
person	<p>name of a person (e.g. contact person within an organization)</p> <p>- base type: string, max length: 40,</p>
@phone	<p>phone number of the contact person within a Party</p> <p>- base type: string, max length: 35,</p>
platformServiceCode	<p>code of the available service</p> <p>- base type: string, cod. table: TRK01</p> <p>http://www.ebiz.enea.it/moda-ml/repository/codelist/draft/gc_TRK01.xml</p>
postCode	<p>code defining the postal zone</p> <p>- base type: string, max length: 10,</p>
productReferenceQty	<p>net reference quantity of the product</p> <p>- base type: decimal, min inclusive: 0, fraction digits: 2,</p> <p>XPath MCIPreliminaryInformationSupply/billOfWaste/wasteDescriptor/productReferenceQty: 0-1</p> <p>- note for this position: <i>this element can be omitted if is contained in a bill in which the quantity of the functional unit of reference is already known (for example PEFProductionPrimaryDataSet)</i></p> <p>XPath MCIPreliminaryInformationSupply/billOfWaste/productReferenceQty: 0-1 Best Practice</p> <p>- note for this position: <i>when present, each contained input/output figure refers to this quantity of product / material</i></p> <p>XPath MCIPreliminaryInformationSupply/productReferenceQty: 0-1</p> <p>- note for this position: <i>indicate the quantity of product to which the element refers (for example in relation to the quantities of each component)</i></p> <p>XPath MCIPreliminaryInformationSupply/billOfComponents/productReferenceQty: 0-1</p> <p>- note for this position: <i>when filled, all the quantities indicated in product Component are relative to the realization of this quantity of product.</i></p>
publishableAbstract	<p>publishable abstract of the study</p> <p>- base type: string,</p> <p>XPath MCIPreliminaryInformationSupply/assessmentStudyDocument/publishableAbstract: 0-99</p> <p>- note for this position: <i>Only one instance of this element for each different value of 'In' attribute (language)</i></p>
qty	<p>net quantity of the article or object correlated, qualified by the function of the document (ordering, delivering, ..) and by the context</p> <p>- base type: decimal, min inclusive: 0, fraction digits: 2,</p> <p>XPath MCIPreliminaryInformationSupply/billOfComponents/productComponent/qty: 0-2</p> <p>- note for this position: <i>this value is referred to the unit of measure of the product declared in the billOfComponents</i></p>

@recyclingProcessEfficiency	<p>recycling process efficiency rate (percentage by weight).</p> <ul style="list-style-type: none"> - base type: decimal, min inclusive: 0, max inclusive: 100, XPath MCIPreliminaryInformationSupply/billOfWaste/wasteDescriptor/wasteFinalTreatmentType/@recyclingProcessEfficiency: [Optional] - note for this position: <i>efficiency of the recycling process adopted on the waste</i> XPath MCIPreliminaryInformationSupply/productCompos/percCompos/@recyclingProcessEfficiency: [Optional] - note for this position: <i>process efficiency declared by the fibre supplier</i>
@recyclingProcessMethod	<p>recycling process method</p> <ul style="list-style-type: none"> - base type: string, cod. table: T307 http://www.ebiz.enea.it/moda-ml/repository/codelist/draft/gc_T307.xml XPath MCIPreliminaryInformationSupply/productCompos/percCompos/@recyclingProcessMethod: [Optional] - note for this position: <i>use only for non virgin material</i>
@referenceYear	<p>reference year of the element to whom is associated</p> <ul style="list-style-type: none"> - base type: positiveInteger,
reviewDate	<p>date of accomplishment of the document review, according to one of the patterns YYYY-MM-DD, YYYY-MM-DD:HH-MM or YYYY-WW.</p> <ul style="list-style-type: none"> - base type: string,
@role	<p>Third Party role qualifier</p> <ul style="list-style-type: none"> - base type: string, cod. table: NT2 http://www.ebiz.enea.it/moda-ml/repository/codelist/draft/gc_NT2.xml XPath MCIPreliminaryInformationSupply/SRVheader/senderParty/@role: [Optional] - note for this position: <i>The use of this attribute is mandatory when the element to which it is associated has TRCHeader as its parent.</i> XPath MCIPreliminaryInformationSupply/SRVheader/receiverParty/@role: [Optional] - note for this position: <i>The use of this attribute is mandatory when the element to which it is associated has TRCHeader as its parent.</i>
routeLength	<p>length of a route</p> <ul style="list-style-type: none"> - base type: decimal, min inclusive: 0, fraction digits: 2, XPath MCIPreliminaryInformationSupply/billOfWaste/wasteDescriptor/routeLength: 0-1 - note for this position: <i>length of the path taken to bring the waste to the final treatment (kilometers as unit of measure are preferred)</i>
@schemeID	<p>identifier of an identification scheme</p> <ul style="list-style-type: none"> - base type: string, XPath MCIPreliminaryInformationSupply/expectedUsagePerformance/externalRefDoc/attachment/hashFootprint/@schemeID: [Optional] - note for this position: <i>specify for which system this hash footprint might be used as identifier (for example HDFS system..)</i> XPath MCIPreliminaryInformationSupply/billOfComponents/productComponent/selfAssertion/externalRefDoc/attachment/hashFootprint/@schemeID: [Optional] - note for this position: <i>specify for which system this hash footprint might be used as identifier (for example HDFS system..)</i> XPath MCIPreliminaryInformationSupply/billOfComponents/productComponent/certificate/attachment/hashFootprint/@schemeID: [Optional] - note for this position: <i>specify for which system this hash footprint might be used as identifier (for example HDFS system..)</i> XPath MCIPreliminaryInformationSupply/assessmentStudyDocument/attachment/hashFootprint/@schemeID: [Optional] - note for this position: <i>specify for which system this hash footprint might be used as identifier (for example HDFS system..)</i> XPath MCIPreliminaryInformationSupply/certificate/attachment/hashFootprint/@schemeID: [Optional] - note for this position: <i>specify for which system this hash footprint might be used as identifier (for example HDFS system..)</i> XPath MCIPreliminaryInformationSupply/endOfLifePerformance/externalRefDoc/attac

	<p>hment/hashFootprint/@schemeID: [Optional] - note for this position: <i>specify for which system this hash footprint might be used as id entifier (for example HDFS system..)</i> XPath MCIPreliminaryInformationSupply/billOfWaste/ wasteDescriptor/wasteTypeCode/@schemeID: [Required] - note for this position: <i>indicates the adopted classification, a URI is recommended</i> XPath MCIPreliminaryInformationSupply/billOfComponents/ productComponent/refDoc/attachment/hashFootprint/@schemeID: [Optional] - note for this position: <i>specify for which system this hash footprint might be used as id entifier (for example HDFS system..)</i> XPath MCIPreliminaryInformationSupply/billOfWaste/ externalRefDoc/attachment/hashFootprint/@schemeID: [Optional] - note for this position: <i>specify for which system this hash footprint might be used as id entifier (for example HDFS system..)</i> XPath MCIPreliminaryInformationSupply/selfAssertion/ externalRefDoc/attachment/hashFootprint/@schemeID: [Optional] - note for this position: <i>specify for which system this hash footprint might be used as id entifier (for example HDFS system..)</i></p>
season	<p>sale season; defined as: season (1 crt) + year (4 crt) - season: S/S=1 A/W=2 Spring=3 Summer=4 Autumn=5 Winter=6; for more than four seasons use alphabetic sequence: 1st season=A 2nd season=B etc.etc. - base type: string, max length: 15, XPath MCIPreliminaryInformationSupply/billOfComponents/ productComponent/refDoc/season: 0-1 - note for this position: <i>here indicates the season to which the referenced document be longs</i></p>
@sender	<p>qualifier that specifies the Party issuing of the document - base type: boolean, XPath MCIPreliminaryInformationSupply/SRVheader/ senderParty/@sender: [Optional] - note for this position: <i>This attribute is mandatory when the STYLESHEET must be used.</i> XPath MCIPreliminaryInformationSupply/billOfComponents/ productComponent/supplier/@sender: [Optional] - note for this position: <i>This attribute is mandatory when the STYLESHEET must be used</i> XPath MCIPreliminaryInformationSupply/SRVheader/ receiverParty/@sender: [Optional] - note for this position: <i>This attribute is mandatory when the STYLESHEET must be used.</i></p>
serviceRequestedAction	<p>requested service action - base type: string, cod. table: TRK02 http://www.ebiz.enea.it/moda-ml/repository/codelist/draft/gc_TRK02.xml</p>
serviceTicketID	<p>service ticket identifier - base type: string, XPath MCIPreliminaryInformationSupply/SRVheader/ platformServiceReference/serviceTicketID: 0-1 - note for this position: <i>mandatory after activation</i></p>
signatureTypeCode	<p>indicator of existing and type of signature - base type: string,</p>
size	<p>size number of a fashion product (knitwear, clothing, ..) - base type: string, max length: 15,</p>
@standardOwner	<p>standard owner is the organisation that owns and manages the standard specifications (for example Textile exchange or OEKO-TEX) - base type: string,</p>
@storageAction	<p>indicates how to insert the information to which it refers into an archive, also specifying what should happen to the pre-existing information. - base type: string, cod. table: NT312 http://www.ebiz.enea.it/moda-ml/repository/codelist/draft/gc_NT312.xml</p>
street	<p>street and building number identifying a location - base type: string, max length: 80,</p>

subCountry	short name or code of the sub-country entity - base type: string, max length: 9,
subDept	name or code of a department - base type: string, max length: 40,
sustainabilityCharacteristicText	text that describes a single sustainability characteristic (for example a claim). The content of the element must be unique, it might be translated and repeated into more languages (thus no more than one instance for each language). - base type: string, min length: 1, XPath MCIPreliminaryInformationSupply/billOfComponents/productComponent/selfAssertion/sustainabilityCharacteristicText: 0-99 - note for this position: <i>Describe the assertion. It could be a public claim. Only one instance of this element for each different value of 'In' attribute (language)</i> XPath MCIPreliminaryInformationSupply/selfAssertion/sustainabilityCharacteristicText: 0-99 - note for this position: <i>Describe the assertion. It could be a public claim. Only one instance of this element for each different value of 'In' attribute (language)</i>
title	document title - base type: string, XPath MCIPreliminaryInformationSupply/billOfComponents/productComponent/selfAssertion/externalRefDoc/title: 0-unbounded - note for this position: <i>Only one instance of this element for each different value of 'In' attribute (language)</i> XPath MCIPreliminaryInformationSupply/endTimePerformance/externalRefDoc/title: 0-unbounded - note for this position: <i>Only one instance of this element for each different value of 'In' attribute (language)</i> XPath MCIPreliminaryInformationSupply/certificate/title: 0-unbounded - note for this position: <i>Only one instance of this element for each different value of 'In' attribute (language)</i> XPath MCIPreliminaryInformationSupply/billOfComponents/productComponent/certificate/title: 0-unbounded - note for this position: <i>Only one instance of this element for each different value of 'In' attribute (language)</i> XPath MCIPreliminaryInformationSupply/billOfWaste/externalRefDoc/title: 0-unbounded - note for this position: <i>Only one instance of this element for each different value of 'In' attribute (language)</i> XPath MCIPreliminaryInformationSupply/assessmentStudyDocument/title: 0-unbounded - note for this position: <i>Only one instance of this element for each different value of 'In' attribute (language)</i> XPath MCIPreliminaryInformationSupply/selfAssertion/externalRefDoc/title: 0-unbounded - note for this position: <i>Only one instance of this element for each different value of 'In' attribute (language)</i> XPath MCIPreliminaryInformationSupply/expectedUsagePerformance/externalRefDoc/title: 0-unbounded - note for this position: <i>Only one instance of this element for each different value of 'In' attribute (language)</i>
transactionReceipt	transaction receipt on blockchain - base type: string, max length: 1028,
@uid	unique element identifier within the xml document - base type: string,
@um	specification of the unit of measure - base type: string, cod. table: NT7 http://www.ebiz.enea.it/moda-ml/repository/codelist/draft/gc_NT7.xml XPath MCIPreliminaryInformationSupply/expectedUsagePerformance/externalRefDoc/signatureInformation/signatoryParty/geoCoordinates/@um: [Optional] [Default= DEGD] - note for this position: <i>when not specified assume decimal DEGREES</i> XPath MCIPreliminaryInformationSupply/billOfWaste/externalRefDoc/issuerParty/geoCoordinates/@um: [Optional] [Default= DEGD]

- note for this position: *when not specified assume decimal DEGREES*
XPath MCIPreliminaryInformationSupply/billOfComponents/@um: [Required]

- note for this position: *this unit of measure is the reference unit for the quantities of each component; if it is 'piece', each quantity is referred to the quantity of the component needed for 1 piece.*
XPath MCIPreliminaryInformationSupply/billOfComponents/
productComponent/certificate/issuerParty/geoCoordinates/@um: [Optional] [Default= DEGD]

- note for this position: *when not specified assume decimal DEGREES*
XPath MCIPreliminaryInformationSupply/certificate/
certifiedParty/geoCoordinates/@um: [Optional] [Default= DEGD]

- note for this position: *when not specified assume decimal DEGREES*
XPath MCIPreliminaryInformationSupply/selfAssertion/
externalRefDoc/issuerParty/geoCoordinates/@um: [Optional] [Default= DEGD]

- note for this position: *when not specified assume decimal DEGREES*
XPath MCIPreliminaryInformationSupply/selfAssertion/
issuerParty/geoCoordinates/@um: [Optional] [Default= DEGD]

- note for this position: *when not specified assume decimal DEGREES*
XPath MCIPreliminaryInformationSupply/billOfWaste/
facilityLocation/geoCoordinates/@um: [Optional] [Default= DEGD]

- note for this position: *when not specified assume decimal DEGREES*
XPath MCIPreliminaryInformationSupply/billOfComponents/
productComponent/selfAssertion/externalRefDoc/signatureInformation/signatoryParty/geoCoordinates/@um: [Optional] [Default= DEGD]

- note for this position: *when not specified assume decimal DEGREES*
XPath MCIPreliminaryInformationSupply/SRVheader/
receiverParty/geoCoordinates/@um: [Optional] [Default= DEGD]

- note for this position: *when not specified assume decimal DEGREES*
XPath MCIPreliminaryInformationSupply/billOfComponents/
productComponent/certificate/certifiedParty/geoCoordinates/@um: [Optional] [Default= DEGD]

- note for this position: *when not specified assume decimal DEGREES*
XPath MCIPreliminaryInformationSupply/selfAssertion/
externalRefDoc/signatureInformation/signatoryParty/geoCoordinates/@um: [Optional] [Default= DEGD]

- note for this position: *when not specified assume decimal DEGREES*
XPath
MCIPreliminaryInformationSupply/assessmentStudyDocument/reviewerParty/geoCoordinates/@um: [Optional] [Default= DEGD]

- note for this position: *when not specified assume decimal DEGREES*
XPath MCIPreliminaryInformationSupply/billOfComponents/
productComponent/selfAssertion/externalRefDoc/issuerParty/geoCoordinates/@um: [Optional] [Default= DEGD]

- note for this position: *when not specified assume decimal DEGREES*
XPath
MCIPreliminaryInformationSupply/expectedUsagePerformance/externalRefDoc/issuerParty/geoCoordinates/@um: [Optional] [Default= DEGD]

- note for this position: *when not specified assume decimal DEGREES*
XPath
MCIPreliminaryInformationSupply/endOfLifePerformance/externalRefDoc/signatureInformation/signatoryParty/geoCoordinates/@um: [Optional] [Default= DEGD]

- note for this position: *when not specified assume decimal DEGREES*
XPath MCIPreliminaryInformationSupply/billOfComponents/
productComponent/selfAssertion/issuerParty/geoCoordinates/@um: [Optional] [Default= DEGD]

- note for this position: *when not specified assume decimal DEGREES*
XPath MCIPreliminaryInformationSupply/billOfComponents/
productComponent/supplier/geoCoordinates/@um: [Optional] [Default= DEGD]

- note for this position: *when not specified assume decimal DEGREES*
XPath
MCIPreliminaryInformationSupply/assessmentStudyDocument/signatureInformation/signatoryParty/geoCoordinates/@um: [Optional] [Default= DEGD]

- note for this position: *when not specified assume decimal DEGREES*
XPath MCIPreliminaryInformationSupply/certificate/
issuerParty/geoCoordinates/@um: [Optional] [Default= DEGD]

- note for this position: *when not specified assume decimal DEGREES*
XPath MCIPreliminaryInformationSupply/SRVheader/
senderParty/geoCoordinates/@um: [Optional] [Default= DEGD]

- note for this position: *when not specified assume decimal DEGREES*
XPath

	<p>MCIPreliminaryInformationSupply/endOfLifePerformance/externalRefDoc/issue rParty/geoCoordinates/@um: [Optional] [Default= DEGD] - note for this position: <i>when not specified assume decimal DEGREES</i> XPath</p> <p>MCIPreliminaryInformationSupply/assessmentStudyDocument/issuerParty/geo Coordinates/@um: [Optional] [Default= DEGD] - note for this position: <i>when not specified assume decimal DEGREES</i> XPath MCIPreliminaryInformationSupply/billOfWaste/ externalRefDoc/signatureInformation/signatoryParty/geoCoordinates/@um: [O ptional] [Default= DEGD] - note for this position: <i>when not specified assume decimal DEGREES</i></p>
uniqueProductID	<p>Unique product identifier. It identifies the product completely, differentiating any variants, sizes, colors, etc. It should be unique throughout the whole value chain. (It can be the GTIN) - base type: string, max length: 80,</p>
uri	<p>Uniform Resource Identifier (URI) that identifies the external object as an Internet resource - base type: normalizedString, XPath MCIPreliminaryInformationSupply/billOfWaste/ externalRefDoc/attachment/blockChainReference/uri: 1-1 - note for this position: <i>reference to the used blockchain (example: url https://etherscan.io/ of ethereum)</i> XPath MCIPreliminaryInformationSupply/billOfComponents/ productComponent/certificate/attachment/blockChainReference/uri: 1-1 - note for this position: <i>reference to the used blockchain (example: url https://etherscan.io/ of ethereum)</i> XPath MCIPreliminaryInformationSupply/billOfComponents/ productComponent/selfAssertion/externalRefDoc/attachment/blockChainReference/uri: 1-1 - note for this position: <i>reference to the used blockchain (example: url https://etherscan.io/ of ethereum)</i> XPath MCIPreliminaryInformationSupply/selfAssertion/ externalRefDoc/attachment/blockChainReference/uri: 1-1 - note for this position: <i>reference to the used blockchain (example: url https://etherscan.io/ of ethereum)</i> XPath MCIPreliminaryInformationSupply/expectedUsagePerformance/externalRefDoc/ attachment/blockChainReference/uri: 1-1 - note for this position: <i>reference to the used blockchain (example: url https://etherscan.io/ of ethereum)</i> XPath MCIPreliminaryInformationSupply/assessmentStudyDocument/attachment/blockChainReference/uri: 1-1 - note for this position: <i>reference to the used blockchain (example: url https://etherscan.io/ of ethereum)</i> XPath MCIPreliminaryInformationSupply/endOfLifePerformance/externalRefDoc/attachment/blockChainReference/uri: 1-1 - note for this position: <i>reference to the used blockchain (example: url https://etherscan.io/ of ethereum)</i> XPath MCIPreliminaryInformationSupply/certificate/ attachment/blockChainReference/uri: 1-1 - note for this position: <i>reference to the used blockchain (example: url https://etherscan.io/ of ethereum)</i> XPath MCIPreliminaryInformationSupply/billOfComponents/ productComponent/refDoc/attachment/blockChainReference/uri: 1-1 - note for this position: <i>reference to the used blockchain (example: url https://etherscan.io/ of ethereum)</i></p>
@useProfile	<p>use profile to which the present document is compliant if it was agreed by the parties. It is suggested a URI with reference to the firms or the URL of the profile. - base type: string,</p>
@validationMethod	<p>type of method used to obtain the quantity to which it refers. For example, it indicates whether it was measured in the field, estimated indirectly, approved by an expert or taken from the literature - base type: string, cod. table: NT329 http://www.ebiz.enea.it/moda-ml/repository/codelist/draft/gc_NT329.xml</p>

validityEnd	date by which the validity ends, according to one of the patterns YYYY-MM-DD, YYYY-MM-DD:HH-MM or YYYY-WW. - base type: string,
validityExtensionDate	end date of validity resulting from extension, according to one of the patterns YYYY-MM-DD, YYYY-MM-DD:HH-MM or YYYY-WW. - base type: string,
validityStart	date by which the validity starts, according to one of the patterns YYYY-MM-DD, YYYY-MM-DD:HH-MM or YYYY-WW. - base type: string,
variantCode	Code of variant used for fashion product. - base type: string,
variantType	Type of variant used for fashion product (examples: 'treatment', 'washing type', 'size class',...) - base type: string,
@version	Dictionary version from which the instance has been created - base type: string, cod. table: NT100 http://www.ebiz.enea.it/moda-ml/repository/codelist/draft/gc_NT100.xml
wasteFinalTreatmentType	indicates the final treatment of the waste (in whole or in part) - base type: string, cod. table: NT316 http://www.ebiz.enea.it/moda-ml/repository/codelist/draft/gc_NT316.xml
wasteTypeCode	indicates a code of the type of waste according to a classification that can be of various kinds, usually of greater detail than the EWC one; the classification is identified by SchemeID - base type: string,
xGeoCoord	geographical coordinate x , corresponding to latitude - base type: decimal,
year	reference year - base type: integer, min inclusive: 1800, max inclusive: 2100, XPath MCIPreliminaryInformationSupply/billOfWaste/year: 0-1 - note for this position: <i>when filled indicates that collected figures are related to a specific year</i> XPath MCIPreliminaryInformationSupply/assessmentStudyDocument/year: 0-1 - note for this position: <i>indicate the year to whom the study is referred</i>
yGeoCoord	geographical coordinate y , corresponding to longitude - base type: decimal,
zGeoCoord	geographical coordinate z , corresponding to altitude - base type: decimal, XPath MCIPreliminaryInformationSupply/assessmentStudyDocument/signatureInformation/signatoryParty/geoCoordinates/zGeoCoord: 0-1 - note for this position: <i>altitude might be omitted</i> XPath MCIPreliminaryInformationSupply/selfAssertion/externalRefDoc/issuerParty/geoCoordinates/zGeoCoord: 0-1 - note for this position: <i>altitude might be omitted</i> XPath MCIPreliminaryInformationSupply/certificate/issuerParty/geoCoordinates/zGeoCoord: 0-1 - note for this position: <i>altitude might be omitted</i> XPath MCIPreliminaryInformationSupply/selfAssertion/issuerParty/geoCoordinates/zGeoCoord: 0-1 - note for this position: <i>altitude might be omitted</i> XPath MCIPreliminaryInformationSupply/billOfComponents/productComponent/certificate/certifiedParty/geoCoordinates/zGeoCoord: 0-1 - note for this position: <i>altitude might be omitted</i> XPath MCIPreliminaryInformationSupply/billOfWaste/facilityLocation/geoCoordinates/zGeoCoord: 0-1 - note for this position: <i>altitude might be omitted</i> XPath MCIPreliminaryInformationSupply/endOfLifePerformance/externalRefDoc/issuerParty/geoCoordinates/zGeoCoord: 0-1

	<p>- note for this position: <i>altitude might be omitted</i> XPath MCIPreliminaryInformationSupply/SRVheader/ senderParty/geoCoordinates/zGeoCoord: 0-1</p> <p>- note for this position: <i>altitude might be omitted</i> XPath MCIPreliminaryInformationSupply/certificate/ certifiedParty/geoCoordinates/zGeoCoord: 0-1</p> <p>- note for this position: <i>altitude might be omitted</i> XPath MCIPreliminaryInformationSupply/billOfWaste/ externalRefDoc/issuerParty/geoCoordinates/zGeoCoord: 0-1</p> <p>- note for this position: <i>altitude might be omitted</i> XPath MCIPreliminaryInformationSupply/billOfComponents/ productComponent/selfAssertion/externalRefDoc/signatureInformation/signator yParty/geoCoordinates/zGeoCoord: 0-1</p> <p>- note for this position: <i>altitude might be omitted</i> XPath MCIPreliminaryInformationSupply/expectedUsagePerformance/externalRefDoc /issuerParty/geoCoordinates/zGeoCoord: 0-1</p> <p>- note for this position: <i>altitude might be omitted</i> XPath MCIPreliminaryInformationSupply/billOfComponents/ productComponent/selfAssertion/issuerParty/geoCoordinates/zGeoCoord: 0-1</p> <p>- note for this position: <i>altitude might be omitted</i> XPath MCIPreliminaryInformationSupply/billOfComponents/ productComponent/certificate/issuerParty/geoCoordinates/zGeoCoord: 0-1</p> <p>- note for this position: <i>altitude might be omitted</i> XPath MCIPreliminaryInformationSupply/SRVheader/ receiverParty/geoCoordinates/zGeoCoord: 0-1</p> <p>- note for this position: <i>altitude might be omitted</i> XPath MCIPreliminaryInformationSupply/expectedUsagePerformance/externalRefDoc /signatureInformation/signatoryParty/geoCoordinates/zGeoCoord: 0-1</p> <p>- note for this position: <i>altitude might be omitted</i> XPath MCIPreliminaryInformationSupply/assessmentStudyDocument/reviewerParty/g eoCoordinates/zGeoCoord: 0-1</p> <p>- note for this position: <i>altitude might be omitted</i> XPath MCIPreliminaryInformationSupply/endTimePerformance/externalRefDoc/sign atureInformation/signatoryParty/geoCoordinates/zGeoCoord: 0-1</p> <p>- note for this position: <i>altitude might be omitted</i> XPath MCIPreliminaryInformationSupply/billOfWaste/ externalRefDoc/signatureInformation/signatoryParty/geoCoordinates/zGeoCoo rd: 0-1</p> <p>- note for this position: <i>altitude might be omitted</i> XPath MCIPreliminaryInformationSupply/billOfComponents/ productComponent/selfAssertion/externalRefDoc/issuerParty/geoCoordinates/ zGeoCoord: 0-1</p> <p>- note for this position: <i>altitude might be omitted</i> XPath MCIPreliminaryInformationSupply/assessmentStudyDocument/issuerParty/geo Coordinates/zGeoCoord: 0-1</p> <p>- note for this position: <i>altitude might be omitted</i> XPath MCIPreliminaryInformationSupply/selfAssertion/ externalRefDoc/signatureInformation/signatoryParty/geoCoordinates/zGeoCoo rd: 0-1</p> <p>- note for this position: <i>altitude might be omitted</i> XPath MCIPreliminaryInformationSupply/billOfComponents/ productComponent/supplier/geoCoordinates/zGeoCoord: 0-1</p> <p>- note for this position: <i>altitude might be omitted</i></p>
--	---

2.3 Suggested best practices

MCIPreliminaryInformationSupply/billOfWaste/facilityLocation (data relating to a place of a facility (indicate at least element location or address, city and country))

Usually indicate the reference year for the collected figures. On the other side productReferenceQty should be ignored when figures are related to a facility.

**MCIPreliminaryInformationSupply/billOfComponents/
productComponent/refDoc/docID** (identification number of the referenced document)

numberingOrg indicates the role that produced the document identifier (it is allowed to declare two different ones -e.g. customer and supplier - with two docID with different numberingOrg

**MCIPreliminaryInformationSupply/billOfComponents/
productComponent/refDoc/attachment/externalReference/mimeCode** (mime type of the external object)

Use coding from IANA <http://www.iana.org/assignments/media-types/media-types.xml>

MCIPreliminaryInformationSupply/expectedUsagePerformance/externalRefDoc/attachment/externalReference/mimeCode (mime type of the external object)

Use coding from IANA <http://www.iana.org/assignments/media-types/media-types.xml>

MCIPreliminaryInformationSupply/endOfLifePerformance/externalRefDoc/attachment/externalReference/mimeCode (mime type of the external object)

Use coding from IANA <http://www.iana.org/assignments/media-types/media-types.xml>

**MCIPreliminaryInformationSupply/certificate/
attachment/externalReference/mimeCode** (mime type of the external object)

Use coding from IANA <http://www.iana.org/assignments/media-types/media-types.xml>

**MCIPreliminaryInformationSupply/billOfComponents/
productComponent/selfAssertion/externalRefDoc/attachment/externalReference/mimeCode** (mime type of the external object)

Use coding from IANA <http://www.iana.org/assignments/media-types/media-types.xml>

**MCIPreliminaryInformationSupply/billOfWaste/
externalRefDoc/attachment/externalReference/mimeCode** (mime type of the external object)

Use coding from IANA <http://www.iana.org/assignments/media-types/media-types.xml>

**MCIPreliminaryInformationSupply/selfAssertion/
externalRefDoc/attachment/externalReference/mimeCode** (mime type of the external object)

Use coding from IANA <http://www.iana.org/assignments/media-types/media-types.xml>

**MCIPreliminaryInformationSupply/billOfComponents/
productComponent/certificate/attachment/externalReference/mimeCode** (mime type of the external object)

Use coding from IANA <http://www.iana.org/assignments/media-types/media-types.xml>

MCIPreliminaryInformationSupply/assessmentStudyDocument/attachment/externalReference/mimeCode (mime type of the external object)

Use coding from IANA <http://www.iana.org/assignments/media-types/media-types.xml>

MCIPreliminaryInformationSupply/billOfWaste/productReferenceQty (net reference quantity of the product)

Might be ignored when facilityLocation is filled

2.4 Enumeration tables

List of enumeration tables used in the XML document. You can find all the tables with the corresponding codes at:
<http://www.ebiz.enea.it/eBIZ/imple/eBIZTCU-draft.asp?lingua=en&pag=6>

NT100 - eBIZ TCFUpstream version
NT2 - third party qualifier
NT201 - entity type
NT29 - format of a date
NT3 - issuer of the identifier (or identification system) of a location.
NT311 - information disclosure level
NT312 - storage action
NT313 - status of the document
NT316 - waste final treatment type
NT323 - category of the object of a declaration
NT329 - type of validation method of the value
NT333 - type of hashing algorithm
NT6 - coding system owner/issuer
NT60 - language, codes from ISO 639-1 (subset)
NT7 - unit of measure
T10 - ISO3166 - Country
T19 - fibre type
T21 - type of document
T302 - type of object
T306 - material circularity attribute
T307 - recycling process method
T44 - additional code type
T48 - garment part type
TRK01 - list of available services
TRK02 - list of services functions

ACKNOWLEDGEMENT



This action is part of the TRICK project, which has received funding from Horizon 2020 research and innovation programme under grant agreement No. 958352 of the European Union.

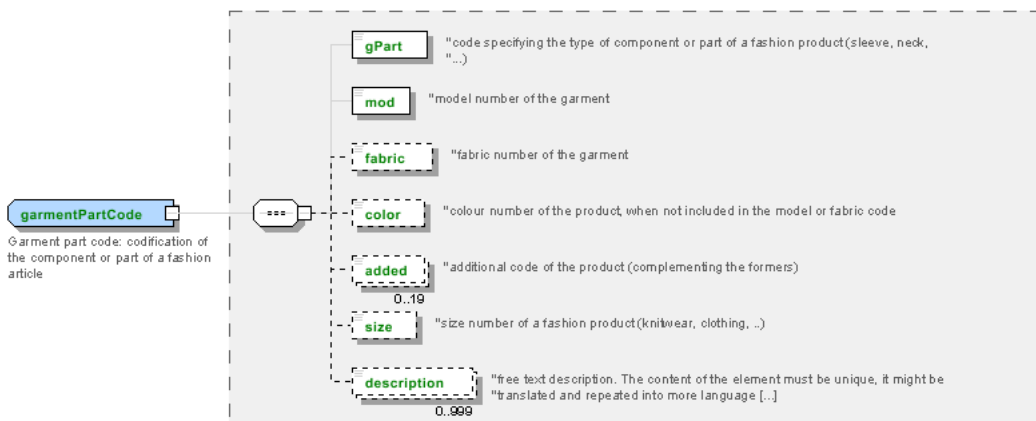
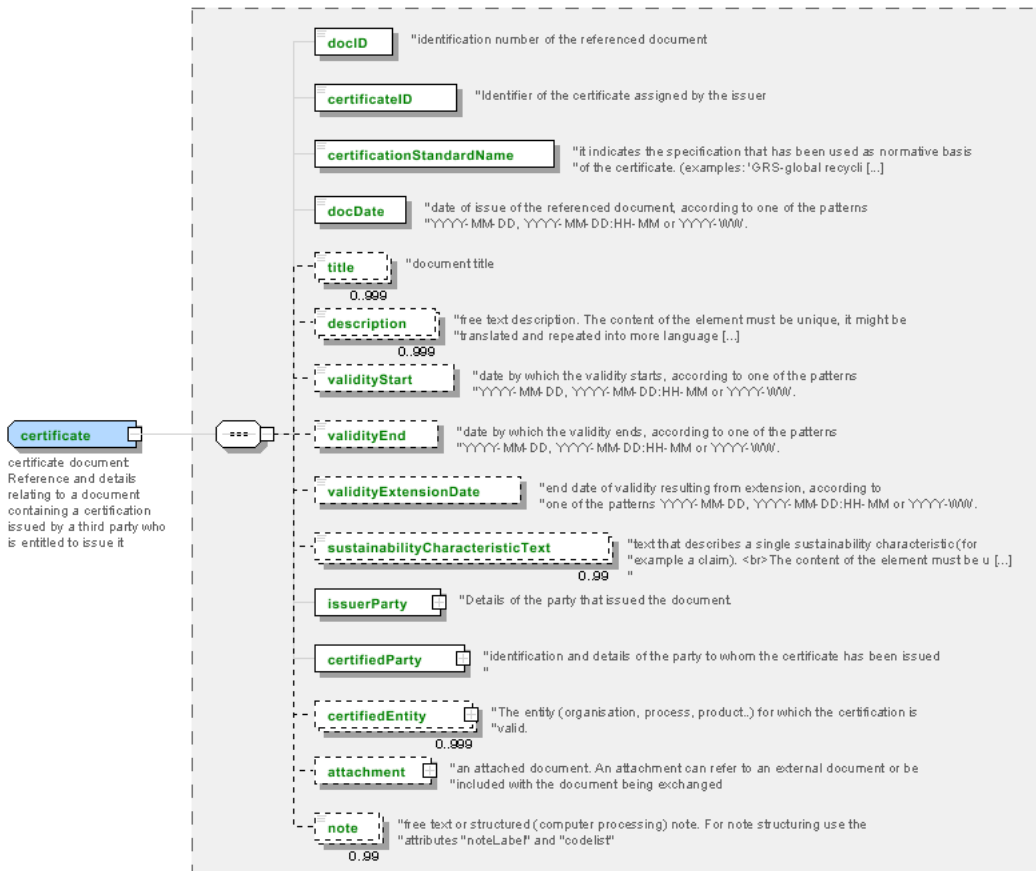
DISCLAIMER

The content of this document represents the views of the authors only and is their sole responsibility; it cannot be considered to reflect the views of the European Commission or any other body of the European Union.

The European Commission does not accept any responsibility for use that may be made of the information it contains.

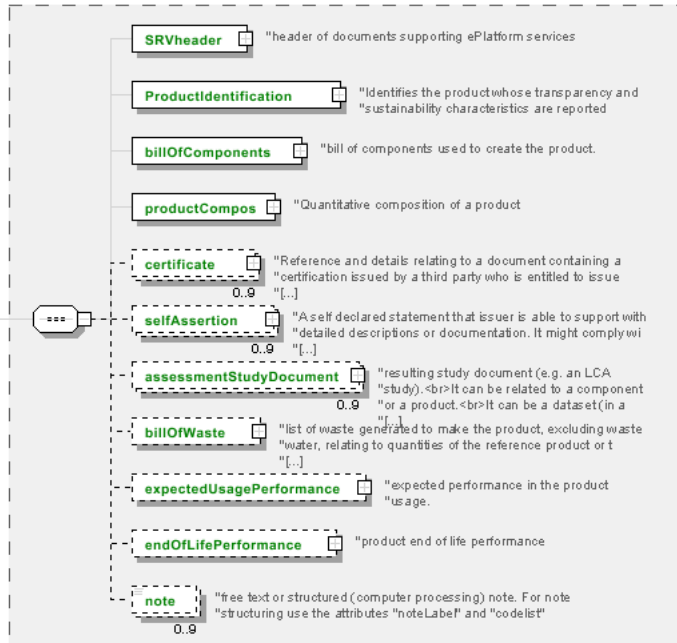
Annex A

Representative images of the principal complex elements' structure.



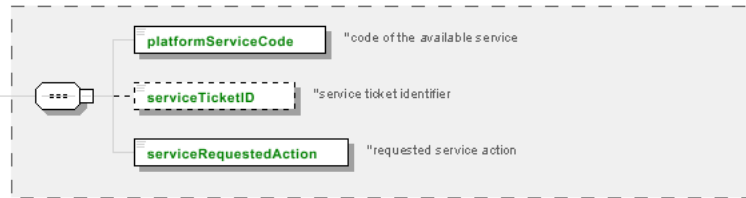
MCI Preliminary Information Supply

MCI Preliminary Information Supply: preliminary information supplying for data collection for the Material Circularity (MCI methodology) assessment of the textile product. Some information might be initially omitted in respect of the MCI Information Supply document



platformServiceReference

platform service reference: service instruction and reference



productComponent

product component: descriptor of one of the elements used to create the product. It indicates the codes of the component, the quantity for final product unit, supplier and any documentation

