



<http://www.ebiz-tcf.eu>

DRAFT

IMPLEMENTATION GUIDE

TRANSACTION "ACCESSORY DESPATCH REQUEST"

Version: draft

Date of release: 17/5/2019

Document code: G038

technical Documentation: <http://www.ebiz.enea.it>

XML Schemas repository: <http://www.ebiz.enea.it/moda-ml/repository/schema/draft/default.asp>

Guides repository: <http://www.ebiz.enea.it/moda-ml/repository/guide/draft/default.asp>

Guide filename: G038-eBIZ-AccessoryDespatchRequest.pdf

0. PREMISE

This document contains a proposal for the updating and extension of eBIZ specifications starting from the eBIZ version released as CEN CWA 16667 in 2013. Under the name of 'Draft version' it is reported the result of an extensive work of analysis and consultation aimed at developing and maintaining eBIZ specifications.

In particular, the content of this proposal is the result of various activities, mainly those carried out within the framework of the **eBIZ 4.0 project** funded by the European Commission, call COS-DESIGN-2015-3-06, topic COS-2015-DESIGN-2.

The technical contents are backwards compatible with the latest official published version.

1. BUSINESS DESCRIPTION

1.1 Scope

The present guide has been issued to assist the companies of the Textile-Clothing sector in the implementation of the standard XML document type "GARMENT ACCESSORY DESPATCH REQUEST", providing all the instruction required for its use in any context of e-commerce between Apparel or Fabric Producers and Garment accessory Producers (Supplier) or Apparel subcontractors.

All the rules required for the construction and validation of the document are embedded into the specific XML-Schema, which is detailed in section "Implementation guide".

1.2 Generalities

The message is issued to plan the delivery of the garment accessories that are in the "ready for despatch" status (see the document "Order Status").

This document enables the Buyer to modify some date of its Order (delivery dates and places)

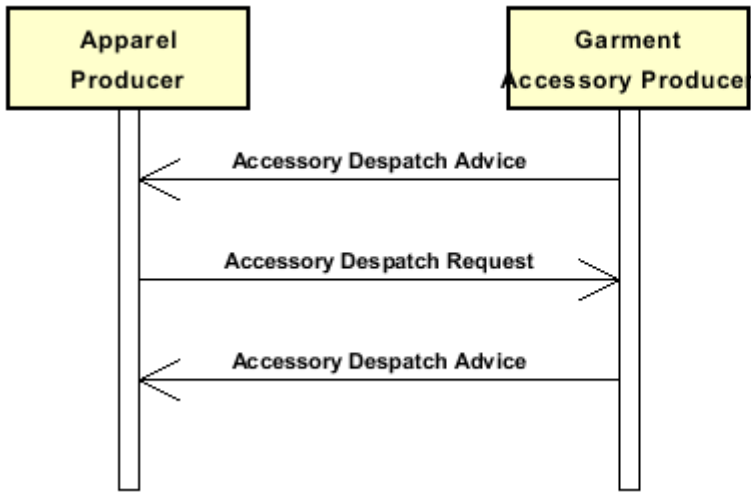
This document can be used:

- as a standard despatch request
- as a despatch request that, at the same time, cancels a previous request referenced there in

Each document item must correspond with a well defined garment accessory article (article + pattern + color) and for each item is possible to reference the Order line that is delivered.

1.3. Possible scenario

Delivery of garment accessories



2. IMPLEMENTATION GUIDE

2.1 General structure of XML document

All the business data that can be exchanged through this class of documents are shown in the following "document structure", that provides a simplified vision of the Schema.

In particular:

- the two numbers following each element define its "cardinality" (minimum and maximum number of occurrences); the minimum equal zero indicates that the element is optional, the minimum greater than zero indicates that is mandatory;
- the bold character denotes the complex elements (aggregates of simple elements) that were built for the sake of functionality and re-usability of some complex informations sets. The child elements in each parent element are easily spotted as "indented";
- the symbol "@" denotes an attribute of the preceding element; here "the usage indicator (optional, required, ...)" is shown in square brackets.

Structure

ACSDesRequest

```
@TRtype [Optional] [Default= STD]
@msgfunction [Optional] [Default= OR]
@version [Optional] [Default= draft]
@useProfile [Optional]
| TRheader 1-1
| | msgN 1-1
| | - choose -
| | msgID 0-1
| | - or -
| | docID 0-1
| | @numberingOrg [Optional]
| | - end choose -
| | msgDate 1-1
| | @dateForm [Optional]
| | refDoc 0-9
| | @docType [Required]
| | | docID 1-2
| | | @numberingOrg [Optional]
| | | docDate 0-1
| | | @dateForm [Optional]
| | | season 0-1
| | | @numberingOrg [Optional]
| | | @codeList [Optional]
| | | @listName [Optional]
| | | @listVersion [Optional]
| | | itemID 0-1
| | | attachment 0-1
| | | @uid [Optional]
| | | | fileName 0-1
| | | | @numberingOrg [Optional]
| | | | binaryObject 0-1
| | | | @format [Optional]
| | | | @mime [Optional]
| | | | @encoding [Optional]
| | | | @characterSet [Optional]
| | | | externalReference 0-99
| | | | | uri 1-1
| | | | | @isURL [Optional] [Default= true]
| | | | | mimeTypeCode 0-1
| | | | | formatCode 0-1
```

			encodingCode 0-1
			characterSetCode 0-1
			buyer 1-1
			@logo [Optional]
			@sender [Optional]
			id 1-1
			@numberingOrg [Optional]
			additionalIdentifier 0-9
			@numberingOrg [Optional]
			@idQualifier [Optional]
			legalName 0-1
			dept 0-1
			subDept 0-1
			person 0-1
			@email [Optional]
			@phone [Optional]
			@fax [Optional]
			street 0-1
			city 0-1
			subCountry 0-1
			country 0-1
			postCode 0-1
			supplier 1-1
			@logo [Optional]
			@sender [Optional]
			id 1-1
			@numberingOrg [Optional]
			additionalIdentifier 0-9
			@numberingOrg [Optional]
			@idQualifier [Optional]
			legalName 0-1
			dept 0-1
			subDept 0-1
			person 0-1
			@email [Optional]
			@phone [Optional]
			@fax [Optional]
			street 0-1
			city 0-1
			subCountry 0-1
			country 0-1
			postCode 0-1
			thirdParty 0-5
			@VAT [Optional]
			@role [Required]
			@sender [Optional]
			id 1-1
			@numberingOrg [Optional]
			legalName 0-1
			dept 0-1
			subDept 0-1
			person 0-1
			@email [Optional]
			@phone [Optional]
			@fax [Optional]
			street 0-1
			city 0-1
			subCountry 0-1
			country 0-1
			postCode 0-1
			note 0-99

| | @numberingOrg [Optional]
| | @codeList [Optional]
| | @noteLabel [Optional]

| **trade 0-1**

- choose -

| | incoTermText 1-1

- or -

| | incoTerm 1-1

- end choose -

| | location 0-1

| | @LRI [Optional]

| **shiplInfo 0-1**

| | **transInfo 0-9**

| | @transReason [Optional]

| | @progr [Optional]

| | | transMode 1-1

| | | carrier 0-1

| | | deliveryPlace 0-1

| | | grossWeight 0-1

| | | | @um [Required]

| | | netWeight 0-1

| | | | @um [Required]

| | | transMeans 0-1

| | | transCondition 0-3

| | | transConditionText 0-1

| | | despatchPlace 0-1

| | | despatchDate 0-1

| | | | @dateForm [Optional]

| | | delEffectiveDate 0-1

| | | | @dateForm [Optional]

| | delEffectiveDate 0-1

| | | @dateForm [Optional]

| | **packages 0-99**

| | @packageLevel [Optional]

- choose -

| | | packageText 1-1

- or -

| | | package 1-1

- end choose -

| | | packageModelCode 0-1

| | | | @numberingOrg [Optional]

| | | description 0-unbounded

| | | | @ln [Optional]

| | | **packageDim 0-1**

| | | | length 1-1

| | | | | @um [Required]

| | | | width 0-1

| | | | | @um [Required]

| | | | height 0-1

| | | | | @um [Required]

| | | **handlingChar 0-1**

- choose -

| | | **yarnPack 0-1**

| | | | **yarnReel 1-1**

| | | | | @reelType [Required]

| | | | | @reelMat [Optional]

| | | | | yarnReelD 0-1

| | | | | | @um [Required]

| | | | | yarnReelH 0-1

```

| | | | | @um [Required]
| | | | | yarnConeAngle 0-1
| | | | | yarnReelQty 0-2
| | | | | @um [Required]
| | | | | label 0-1
| | | | | labelWrit 0-1
| | | | | yarnInWrap 0-1
| | | | | yarnReelWrap 1-1
| | | | | label 0-1
| | | | | labelWrit 0-1
| | | | | - choose -
| | | | | | yarnOutWrapText 0-1
| | | | | - or -
| | | | | | yarnOutWrap 0-1
| | | | | - end choose -
| | | | | - or -
| | | | | piecePack 0-1
| | | | | - choose -
| | | | | | piecePackText 1-1
| | | | | - or -
| | | | | | pieceInnWrap1 1-1
| | | | | | pieceInnWrap2 0-1
| | | | | | pieceOutWrap 0-1
| | | | | - end choose -
| | | | | - or -
| | | | | acsPack 0-1
| | | | | - choose -
| | | | | | acsPackCode 1-1
| | | | | - or -
| | | | | | acsPackText 1-1
| | | | | - end choose -
| | | | | - or -
| | | | | garPack 0-1
| | | | | - choose -
| | | | | | garPackCode 1-1
| | | | | - or -
| | | | | | garPackText 1-1
| | | | | - end choose -
| | | | | - end choose -
| | | | | sortableIndicator 0-1
| | | | | stackabilityLevel 0-1
| | | | | handlingType 0-1
| | | | | @In [Optional]
| | | | | volume 0-1
| | | | | @um [Required]
| | | | | netWeight 0-1
| | | | | @um [Required]
| | | | | grossWeight 0-1
| | | | | @um [Required]
| | | | | note 0-99
| | | | | @numberingOrg [Optional]
| | | | | @codeList [Optional]
| | | | | @noteLabel [Optional]
| | | | | itemsPerPackage 0-1
| | | | | @um [Required]
| | | | | minItemsPerPackage 0-1
| | | | | @um [Required]
| | | | | fillingCriterion 0-9
| | | | | @progr [Optional]
| | | | | packageQty 0-1
| | | | | packageN 0-unbounded

```

```

| | | @numberingOrg [Optional]
| | | @packageContainerN [Optional]
| | | EPCList 0-1
| | | | EPC 1-unbounded
| | | | @numberingOrg [Optional]
| | | | @TID [Optional]
| | | actualPackageUnit 0-unbounded
| | | | @packageLevel [Optional]
| | | | | packageIdentification 1-1
| | | | | | packageN 1-1
| | | | | | @numberingOrg [Optional]
| | | | | | @packageContainerN [Optional]
| | | | | | serialN 0-9
| | | | | | @numberingOrg [Optional]
| | | | | | @idQualifier [Optional]
| | | - choose -
| | | | packageText 0-1
| | | - or -
| | | | package 0-1
| | | - end choose -
| | | | packageModelCode 0-1
| | | | | @numberingOrg [Optional]
| | | | | volume 0-1
| | | | | | @um [Required]
| | | | | netWeight 0-1
| | | | | | @um [Required]
| | | | | grossWeight 0-1
| | | | | | @um [Required]
| | | | | packageDim 0-1
| | | | | | length 1-1
| | | | | | | @um [Required]
| | | | | | width 0-1
| | | | | | | @um [Required]
| | | | | | height 0-1
| | | | | | | @um [Required]
| | | | actualItemsPerPackage 0-1
| | | | packagesList 0-1
| | | | | packageIdentification 1-unbounded
| | | | | | packageN 1-1
| | | | | | | @numberingOrg [Optional]
| | | | | | | @packageContainerN [Optional]
| | | | | | serialN 0-9
| | | | | | | @numberingOrg [Optional]
| | | | | | | @idQualifier [Optional]
| | | | | itemsList 0-1
| | | | | | qualityLevel 0-1
| | | | | | | @numberingOrg [Optional]
| | | | | | | @codeList [Optional]
| | | | | | | @listName [Optional]
| | | | | | | @listVersion [Optional]
| | | | | | itemIdentification 1-unbounded
| | | | | | | serialN 1-9
| | | | | | | | @numberingOrg [Optional]
| | | | | | | | @idQualifier [Optional]
| | | | note 0-99
| | | | | @numberingOrg [Optional]
| | | | | @codeList [Optional]
| | | | | @noteLabel [Optional]

```

| **acsPack 0-1**

- choose -

| | acsPackCode 1-1
 - or -
 | | acsPackText 1-1
 - end choose -

| **ARbody 1-1**

| | **ARitem 1-unbounded**
 | | *@extinction [Optional]*
 | | lineN 1-1
 | | *@VAT [Optional]*
 | | lineID 0-1
 | | **refDoc 0-9**
 | | *@docType [Required]*
 | | docID 1-2
 | | *@numberingOrg [Optional]*
 | | docDate 0-1
 | | *@dateForm [Optional]*
 | | season 0-1
 | | *@numberingOrg [Optional]*
 | | *@codeList [Optional]*
 | | *@listName [Optional]*
 | | *@listVersion [Optional]*
 | | itemID 0-1
 | | **attachment 0-1**
 | | *@uid [Optional]*
 | | fileName 0-1
 | | *@numberingOrg [Optional]*
 | | binaryObject 0-1
 | | *@format [Optional]*
 | | *@mime [Optional]*
 | | *@encoding [Optional]*
 | | *@characterSet [Optional]*
 | | **externalReference 0-99**
 | | uri 1-1
 | | *@isURL [Optional] [Default= true]*
 | | mimeTypeCode 0-1
 | | formatCode 0-1
 | | encodingCode 0-1
 | | characterSetCode 0-1
 | | **acsCode 1-2**
 | | *@numberingOrg [Optional]*
 | | art 1-1
 | | *@numberingOrg [Optional]*
 | | *@codeList [Optional]*
 | | *@listName [Optional]*
 | | *@listVersion [Optional]*
 | | pattern 0-1
 | | *@numberingOrg [Optional]*
 | | *@codeList [Optional]*
 | | *@listName [Optional]*
 | | *@listVersion [Optional]*
 | | color 0-1
 | | *@numberingOrg [Optional]*
 | | *@codeList [Optional]*
 | | *@listName [Optional]*
 | | *@listVersion [Optional]*
 | | added 0-9
 | | *@numberingOrg [Optional]*
 | | *@addType [Optional]*
 | | description 0-unbounded
 | | *@ln [Optional]*

acsName 0-1
 qty 1-2
 @um [Required]
csRange 0-99
 @numberingOrg [Optional]
 @sizeSystemNat [Optional]
 @sizeSystemSeg [Optional]
 @sizeSystemBase [Optional]
 @sizeSystemID [Optional]
 | color 0-1
 | @numberingOrg [Optional]
 | @codeList [Optional]
 | @listName [Optional]
 | @listVersion [Optional]
garmentVariant 0-9
 | variantType 1-1
 | @numberingOrg [Optional]
 | @codeList [Optional]
 | @listName [Optional]
 | @listVersion [Optional]
 | variantCode 1-1
 | @numberingOrg [Optional]
 | @codeList [Optional]
 | @listName [Optional]
 | @listVersion [Optional]
 drop 0-1
 @codeList [Optional]
sizeMatrix 1-1
 | **sizeRow 1-99**
 | | additionalComponentCode 0-9
 | | @numberingOrg [Optional]
 | | @codeList [Optional]
 | | @listName [Optional]
 | | @listVersion [Optional]
 | | drop 0-1
 | | @codeList [Optional]
 | | size 1-1
 | | @codeList [Optional]
 | | qty 0-1
 | | @um [Required]
 | | **itemsList 0-1**
 | | | qualityLevel 0-1
 | | | @numberingOrg [Optional]
 | | | @codeList [Optional]
 | | | @listName [Optional]
 | | | @listVersion [Optional]
 | | | **itemIdentification 1-unbounded**
 | | | | serialN 1-9
 | | | | @numberingOrg [Optional]
 | | | | @idQualifier [Optional]
 lotN 0-2
 @numberingOrg [Optional]
thirdParty 0-1
 @VAT [Optional]
 @role [Required]
 @sender [Optional]
 | id 1-1
 | @numberingOrg [Optional]
 legalName 0-1
 dept 0-1
 subDept 0-1

```

| | | | person 0-1
| | | |   @email [Optional]
| | | |   @phone [Optional]
| | | |   @fax [Optional]
| | | | street 0-1
| | | | city 0-1
| | | | subCountry 0-1
| | | | country 0-1
| | | | postCode 0-1
| | | | shipInfo 0-1
| | | |   transInfo 0-9
| | | |     @transReason [Optional]
| | | |     @progr [Optional]
| | | |       transMode 1-1
| | | |       carrier 0-1
| | | |       deliveryPlace 0-1
| | | |       grossWeight 0-1
| | | |       @um [Required]
| | | |       netWeight 0-1
| | | |       @um [Required]
| | | |       transMeans 0-1
| | | |       transCondition 0-3
| | | |       transConditionText 0-1
| | | |       despatchPlace 0-1
| | | |       despatchDate 0-1
| | | |       @dateForm [Optional]
| | | |       delEffectiveDate 0-1
| | | |       @dateForm [Optional]
| | | | delEffectiveDate 0-1
| | | |   @dateForm [Optional]
| | | |   packages 0-99
| | | |   @packageLevel [Optional]
| | | | - choose -
| | | |   | packageText 1-1
| | | | - or -
| | | |   | package 1-1
| | | | - end choose -
| | | |   packageModelCode 0-1
| | | |   @numberingOrg [Optional]
| | | |   description 0-unbounded
| | | |   @ln [Optional]
| | | |   packageDim 0-1
| | | |     length 1-1
| | | |     @um [Required]
| | | |     width 0-1
| | | |     @um [Required]
| | | |     height 0-1
| | | |     @um [Required]
| | | |   handlingChar 0-1
| | | | - choose -
| | | |   yarnPack 0-1
| | | |     yarnReel 1-1
| | | |       @reelType [Required]
| | | |       @reelMat [Optional]
| | | |       yarnReelD 0-1
| | | |       @um [Required]
| | | |       yarnReelH 0-1
| | | |       @um [Required]
| | | |       yarnConeAngle 0-1
| | | |       yarnReelQty 0-2
| | | |       @um [Required]

```

```

| | | | | | | | | label 0-1
| | | | | | | | | labelWrit 0-1
| | | | | | | | | yarnInWrap 0-1
| | | | | | | | | yarnReelWrap 1-1
| | | | | | | | | label 0-1
| | | | | | | | | labelWrit 0-1
| | | | | | | | | - choose -
| | | | | | | | | yarnOutWrapText 0-1
| | | | | | | | | - or -
| | | | | | | | | yarnOutWrap 0-1
| | | | | | | | | - end choose -
| | | | | | | | | - or -
| | | | | | | | | piecePack 0-1
| | | | | | | | | - choose -
| | | | | | | | | piecePackText 1-1
| | | | | | | | | - or -
| | | | | | | | | pieceInnWrap1 1-1
| | | | | | | | | pieceInnWrap2 0-1
| | | | | | | | | pieceOutWrap 0-1
| | | | | | | | | - end choose -
| | | | | | | | | - or -
| | | | | | | | | acsPack 0-1
| | | | | | | | | - choose -
| | | | | | | | | acsPackCode 1-1
| | | | | | | | | - or -
| | | | | | | | | acsPackText 1-1
| | | | | | | | | - end choose -
| | | | | | | | | - or -
| | | | | | | | | garPack 0-1
| | | | | | | | | - choose -
| | | | | | | | | garPackCode 1-1
| | | | | | | | | - or -
| | | | | | | | | garPackText 1-1
| | | | | | | | | - end choose -
| | | | | | | | | - end choose -
| | | | | | | | | sortableIndicator 0-1
| | | | | | | | | stackabilityLevel 0-1
| | | | | | | | | handlingType 0-1
| | | | | | | | | @In [Optional]
| | | | | | | | | volume 0-1
| | | | | | | | | @um [Required]
| | | | | | | | | netWeight 0-1
| | | | | | | | | @um [Required]
| | | | | | | | | grossWeight 0-1
| | | | | | | | | @um [Required]
| | | | | | | | | note 0-99
| | | | | | | | | @numberingOrg [Optional]
| | | | | | | | | @codeList [Optional]
| | | | | | | | | @noteLabel [Optional]
| | | | | | | | | itemsPerPackage 0-1
| | | | | | | | | @um [Required]
| | | | | | | | | minItemsPerPackage 0-1
| | | | | | | | | @um [Required]
| | | | | | | | | fillingCriterion 0-9
| | | | | | | | | @progr [Optional]
| | | | | | | | | packageQty 0-1
| | | | | | | | | packageN 0-unbounded
| | | | | | | | | @numberingOrg [Optional]
| | | | | | | | | @packageContainerN [Optional]
| | | | | | | | | EPCList 0-1
| | | | | | | | | EPC 1-unbounded

```

```

| | | | | @numberingOrg [Optional]
| | | | | @TID [Optional]
| | | | | actualPackageUnit 0-unbounded
| | | | | @packageLevel [Optional]
| | | | | | packageIdentification 1-1
| | | | | | | packageN 1-1
| | | | | | | @numberingOrg [Optional]
| | | | | | | @packageContainerN [Optional]
| | | | | | | serialN 0-9
| | | | | | | @numberingOrg [Optional]
| | | | | | | @idQualifier [Optional]
| | | | | - choose -
| | | | | | packageText 0-1
| | | | | - or -
| | | | | | package 0-1
| | | | | - end choose -
| | | | | | packageModelCode 0-1
| | | | | | | @numberingOrg [Optional]
| | | | | | | volume 0-1
| | | | | | | @um [Required]
| | | | | | | netWeight 0-1
| | | | | | | @um [Required]
| | | | | | | grossWeight 0-1
| | | | | | | @um [Required]
| | | | | | | packageDim 0-1
| | | | | | | | length 1-1
| | | | | | | | @um [Required]
| | | | | | | | width 0-1
| | | | | | | | @um [Required]
| | | | | | | | height 0-1
| | | | | | | | @um [Required]
| | | | | | | actualItemsPerPackage 0-1
| | | | | | | packagesList 0-1
| | | | | | | | packageIdentification 1-unbounded
| | | | | | | | | packageN 1-1
| | | | | | | | | @numberingOrg [Optional]
| | | | | | | | | @packageContainerN [Optional]
| | | | | | | | | serialN 0-9
| | | | | | | | | @numberingOrg [Optional]
| | | | | | | | | @idQualifier [Optional]
| | | | | | | | itemsList 0-1
| | | | | | | | | qualityLevel 0-1
| | | | | | | | | @numberingOrg [Optional]
| | | | | | | | | @codeList [Optional]
| | | | | | | | | @listName [Optional]
| | | | | | | | | @listVersion [Optional]
| | | | | | | | | itemIdentification 1-unbounded
| | | | | | | | | | serialN 1-9
| | | | | | | | | | @numberingOrg [Optional]
| | | | | | | | | | @idQualifier [Optional]
| | | | | | | | | note 0-99
| | | | | | | | | @numberingOrg [Optional]
| | | | | | | | | @codeList [Optional]
| | | | | | | | | @noteLabel [Optional]
| | | | | | | acsPack 0-1
| | | | | | | - choose -
| | | | | | | | acsPackCode 1-1
| | | | | | | - or -
| | | | | | | | acsPackText 1-1
| | | | | | | - end choose -
| | | | | | | itemsList 0-1

```

```

| | | | qualityLevel 0-1
| | | | @numberingOrg [Optional]
| | | | @codeList [Optional]
| | | | @listName [Optional]
| | | | @listVersion [Optional]
| | | | itemIdentification 1-unbounded
| | | | | serialN 1-9
| | | | | @numberingOrg [Optional]
| | | | | @idQualifier [Optional]
| | | packageN 0-unbounded
| | | @numberingOrg [Optional]
| | | @packageContainerN [Optional]
| | | note 0-99
| | | @numberingOrg [Optional]
| | | @codeList [Optional]
| | | @noteLabel [Optional]

```

2.2 Detailed description of document elements

Following tables show all elements (complex and simple) used in this document. Description includes: 1) element's information: xml tag, name, brief description, data type and syntax constraints; 2) information about use of the element in a particular position in the document: xpath and possible associated notes.

2.2.1 Complex elements (Aggregate Business Information Entities)

Complex elements are those elements whose content is composed of other elements (childs).Complex elements are alphabetically ordered.

acsCode	full codification identifying an accessory product usually coupled with garment or other fashion product (XPath ACSDesRequest/ARbody/ARitem/acsCode) 1-2
acsPack	type of wrapping or packing of the accessory (XPath ACSDesRequest/shipInfo/packages/handlingChar/acsPack) 0-1 (XPath ACSDesRequest/acsPack) 0-1 (XPath ACSDesRequest/ARbody/ARitem/acsPack) 0-1 (XPath ACSDesRequest/ARbody/ARitem/shipInfo/packages/handlingChar/acsPack) 0-1
actualPackageUnit	description and identification of a single transport package (XPath ACSDesRequest/ARbody/ARitem/shipInfo/actualPackageUnit) 0-unbounded - note: <i>this element might be repeated for listing each single package of the shipment</i> (XPath ACSDesRequest/shipInfo/actualPackageUnit) 0-unbounded - note: <i>this element might be repeated for listing each single package of the shipment</i>
ARbody	body of the document ACCESSORY DESPATCH REQUEST (XPath ACSDesRequest/ARbody) 1-1
ARitem	line item of the document ACCESSORY DESPATCH REQUEST (XPath ACSDesRequest/ARbody/ARitem) 1-unbounded
attachment	an attached document. An attachment can refer to an external document or be included with the document being exchanged (XPath ACSDesRequest/TRheader/refDoc/attachment) 0-1 (XPath ACSDesRequest/ARbody/ARitem/refDoc/attachment) 0-1
buyer	details of the Buyer (party that buys the good or service that is object of the current collaborative process) - base type: Nad, (XPath ACSDesRequest/TRheader/buyer) 1-1
csRange	range of color-size for a fashion article (XPath ACSDesRequest/ARbody/ARitem/csRange) 0-99
EPCList	list of identifiers used for tracing a physical item with RFID technology (XPath ACSDesRequest/shipInfo/packages/EPCList) 0-1 - note: <i>this element is DEPRECATED, please use the specific elements</i> (XPath ACSDesRequest/ARbody/ARitem/shipInfo/packages/EPCList) 0-1 - note: <i>this element is DEPRECATED, please use the specific elements</i>
externalReference	details about an external object, such as a document stored at a remote location (XPath ACSDesRequest/TRheader/refDoc/attachment/externalReference) 0-99 (XPath ACSDesRequest/ARbody/ARitem/refDoc/attachment/externalReference) 0-99
garmentVariant	garment product variant (XPath ACSDesRequest/ARbody/ARitem/csRange/garmentVariant) 0-9

	- note: <i>used only if not already specified in the article code</i>
garPack	the packaging mode of the item or a part of it. (XPath ACSDesRequest/shipInfo/packages/handlingChar/garPack) 0-1 (XPath ACSDesRequest/ARbody/ARitem/shipInfo/packages/handlingChar/garPack) 0-1
handlingChar	features of an item (item or package) useful for its transport and warehouse management. (XPath ACSDesRequest/shipInfo/packages/handlingChar) 0-1 - note: <i>in this case the characteristics are related to the package.</i> (XPath ACSDesRequest/ARbody/ARitem/shipInfo/packages/handlingChar) 0-1 - note: <i>in this case the characteristics are related to the package.</i>
itemIdentification	serial identification of a product unit (XPath ACSDesRequest/shipInfo/actualPackageUnit/itemsList/itemIdentification) 1- nbounded - note: <i>identification of the single product unit contained in the list</i> (XPath ACSDesRequest/ARbody/ARitem/shipInfo/actualPackageUnit/itemsList/itemIdentification) 1-unbounded - note: <i>identification of the single product unit contained in the list</i> (XPath ACSDesRequest/ARbody/ARitem/csRange/sizeMatrix/sizeRow/itemsList/itemIdentification) 1-unbounded - note: <i>identification of the single product unit contained in the list</i> (XPath ACSDesRequest/ARbody/ARitem/itemsList/itemIdentification) 1-unbounded - note: <i>identification of the single product unit contained in the list</i>
itemsList	list of the single product units (XPath ACSDesRequest/ARbody/ARitem/shipInfo/actualPackageUnit/itemsList) 0-1 (XPath ACSDesRequest/ARbody/ARitem/csRange/sizeMatrix/sizeRow/itemsList) 0-1 - note: <i>the usage in this position is alternative to its usage within the document line element</i> (XPath ACSDesRequest/ARbody/ARitem/itemsList) 0-1 - note: <i>the usage in this position is alternative to its usage within sizeRow</i> (XPath ACSDesRequest/shipInfo/actualPackageUnit/itemsList) 0-1
packageDim	dimensions of a transport package (XPath ACSDesRequest/ARbody/ARitem/shipInfo/packages/packageDim) 0-1 (XPath ACSDesRequest/shipInfo/actualPackageUnit/packageDim) 0-1 (XPath ACSDesRequest/shipInfo/packages/packageDim) 0-1 (XPath ACSDesRequest/ARbody/ARitem/shipInfo/actualPackageUnit/packageDim) 0-1
packageIdentification	serial identification of a package (XPath ACSDesRequest/shipInfo/actualPackageUnit/packagesList/packageIdentification) 1-unbounded - note: <i>identification of the single package contained in the list</i> (XPath ACSDesRequest/shipInfo/actualPackageUnit/packageIdentification) 1-1 (XPath ACSDesRequest/ARbody/ARitem/shipInfo/actualPackageUnit/packagesList/packageIdentification) 1-unbounded - note: <i>identification of the single package contained in the list</i> (XPath ACSDesRequest/ARbody/ARitem/shipInfo/actualPackageUnit/packageIdentification) 1-1
packages	describes the composition of the transport packaging. Each element corresponds to a type of package: type, quantity, hierarchic level, list of identifiers of the single packages (XPath ACSDesRequest/ARbody/ARitem/shipInfo/packages) 0-99 - note: <i>this element must be iterated for each type of package</i> (XPath ACSDesRequest/shipInfo/packages) 0-99 - note: <i>this element must be iterated for each type of package</i>

packagesList	list of single packages (XPath ACSDesRequest/shipInfo/actualPackageUnit/packagesList) 0-1 - note: <i>list of packages contained within the actual package (thus with lower level). All the packages in the list should preferably have the same level.</i> (XPath ACSDesRequest/ARbody/ARitem/shipInfo/actualPackageUnit/packagesList) 0-1 - note: <i>list of packages contained within the actual package (thus with lower level). All the packages in the list should preferably have the same level.</i>
piecePack	type of wrapping or packing of the fabric pieces (XPath ACSDesRequest/shipInfo/packages/handlingChar/piecePack) 0-1 (XPath ACSDesRequest/ARbody/ARitem/shipInfo/packages/handlingChar/piecePack) 0-1
refDoc	identification of a document and of an item thereof, to which the message makes reference (XPath ACSDesRequest/ARbody/ARitem/refDoc) 0-9 (XPath ACSDesRequest/TRheader/refDoc) 0-9
shipInfo	miscellaneous information on transport and transport packages, referred either to the whole document or to the single item (XPath ACSDesRequest/shipInfo) 0-1 (XPath ACSDesRequest/ARbody/ARitem/shipInfo) 0-1
sizeMatrix	size matrix of an apparel product (XPath ACSDesRequest/ARbody/ARitem/csRange/sizeMatrix) 1-1
sizeRow	size matrix row of an apparel product (XPath ACSDesRequest/ARbody/ARitem/csRange/sizeMatrix/sizeRow) 1-99
supplier	details of the Supplier (party that supplies the good or service that is object of the current collaborative process) - base type: Nad, (XPath ACSDesRequest/TRheader/supplier) 1-1
thirdParty	details of the Third Party, different from Buyer or Supplier - base type: Nad, (XPath ACSDesRequest/ARbody/ARitem/thirdParty) 0-1 (XPath ACSDesRequest/TRheader/thirdParty) 0-5 - note: <i>here the Consignee when different from the Client must be specified</i>
trade	general terms of trade for the specified supply (XPath ACSDesRequest/trade) 0-1 - note: <i>The general terms of trade to be send to the delivery party</i>
transInfo	details of transport: mode, carrier and delivery place (XPath ACSDesRequest/shipInfo/transInfo) 0-9 - note: <i>this data group can be iterated for each transport leg. They have to be in ordered sequence from initial place up to the final delivery place.</i> (XPath ACSDesRequest/ARbody/ARitem/shipInfo/transInfo) 0-9 - note: <i>this data group can be iterated for each transport leg. They have to be in ordered sequence from initial place up to the final delivery place.</i>
TRheader	header of the TEXTILES DESPATCH REQUEST (XPath ACSDesRequest/TRheader) 1-1
yarnInWrap	details specifying the inner wrapping of a yarn product (XPath ACSDesRequest/ARbody/ARitem/shipInfo/packages/handlingChar/yarnPack/yarnInWrap) 0-1 (XPath ACSDesRequest/shipInfo/packages/handlingChar/yarnPack/yarnInWrap) 0-1
yarnPack	details of type of presentation used for the yarn (XPath ACSDesRequest/ARbody/ARitem/shipInfo/packages/handlingChar/yarnPack) 0-1 (XPath ACSDesRequest/shipInfo/packages/handlingChar/yarnPack) 0-1

yarnReel	<p>details of the packaging of a yarn product (bobbin and reel,..)</p> <p>(XPath ACSDesRequest/ARbody/ARitem/shipInfo/packages/handlingChar/yarnPack/yarnReel) 1-1</p> <p>(XPath ACSDesRequest/shipInfo/packages/handlingChar/yarnPack/yarnReel) 1-1</p>
-----------------	--

2.2.2 Simple elements (Basic Business Information Entities)

Simple elements are those elements whose content is characterized by a data type plus a domain of possible values. Simple elements are alphabetically ordered.

acsName	<p>denomination of an accessory product usually coupled with garment</p> <p>- base type: string, max length: 100,</p> <p>(XPath ACSDesRequest/ARbody/ARitem/acsName) 0-1</p>
acsPackCode	<p>code specifying the type of wrapping or packing used for the accessory</p> <p>- base type: string,</p> <p>(XPath ACSDesRequest/shipInfo/packages/handlingChar/acsPack/acsPackCode) 1-1</p> <p>(XPath ACSDesRequest/acsPack/acsPackCode) 1-1</p> <p>(XPath ACSDesRequest/ARbody/ARitem/shipInfo/packages/handlingChar/acsPack/acsPackCode) 1-1</p> <p>(XPath ACSDesRequest/ARbody/ARitem/acsPack/acsPackCode) 1-1</p>
acsPackText	<p>free text specifying the type of wrapping or packing used for the accessory</p> <p>- base type: string, max length: 250,</p> <p>(XPath ACSDesRequest/shipInfo/packages/handlingChar/acsPack/acsPackText) 1-1</p> <p>(XPath ACSDesRequest/ARbody/ARitem/shipInfo/packages/handlingChar/acsPack/acsPackText) 1-1</p> <p>(XPath ACSDesRequest/acsPack/acsPackText) 1-1</p> <p>(XPath ACSDesRequest/ARbody/ARitem/acsPack/acsPackText) 1-1</p>
actualItemsPerPackage	<p>the quantity of items actually contained in the package</p> <p>- base type: decimal,</p> <p>(XPath ACSDesRequest/ARbody/ARitem/shipInfo/actualPackageUnit/actualItemsPerPackage) 0-1</p> <p>(XPath ACSDesRequest/shipInfo/actualPackageUnit/actualItemsPerPackage) 0-1</p>
added	<p>additional code of the product (complementing the formers)</p> <p>- base type: string, max length: 80,</p> <p>(XPath ACSDesRequest/ARbody/ARitem/acsCode/added) 0-9</p> <p>- note: <i>here an additional codification (see table T44) can be specified</i></p>
additionalComponentCode	<p>an additional code to identify a fashion product or a part of it (it is a way to codify the item, but it is not one of the codes to identify it). It is not a serial identifier.</p> <p>- base type: string,</p> <p>(XPath ACSDesRequest/ARbody/ARitem/csRange/sizeMatrix/sizeRow/additionalComponentCode) 0-9</p>
additionalIdentifier	<p>additional identification code of a Party, for example customs registries or others</p> <p>- base type: string, max length: 15,</p> <p>(XPath ACSDesRequest/TRheader/buyer/additionalIdentifier) 0-9</p> <p>- note: <i>identifiers for example for exports, such as MID (Manufacturer Identification Code), EORI (E.O.R.I. - Economic Operator Registration and Identification)</i></p> <p>(XPath ACSDesRequest/TRheader/supplier/additionalIdentifier) 0-9</p> <p>- note: <i>identifiers for example for exports, such as MID (Manufacturer Identification Code), EORI (E.O.R.I. - Economic Operator Registration and Identification)</i></p>

@addType	<p>qualifier of the additional coding of a product</p> <ul style="list-style-type: none"> - base type: string, cod. table: T44 http://www.ebiz.enea.it/moda-ml/repository/codelist/draft/gc_T44.xml (XPath ACSDesRequest/ARbody/ARitem/acsCode/added/@addType) [Optional] - nota: <i>addType</i> allows the clarification of the meaning of the added element content; it is strongly suggested to use it always.
art	<p>article number of the product</p> <ul style="list-style-type: none"> - base type: string, max length: 80, (XPath ACSDesRequest/ARbody/ARitem/acsCode/art) 1-1
binaryObject	<p>a binary large object containing an attached document</p> <ul style="list-style-type: none"> - base type: base64Binary, (XPath ACSDesRequest/TRheader/refDoc/attachment/binaryObject) 0-1 (XPath ACSDesRequest/ARbody/ARitem/refDoc/attachment/binaryObject) 0-1
carrier	<p>identification of the transport carrier</p> <ul style="list-style-type: none"> - base type: string, max length: 40, (XPath ACSDesRequest/shipInfo/transInfo/carrier) 0-1 (XPath ACSDesRequest/ARbody/ARitem/shipInfo/transInfo/carrier) 0-1
@characterSet	<p>the character set of the binary object if the mime type is text</p> <ul style="list-style-type: none"> - base type: normalizedString, (XPath ACSDesRequest/ARbody/ARitem/refDoc/attachment/binaryObject/@characterSet) [Optional] (XPath ACSDesRequest/TRheader/refDoc/attachment/binaryObject/@characterSet) [Optional]
characterSetCode	<p>the character set of an external document</p> <ul style="list-style-type: none"> - base type: normalizedString, (XPath ACSDesRequest/ARbody/ARitem/refDoc/attachment/externalReference/characterSetCode) 0-1 (XPath ACSDesRequest/TRheader/refDoc/attachment/externalReference/characterSetCode) 0-1
city	<p>name of the city (town, village)</p> <ul style="list-style-type: none"> - base type: string, max length: 40, (XPath ACSDesRequest/TRheader/buyer/city) 0-1 (XPath ACSDesRequest/ARbody/ARitem/thirdParty/city) 0-1 (XPath ACSDesRequest/TRheader/thirdParty/city) 0-1 (XPath ACSDesRequest/TRheader/supplier/city) 0-1
@codeList	<p>it specifies the URL where the list of codes used to make an instance of the element can be found</p> <ul style="list-style-type: none"> - base type: string, max length: 255, (XPath ACSDesRequest/ARbody/ARitem/csRange/garmentVariant/variantCode/@codeList) [Optional] - nota: <i>this attribute should be ALTERNATIVE to the others</i> (XPath ACSDesRequest/ARbody/ARitem/acsCode/art/@codeList) [Optional] - nota: <i>this attribute should be ALTERNATIVE to the others</i> (XPath ACSDesRequest/ARbody/ARitem/shipInfo/actualPackageUnit/itemsList/qualityLevel/@codeList) [Optional] (XPath ACSDesRequest/shipInfo/packages/handlingChar/note/@codeList) [Optional] - nota: <i>must be used to provide (URL) the list of codes used in "noteLabel"</i> (XPath ACSDesRequest/shipInfo/actualPackageUnit/itemsList/qualityLevel/@codeList) [Optional] (XPath ACSDesRequest/ARbody/ARitem/csRange/sizeMatrix/sizeRow/additionalComponentCode/@codeList) [Optional] (XPath ACSDesRequest/ARbody/ARitem/note/@codeList) [Optional] - nota: <i>must be used to provide (URL) the list of codes used in "noteLabel"</i> (XPath ACSDesRequest/ARbody/ARitem/acsCode/pattern/@codeList) [Optional] - nota: <i>this attribute should be ALTERNATIVE to the others</i> (XPath ACSDesRequest/ARbody/ARitem/acsCode/color/@codeList) [Optional] - nota: <i>this attribute could be used as alternative to the others</i> (XPath ACSDesRequest/shipInfo/actualPackageUnit/note/@codeList) [Optional]

	<p>- nota: <i>must be used to provide (URL) the list of codes used in "noteLabel"</i> (XPath ACSDesRequest/ARbody/ARitem/csRange/drop/@codeList) [Optional] (XPath ACSDesRequest/TRheader/refDoc/season/@codeList) [Optional] (XPath ACSDesRequest/ARbody/ARitem/shipInfo/actualPackageUnit/note/@codeList) [Optional]</p> <p>- nota: <i>must be used to provide (URL) the list of codes used in "noteLabel"</i> (XPath ACSDesRequest/ARbody/ARitem/csRange/sizeMatrix/sizeRow/size/@codeList) [Optional] (XPath ACSDesRequest/ARbody/ARitem/shipInfo/packages/handlingChar/note/@codeList) [Optional]</p> <p>- nota: <i>must be used to provide (URL) the list of codes used in "noteLabel"</i> (XPath ACSDesRequest/ARbody/ARitem/csRange/color/@codeList) [Optional]</p> <p>- nota: <i>this attribute could be used as alternative to the others</i> (XPath ACSDesRequest/ARbody/ARitem/csRange/sizeMatrix/sizeRow/itemsList/qualityLevel/@codeList) [Optional] (XPath ACSDesRequest/ARbody/ARitem/refDoc/season/@codeList) [Optional] (XPath ACSDesRequest/ARbody/ARitem/itemsList/qualityLevel/@codeList) [Optional]</p> <p>(XPath ACSDesRequest/ARbody/ARitem/csRange/garmentVariant/variantType/@codeList) [Optional]</p> <p>- nota: <i>this attribute should be ALTERNATIVE to the others</i> (XPath ACSDesRequest/ARbody/ARitem/csRange/sizeMatrix/sizeRow/drop/@codeList) [Optional] (XPath ACSDesRequest/TRheader/note/@codeList) [Optional]</p> <p>- nota: <i>must be used to provide (URL) the list of codes used in "noteLabel"</i></p>
color	<p>colour number of the product, when not included in the model or fabric code</p> <p>- base type: string, max length: 15, (XPath ACSDesRequest/ARbody/ARitem/acsCode/color) 0-1 (XPath ACSDesRequest/ARbody/ARitem/csRange/color) 0-1</p> <p>- note: <i>used only if not already specified in the article code</i></p>
country	<p>code of the nation</p> <p>- base type: string, cod. table: T10 http://www.ebiz.enea.it/moda-ml/repository/codelist/draft/gc_T10.xml (XPath ACSDesRequest/TRheader/thirdParty/country) 0-1 (XPath ACSDesRequest/TRheader/supplier/country) 0-1 (XPath ACSDesRequest/ARbody/ARitem/thirdParty/country) 0-1 (XPath ACSDesRequest/TRheader/buyer/country) 0-1</p>
@dateForm	<p>format used for the date</p> <p>- base type: string, cod. table: NT29 http://www.ebiz.enea.it/moda-ml/repository/codelist/draft/gc_NT29.xml (XPath ACSDesRequest/shipInfo/delEffectiveDate/@dateForm) [Optional] (XPath ACSDesRequest/ARbody/ARitem/shipInfo/transInfo/despatchDate/@dateForm) [Optional] (XPath ACSDesRequest/ARbody/ARitem/refDoc/docDate/@dateForm) [Optional] (XPath ACSDesRequest/ARbody/ARitem/shipInfo/delEffectiveDate/@dateForm) [Optional] (XPath ACSDesRequest/ARbody/ARitem/shipInfo/transInfo/delEffectiveDate/@dateForm) [Optional] (XPath ACSDesRequest/shipInfo/transInfo/despatchDate/@dateForm) [Optional] (XPath ACSDesRequest/TRheader/msgDate/@dateForm) [Optional] (XPath ACSDesRequest/TRheader/refDoc/docDate/@dateForm) [Optional] (XPath ACSDesRequest/shipInfo/transInfo/delEffectiveDate/@dateForm) [Optional]</p>
delEffectiveDate	<p>effective date of delivery of goods (declared in Despatch), according to one of the patterns YYYY-MM-DD, YYYY-MM-DD:HH-MM or YYYY-WW.</p> <p>- base type: string, (XPath ACSDesRequest/ARbody/ARitem/shipInfo/delEffectiveDate) 0-1 (XPath ACSDesRequest/shipInfo/delEffectiveDate) 0-1 (XPath ACSDesRequest/ARbody/ARitem/shipInfo/transInfo/delEffectiveDate) 0-1 (XPath ACSDesRequest/shipInfo/transInfo/delEffectiveDate) 0-1</p>

deliveryPlace	place of delivery of goods, ultimate or related to a given leg - base type: string, max length: 250, (XPath ACSDesRequest/shipInfo/transInfo/deliveryPlace) 0-1 (XPath ACSDesRequest/ARbody/ARitem/shipInfo/transInfo/deliveryPlace) 0-1
dept	name or code of a contact department within a Party - base type: string, max length: 40, (XPath ACSDesRequest/ARbody/ARitem/thirdParty/dept) 0-1 (XPath ACSDesRequest/TRheader/buyer/dept) 0-1 (XPath ACSDesRequest/TRheader/supplier/dept) 0-1 (XPath ACSDesRequest/TRheader/thirdParty/dept) 0-1
description	free text description. The content of the element must be unique, it might be translated and repeated into more languages (thus no more than one instance for each language). - base type: string, max length: 250, (XPath ACSDesRequest/ARbody/ARitem/acsCode/description) 0-unbounded - note: <i>Product description</i> (XPath ACSDesRequest/ARbody/ARitem/shipInfo/packages/description) 0-unbounded (XPath ACSDesRequest/shipInfo/packages/description) 0-unbounded
despatchDate	date of despatch of goods, requested or promised in the purchase process, according to one of the patterns YYYY-MM-DD, YYYY-MM-DD:HH-MM or YYYY-WW. - base type: string, (XPath ACSDesRequest/shipInfo/transInfo/despatchDate) 0-1 (XPath ACSDesRequest/ARbody/ARitem/shipInfo/transInfo/despatchDate) 0-1
despatchPlace	place of despatch of goods, origin or related to a given leg - base type: string, max length: 250, (XPath ACSDesRequest/ARbody/ARitem/shipInfo/transInfo/despatchPlace) 0-1 (XPath ACSDesRequest/shipInfo/transInfo/despatchPlace) 0-1
docDate	date of issue of the referenced document, according to one of the patterns YYYY-MM-DD, YYYY-MM-DD:HH-MM or YYYY-WW. - base type: string, (XPath ACSDesRequest/ARbody/ARitem/refDoc/docDate) 0-1 (XPath ACSDesRequest/TRheader/refDoc/docDate) 0-1
docID	identification number of the referenced document SINCE 2008-1 ITS USE IN THE HEADER IS DISCOURAGED (REPLACED BY msgID) - base type: string, max length: 80, (XPath ACSDesRequest/TRheader/refDoc/docID) 1-2 (XPath ACSDesRequest/ARbody/ARitem/refDoc/docID) 1-2 (XPath ACSDesRequest/TRheader/docID) 0-1
@docType	type or class to which the referenced document belongs - base type: string, cod. table: T21 http://www.ebiz.enea.it/moda-ml/repository/codelist/draft/gc_T21.xml (XPath ACSDesRequest/ARbody/ARitem/refDoc/@docType) [Required] (XPath ACSDesRequest/TRheader/refDoc/@docType) [Required]
drop	drop number of the garment - base type: string, max length: 15, (XPath ACSDesRequest/ARbody/ARitem/csRange/sizeMatrix/sizeRow/drop) 0-1 - note: <i>DEPRECATED, anyhow it is used only if not already specified in the article code or csRange</i> (XPath ACSDesRequest/ARbody/ARitem/csRange/drop) 0-1 - note: <i>used only if not already specified in the article code</i>
@email	electronic mail address of the contact person within a Party - base type: string, max length: 250, (XPath ACSDesRequest/TRheader/thirdParty/person/@email) [Optional] (XPath ACSDesRequest/ARbody/ARitem/thirdParty/person/@email) [Optional]

	(XPath ACSDesRequest/TRheader/buyer/person/@email) [Optional] (XPath ACSDesRequest/TRheader/supplier/person/@email) [Optional]
@encoding	specifies the decoding algorithm of the binary object - base type: normalizedString, (XPath ACSDesRequest/ARbody/ARitem/refDoc/attachment/binaryObject/@encoding) [Optional] (XPath ACSDesRequest/TRheader/refDoc/attachment/binaryObject/@encoding) [Optional]
encodingCode	the encoding/decoding algorithm used with the external object - base type: normalizedString, (XPath ACSDesRequest/ARbody/ARitem/refDoc/attachment/externalReference/encodingCode) 0-1 (XPath ACSDesRequest/TRheader/refDoc/attachment/externalReference/encodingCode) 0-1
EPC	serial identifier used for tracing a physical item with RFID technology - base type: string, (XPath ACSDesRequest/ARbody/ARitem/shipInfo/packages/EPCList/EPC) 1-unbounded (XPath ACSDesRequest/shipInfo/packages/EPCList/EPC) 1-unbounded
@extinction	specified if the referred position (document/line) in refDoc is cleared (exhausted) by this line item. Value: True = exhausted, False = not exhausted - base type: boolean, (XPath ACSDesRequest/ARbody/ARitem/@extinction) [Optional]
@fax	fax number of the contact person within a Party - base type: string, max length: 35, (XPath ACSDesRequest/TRheader/buyer/person/@fax) [Optional] (XPath ACSDesRequest/TRheader/supplier/person/@fax) [Optional] (XPath ACSDesRequest/ARbody/ARitem/thirdParty/person/@fax) [Optional] (XPath ACSDesRequest/TRheader/thirdParty/person/@fax) [Optional]
fileName	unique identifier (name) of the file - base type: string, max length: 255, (XPath ACSDesRequest/ARbody/ARitem/refDoc/attachment/fileName) 0-1 (XPath ACSDesRequest/TRheader/refDoc/attachment/fileName) 0-1
fillingCriterion	the assortment criterion to fill the specified kind of package: it states the homogeneity criterion (eg: "model", "color", "size"). - base type: string, cod. table: NT51 http://www.ebiz.enea.it/moda-ml/repository/codelist/draft/gc_NT51.xml (XPath ACSDesRequest/shipInfo/packages/fillingCriterion) 0-9 (XPath ACSDesRequest/ARbody/ARitem/shipInfo/packages/fillingCriterion) 0-9
@format	the format of the binary content - base type: string, (XPath ACSDesRequest/TRheader/refDoc/attachment/binaryObject/@format) [Optional] (XPath ACSDesRequest/ARbody/ARitem/refDoc/attachment/binaryObject/@format) [Optional]
formatCode	the format of the external object - base type: normalizedString, (XPath ACSDesRequest/ARbody/ARitem/refDoc/attachment/externalReference/formatCode) 0-1 (XPath ACSDesRequest/TRheader/refDoc/attachment/externalReference/formatCode) 0-1
garPackCode	a code specifying the type of packaging used for the item. - base type: string, (XPath ACSDesRequest/ARbody/ARitem/shipInfo/packages/handlingChar/garPack/garPackCode) 1-1 (XPath ACSDesRequest/shipInfo/packages/handlingChar/garPack/garPackCode) 1-1

garPackText	<p>a free text specifying the type of packaging used for the item.</p> <ul style="list-style-type: none"> - base type: string, (XPath ACSDesRequest/ARbody/ARitem/shipInfo/packages/handlingChar/garPack/garPackText) 1-1 (XPath ACSDesRequest/shipInfo/packages/handlingChar/garPack/garPackText) 1-1
grossWeight	<p>the gross weight, declared for transport or customs purpose</p> <ul style="list-style-type: none"> - base type: decimal, min inclusive: 0, fraction digits: 2, (XPath ACSDesRequest/ARbody/ARitem/shipInfo/transInfo/grossWeight) 0-1 (XPath ACSDesRequest/ARbody/ARitem/shipInfo/actualPackageUnit/grossWeight) 0-1 (XPath ACSDesRequest/ARbody/ARitem/shipInfo/packages/handlingChar/grossWeight) 0-1 (XPath ACSDesRequest/shipInfo/actualPackageUnit/grossWeight) 0-1 (XPath ACSDesRequest/shipInfo/transInfo/grossWeight) 0-1 (XPath ACSDesRequest/shipInfo/packages/handlingChar/grossWeight) 0-1
handlingType	<p>information to handle the item (eg "breakable").</p> <ul style="list-style-type: none"> - base type: string, (XPath ACSDesRequest/ARbody/ARitem/shipInfo/packages/handlingChar/handlingType) 0-1 (XPath ACSDesRequest/shipInfo/packages/handlingChar/handlingType) 0-1
height	<p>effective height of a specified object</p> <ul style="list-style-type: none"> - base type: decimal, min inclusive: 0, fraction digits: 2, (XPath ACSDesRequest/shipInfo/actualPackageUnit/packageDim/height) 0-1 (XPath ACSDesRequest/ARbody/ARitem/shipInfo/actualPackageUnit/packageDim/height) 0-1 (XPath ACSDesRequest/shipInfo/packages/packageDim/height) 0-1 (XPath ACSDesRequest/ARbody/ARitem/shipInfo/packages/packageDim/height) 0-1
id	<p>primary identification code of a Party; it is recommended the format: nation code (ISO 3166) + VAT identification number (11 crt), with the qualifier "numberingOrg"= MF</p> <ul style="list-style-type: none"> - base type: string, max length: 15, (XPath ACSDesRequest/TRheader/supplier/id) 1-1 (XPath ACSDesRequest/TRheader/buyer/id) 1-1 (XPath ACSDesRequest/ARbody/ARitem/thirdParty/id) 1-1 (XPath ACSDesRequest/TRheader/thirdParty/id) 1-1
@idQualifier	<p>Qualification of the identifier.</p> <ul style="list-style-type: none"> - base type: string, (XPath ACSDesRequest/shipInfo/actualPackageUnit/itemsList/itemIdentification/serialN/@idQualifier) [Optional] - nota: <i>this attribute should be used when the numberingOrg attribute is not enough to declare the type of serial identifier</i> (XPath ACSDesRequest/ARbody/ARitem/shipInfo/actualPackageUnit/packagesList/packageIdentification/serialN/@idQualifier) [Optional] - nota: <i>this attribute should be used when the numberingOrg attribute is not enough to declare the type of serial identifier</i> (XPath ACSDesRequest/shipInfo/actualPackageUnit/packageIdentification/serialN/@idQualifier) [Optional] - nota: <i>this attribute should be used when the numberingOrg attribute is not enough to declare the type of serial identifier</i> (XPath ACSDesRequest/ARbody/ARitem/csRange/sizeMatrix/sizeRow/itemsList/itemIdentification/serialN/@idQualifier) [Optional] - nota: <i>this attribute should be used when the numberingOrg attribute is not enough to declare the type of serial identifier</i> (XPath ACSDesRequest/TRheader/buyer/additionalIdentifier/@idQualifier) [Optional]

	<p>- nota: <i>this attribute should be used when the numberingOrg attribute is not enough to declare the type of identifier</i> (XPath ACSDesRequest/ARbody/ARitem/shipInfo/actualPackageUnit/itemsList/itemIdentification/serialN/@idQualifier) [Optional]</p> <p>- nota: <i>this attribute should be used when the numberingOrg attribute is not enough to declare the type of serial identifier</i> (XPath ACSDesRequest/shipInfo/actualPackageUnit/packagesList/packageIdentification/serialN/@idQualifier) [Optional]</p> <p>- nota: <i>this attribute should be used when the numberingOrg attribute is not enough to declare the type of serial identifier</i> (XPath ACSDesRequest/TRheader/supplier/additionalIdentifier/@idQualifier) [Optional]</p> <p>- nota: <i>this attribute should be used when the numberingOrg attribute is not enough to declare the type of identifier</i> (XPath ACSDesRequest/ARbody/ARitem/shipInfo/actualPackageUnit/packageIdentification/serialN/@idQualifier) [Optional]</p> <p>- nota: <i>this attribute should be used when the numberingOrg attribute is not enough to declare the type of serial identifier</i> (XPath ACSDesRequest/ARbody/ARitem/itemsList/itemIdentification/serialN/@idQualifier) [Optional]</p> <p>- nota: <i>this attribute should be used when the numberingOrg attribute is not enough to declare the type of serial identifier</i></p>
incoTerm	<p>specification of the terms of trade (INCOTERMS) - base type: string, cod. table: T3 http://www.ebiz.enea.it/moda-ml/repository/codelist/draft/gc_T3.xml (XPath ACSDesRequest/trade/incoTerm) 1-1</p>
incoTermText	<p>free text specifying the terms of trade (incoterm, location) - base type: string, max length: 250, (XPath ACSDesRequest/trade/incoTermText) 1-1</p>
@isURL	<p>it indicates if the referred element is an URL (true) or not (false) - base type: boolean, (XPath ACSDesRequest/TRheader/refDoc/attachment/externalReference/uri/@isURL) [Optional] [Default= true] - nota: <i>usage of URLs is recommended</i> (XPath ACSDesRequest/ARbody/ARitem/refDoc/attachment/externalReference/uri/@isURL) [Optional] [Default= true] - nota: <i>usage of URLs is recommended</i></p>
itemID	<p>number of the line/item of the referenced document - base type: string, max length: 6, (XPath ACSDesRequest/ARbody/ARitem/refDoc/itemID) 0-1 (XPath ACSDesRequest/TRheader/refDoc/itemID) 0-1</p>
itemsPerPackage	<p>the quantity of items that can be contained in a package. - base type: decimal, (XPath ACSDesRequest/ARbody/ARitem/shipInfo/packages/itemsPerPackage) 0-1 (XPath ACSDesRequest/shipInfo/packages/itemsPerPackage) 0-1</p>
label	<p>indicates if the physical object specified has to be labelled - base type: boolean, (XPath ACSDesRequest/ARbody/ARitem/shipInfo/packages/handlingChar/yarnPack/yarnReel/label) 0-1 (XPath ACSDesRequest/ARbody/ARitem/shipInfo/packages/handlingChar/yarnPack/yarnInWrap/label) 0-1 (XPath ACSDesRequest/shipInfo/packages/handlingChar/yarnPack/yarnReel/label) 0-1 (XPath ACSDesRequest/shipInfo/packages/handlingChar/yarnPack/yarnInWrap/label) 0-1</p>

labelWrit	<p>text that must be written on the lable of a specified physical object when its customization is required</p> <ul style="list-style-type: none"> - base type: string, max length: 350, (XPath ACSDesRequest/ARbody/ARitem/shipInfo/packages/handlingChar/yarnPack/yarnInWrap/labelWrit) 0-1 (XPath ACSDesRequest/ARbody/ARitem/shipInfo/packages/handlingChar/yarnPack/yarnReel/labelWrit) 0-1 (XPath ACSDesRequest/shipInfo/packages/handlingChar/yarnPack/yarnInWrap/labelWrit) 0-1 (XPath ACSDesRequest/shipInfo/packages/handlingChar/yarnPack/yarnReel/labelWrit) 0-1
legalName	<p>legal name of a Party</p> <ul style="list-style-type: none"> - base type: string, max length: 250, (XPath ACSDesRequest/ARbody/ARitem/thirdParty/legalName) 0-1 (XPath ACSDesRequest/TRheader/thirdParty/legalName) 0-1 (XPath ACSDesRequest/TRheader/supplier/legalName) 0-1 (XPath ACSDesRequest/TRheader/buyer/legalName) 0-1
length	<p>effective length of a specified object</p> <ul style="list-style-type: none"> - base type: decimal, min inclusive: 0, fraction digits: 2, (XPath ACSDesRequest/ARbody/ARitem/shipInfo/packages/packageDim/length) 1-1 - note: <i>here the maximum dimension must also be specified</i> (XPath ACSDesRequest/shipInfo/packages/packageDim/length) 1-1 - note: <i>here the maximum dimension must also be specified</i> (XPath ACSDesRequest/ARbody/ARitem/shipInfo/actualPackageUnit/packageDim/length) 1-1 - note: <i>here the maximum dimension must also be specified</i> (XPath ACSDesRequest/shipInfo/actualPackageUnit/packageDim/length) 1-1 - note: <i>here the maximum dimension must also be specified</i>
lineID	<p>unique identifier of the line item of the business document; it is set by the role that produces the document.</p> <ul style="list-style-type: none"> - base type: string, max length: 30, (XPath ACSDesRequest/ARbody/ARitem/lineID) 0-1
lineN	<p>number of the line item of the present message (xml document); it is set by the role that produces the document. Usually it is a progressive number, but not always.</p> <ul style="list-style-type: none"> - base type: positiveInteger, min inclusive: 1, max inclusive: 9999, (XPath ACSDesRequest/ARbody/ARitem/lineN) 1-1
@listName	<p>the name of the list of codes used to make an instance of the element (it might be thought as descriptive element, i.e. 'fabric printing technologies', or not, i.e. "T264")</p> <ul style="list-style-type: none"> - base type: string, max length: 40, (XPath ACSDesRequest/shipInfo/actualPackageUnit/itemsList/qualityLevel/@listName) [Optional] (XPath ACSDesRequest/ARbody/ARitem/csRange/garmentVariant/variantType/@listName) [Optional] - nota: <i>this attribute should always be used coupled with "numberingOrg"</i> (XPath ACSDesRequest/ARbody/ARitem/csRange/color/@listName) [Optional] - nota: <i>this attribute should always be used coupled with "numberingOrg"</i> (XPath ACSDesRequest/TRheader/refDoc/season/@listName) [Optional] (XPath ACSDesRequest/ARbody/ARitem/shipInfo/actualPackageUnit/itemsList/qualityLevel/@listName) [Optional] (XPath ACSDesRequest/ARbody/ARitem/csRange/sizeMatrix/sizeRow/itemsList/qualityLevel/@listName) [Optional] (XPath ACSDesRequest/ARbody/ARitem/acsCode/art/@listName) [Optional] - nota: <i>this attribute should always be used coupled with "numberingOrg"</i> (XPath ACSDesRequest/ARbody/ARitem/acsCode/color/@listName) [Optional] - nota: <i>this attribute should always be used coupled with "numberingOrg"</i>

	<p>(XPath ACSDesRequest/ARbody/ARitem/csRange/garmentVariant/variantCode/@listName) [Optional]</p> <p>- nota: <i>this attribute should always be used coupled with “numberingOrg”</i></p> <p>(XPath ACSDesRequest/ARbody/ARitem/refDoc/season/@listName) [Optional]</p> <p>(XPath ACSDesRequest/ARbody/ARitem/acsCode/pattern/@listName) [Optional]</p> <p>- nota: <i>this attribute should always be used coupled with “numberingOrg”</i></p> <p>(XPath ACSDesRequest/ARbody/ARitem/csRange/sizeMatrix/sizeRow/additionalComponentCode/@listName) [Optional]</p> <p>(XPath ACSDesRequest/ARbody/ARitem/itemsList/qualityLevel/@listName) [Optional]</p>
@listVersion	<p>it specifies the version of the list of codes used to make an instance of the element</p> <p>- base type: string, max length: 6,</p> <p>(XPath ACSDesRequest/ARbody/ARitem/csRange/garmentVariant/variantType/@listVersion) [Optional]</p> <p>- nota: <i>this attribute should always be used coupled with “numberingOrg” and “listName”</i></p> <p>(XPath ACSDesRequest/ARbody/ARitem/csRange/color/@listVersion) [Optional]</p> <p>- nota: <i>this attribute should always be used coupled with “numberingOrg” and “listName”</i></p> <p>(XPath ACSDesRequest/ARbody/ARitem/refDoc/season/@listVersion) [Optional]</p> <p>(XPath ACSDesRequest/ARbody/ARitem/csRange/garmentVariant/variantCode/@listVersion) [Optional]</p> <p>- nota: <i>this attribute should always be used coupled with “numberingOrg” and “listName”</i></p> <p>(XPath ACSDesRequest/TRheader/refDoc/season/@listVersion) [Optional]</p> <p>(XPath ACSDesRequest/ARbody/ARitem/acsCode/color/@listVersion) [Optional]</p> <p>- nota: <i>this attribute should always be used coupled with “numberingOrg” and “listName”</i></p> <p>(XPath ACSDesRequest/ARbody/ARitem/shipInfo/actualPackageUnit/itemsList/qualityLevel/@listVersion) [Optional]</p> <p>(XPath ACSDesRequest/shipInfo/actualPackageUnit/itemsList/qualityLevel/@listVersion) [Optional]</p> <p>(XPath ACSDesRequest/ARbody/ARitem/acsCode/pattern/@listVersion) [Optional]</p> <p>- nota: <i>this attribute should always be used coupled with “numberingOrg” and “listName”</i></p> <p>(XPath ACSDesRequest/ARbody/ARitem/csRange/sizeMatrix/sizeRow/additionalComponentCode/@listVersion) [Optional]</p> <p>(XPath ACSDesRequest/ARbody/ARitem/acsCode/art/@listVersion) [Optional]</p> <p>- nota: <i>this attribute should always be used coupled with “numberingOrg” and “listName”</i></p> <p>(XPath ACSDesRequest/ARbody/ARitem/csRange/sizeMatrix/sizeRow/itemsList/qualityLevel/@listVersion) [Optional]</p> <p>(XPath ACSDesRequest/ARbody/ARitem/itemsList/qualityLevel/@listVersion) [Optional]</p>
@ln	<p>Language code.</p> <p>- base type: string,</p> <p>(XPath ACSDesRequest/shipInfo/packages/description/@ln) [Optional]</p> <p>(XPath ACSDesRequest/ARbody/ARitem/shipInfo/packages/handlingChar/handlingType/@ln) [Optional]</p> <p>(XPath ACSDesRequest/ARbody/ARitem/shipInfo/packages/description/@ln) [Optional]</p> <p>(XPath ACSDesRequest/ARbody/ARitem/acsCode/description/@ln) [Optional]</p> <p>(XPath ACSDesRequest/shipInfo/packages/handlingChar/handlingType/@ln) [Optional]</p>
location	<p>specification of a location</p> <p>- base type: string, max length: 40,</p> <p>(XPath ACSDesRequest/trade/location) 0-1</p> <p>- note: <i>place to which the INCOTERM applies</i></p>

@logo	company logo (URL of the image jpeg or gif). It is recommended that the width of the image does not exceed 640 pixel. - base type: string, max length: 255, (XPath ACSDesRequest/TRheader/buyer/@logo) [Optional] (XPath ACSDesRequest/TRheader/supplier/@logo) [Optional]
lotN	lot number of a product or batch number of the raw material - base type: string, max length: 15, (XPath ACSDesRequest/ARbody/ARitem/lotN) 0-2
@LRI	attribute usable to format a string according to a customized User rule (local rule) - base type: string, cod. table: NT3 http://www.ebiz.enea.it/moda-ml/repository/codelist/draft/gc_NT3.xml (XPath ACSDesRequest/trade/location/@LRI) [Optional]
@mime	the mime type of the binary object - base type: normalizedString, (XPath ACSDesRequest/ARbody/ARitem/refDoc/attachment/binaryObject/@mime) [Optional] (XPath ACSDesRequest/TRheader/refDoc/attachment/binaryObject/@mime) [Optional]
mimeCode	mime type of the external object - base type: normalizedString, (XPath ACSDesRequest/TRheader/refDoc/attachment/externalReference/mimeCode) 0-1 (XPath ACSDesRequest/ARbody/ARitem/refDoc/attachment/externalReference/mimeCode) 0-1
minItemsPerPackage	the minimum quantity of items for the specified kind of package. - base type: decimal, min inclusive: 0, (XPath ACSDesRequest/ARbody/ARitem/shipInfo/packages/minItemsPerPackage) 0-1 (XPath ACSDesRequest/shipInfo/packages/minItemsPerPackage) 0-1
msgDate	date of issue of the present message (xml document), according to one of the patterns YYYY-MM-DD, YYYY-MM-DD:HH-MM or YYYY-WW. - base type: string, (XPath ACSDesRequest/TRheader/msgDate) 1-1
@msgfunction	function performed by the present message with regards to the transmission - base type: string, cod. table: NT18 http://www.ebiz.enea.it/moda-ml/repository/codelist/draft/gc_NT18.xml (XPath ACSDesRequest/@msgfunction) [Optional] [Default= OR]
msgID	key identifier of the business document in the information system of the issuing Party. In case of more despatches of the same business document, it is unchanged. - base type: string, max length: 35, (XPath ACSDesRequest/TRheader/msgID) 0-1
msgN	identification number given to the message (xml document) by its issuer. In case of more despatches of the same business document, it changes. - base type: string, max length: 35, (XPath ACSDesRequest/TRheader/msgN) 1-1
netWeight	the net weight declared for transport or customs purpose - base type: decimal, min inclusive: 0, fraction digits: 2, (XPath ACSDesRequest/shipInfo/transInfo/netWeight) 0-1 (XPath ACSDesRequest/shipInfo/actualPackageUnit/netWeight) 0-1 (XPath ACSDesRequest/ARbody/ARitem/shipInfo/packages/handlingChar/netWeight) 0-1 (XPath ACSDesRequest/shipInfo/packages/handlingChar/netWeight) 0-1 (XPath ACSDesRequest/ARbody/ARitem/shipInfo/transInfo/netWeight) 0-1

	<p>(XPath ACSDesRequest/ARbody/ARitem/shipInfo/actualPackageUnit/netWeight) 0-1</p>
note	<p>free text or structured (computer processing) note. For note structuring use the attributes "noteLabel" and "codelist"</p> <p>- base type: string, max length: 350,</p> <p>(XPath ACSDesRequest/ARbody/ARitem/shipInfo/actualPackageUnit/note) 0-99 (XPath ACSDesRequest/shipInfo/packages/handlingChar/note) 0-99 (XPath ACSDesRequest/ARbody/ARitem/shipInfo/packages/handlingChar/note) 0-99 (XPath ACSDesRequest/ARbody/ARitem/note) 0-99 (XPath ACSDesRequest/shipInfo/actualPackageUnit/note) 0-99 (XPath ACSDesRequest/TRheader/note) 0-99</p>
@noteLabel	<p>subject qualifier of a note</p> <p>- base type: string, max length: 35, (XPath ACSDesRequest/shipInfo/packages/handlingChar/note/@noteLabel) [Optional]</p> <p>- nota: <i>must be used to qualify the subject of the note</i> (XPath ACSDesRequest/shipInfo/actualPackageUnit/note/@noteLabel) [Optional]</p> <p>- nota: <i>must be used to qualify the subject of the note</i> (XPath ACSDesRequest/ARbody/ARitem/shipInfo/actualPackageUnit/note/@noteLabel) [Optional]</p> <p>- nota: <i>must be used to qualify the subject of the note</i> (XPath ACSDesRequest/TRheader/note/@noteLabel) [Optional]</p> <p>- nota: <i>must be used to qualify the subject of the note</i> (XPath ACSDesRequest/ARbody/ARitem/note/@noteLabel) [Optional]</p> <p>- nota: <i>must be used to qualify the subject of the note</i> (XPath ACSDesRequest/ARbody/ARitem/shipInfo/packages/handlingChar/note/@noteLabel) [Optional]</p> <p>- nota: <i>must be used to qualify the subject of the note</i></p>
@numberingOrg	<p>code specifying the organisation who has created or owns the coding or numbering system</p> <p>- base type: string, cod. table: NT6 http://www.ebiz.enea.it/moda-ml/repository/codelist/draft/gc_NT6.xml</p> <p>(XPath ACSDesRequest/ARbody/ARitem/shipInfo/packages/EPClist/EPC/@numberingOrg) [Optional] (XPath ACSDesRequest/shipInfo/actualPackageUnit/packageIdentification/serialN/@numberingOrg) [Optional]</p> <p>- nota: <i>here the issuer of the serial number must be specified (when different from the Supplier)</i> (XPath ACSDesRequest/shipInfo/packages/packageN/@numberingOrg) [Optional] (XPath ACSDesRequest/shipInfo/actualPackageUnit/packageIdentification/packageN/@numberingOrg) [Optional] (XPath ACSDesRequest/ARbody/ARitem/csRange/garmentVariant/variantCode/@numberingOrg) [Optional]</p> <p>- nota: <i>this attribute should be used either single or coupled with "listName" and "listVersion"</i> (XPath ACSDesRequest/ARbody/ARitem/shipInfo/actualPackageUnit/packageIdentification/serialN/@numberingOrg) [Optional]</p> <p>- nota: <i>here the issuer of the serial number must be specified (when different from the Supplier)</i> (XPath ACSDesRequest/TRheader/docID/@numberingOrg) [Optional]</p> <p>- nota: <i>here can be specified whose document numbering is used (e.g.: Client, Supplier, ..)</i> (XPath ACSDesRequest/ARbody/ARitem/csRange/garmentVariant/variantType/@numberingOrg) [Optional]</p> <p>- nota: <i>this attribute should be used either single or coupled with "listName" and "listVersion"</i> (XPath ACSDesRequest/shipInfo/packages/EPClist/EPC/@numberingOrg) [Optional]</p>

	<p>(XPath ACSDesRequest/ARbody/ARitem/shipInfo/actualPackageUnit/packageIdentification/packageN/@numberingOrg) [Optional]</p> <p>(XPath ACSDesRequest/ARbody/ARitem/lotN/@numberingOrg) [Optional]</p> <p>(XPath ACSDesRequest/ARbody/ARitem/csRange/sizeMatrix/sizeRow/itemsList/itemIdentification/serialN/@numberingOrg) [Optional]</p> <p>- nota: <i>here the issuer of the serial number must be specified (when different from the Supplier)</i></p> <p>(XPath ACSDesRequest/TRheader/note/@numberingOrg) [Optional]</p> <p>(XPath ACSDesRequest/ARbody/ARitem/thirdParty/id/@numberingOrg) [Optional]</p> <p>(XPath ACSDesRequest/ARbody/ARitem/shipInfo/packages/packageModelCode/@numberingOrg) [Optional]</p> <p>(XPath ACSDesRequest/shipInfo/packages/packageModelCode/@numberingOrg) [Optional]</p> <p>(XPath ACSDesRequest/shipInfo/packages/handlingChar/note/@numberingOrg) [Optional]</p> <p>(XPath ACSDesRequest/ARbody/ARitem/shipInfo/packages/packageN/@numberingOrg) [Optional]</p> <p>(XPath ACSDesRequest/ARbody/ARitem/csRange/sizeMatrix/sizeRow/additionalComponentCode/@numberingOrg) [Optional]</p> <p>(XPath ACSDesRequest/ARbody/ARitem/csRange/sizeMatrix/sizeRow/itemsList/qualityLevel/@numberingOrg) [Optional]</p> <p>(XPath ACSDesRequest/ARbody/ARitem/shipInfo/packages/handlingChar/note/@numberingOrg) [Optional]</p> <p>(XPath ACSDesRequest/TRheader/thirdParty/id/@numberingOrg) [Optional]</p> <p>(XPath ACSDesRequest/ARbody/ARitem/shipInfo/actualPackageUnit/packageModelCode/@numberingOrg) [Optional]</p> <p>(XPath ACSDesRequest/TRheader/refDoc/attachment/fileName/@numberingOrg) [Optional]</p> <p>(XPath ACSDesRequest/ARbody/ARitem/acsCode/pattern/@numberingOrg) [Optional]</p> <p>- nota: <i>this attribute should be used either single or coupled with "listName" and "listVersion"</i></p> <p>(XPath ACSDesRequest/TRheader/refDoc/season/@numberingOrg) [Optional]</p> <p>(XPath ACSDesRequest/ARbody/ARitem/acsCode/art/@numberingOrg) [Optional]</p> <p>- nota: <i>this attribute should be used either single or coupled with "listName" and "listVersion"</i></p> <p>(XPath ACSDesRequest/shipInfo/actualPackageUnit/packagesList/packageIdentification/serialN/@numberingOrg) [Optional]</p> <p>- nota: <i>here the issuer of the serial number must be specified (when different from the Supplier)</i></p> <p>(XPath ACSDesRequest/TRheader/buyer/id/@numberingOrg) [Optional]</p> <p>(XPath ACSDesRequest/ARbody/ARitem/shipInfo/actualPackageUnit/note/@numberingOrg) [Optional]</p> <p>(XPath ACSDesRequest/ARbody/ARitem/acsCode/color/@numberingOrg) [Optional]</p> <p>- nota: <i>this attribute should be used either single or coupled with "listName" and "listVersion"</i></p> <p>(XPath ACSDesRequest/shipInfo/actualPackageUnit/packagesList/packageIdentification/packageN/@numberingOrg) [Optional]</p> <p>(XPath ACSDesRequest/ARbody/ARitem/itemsList/qualityLevel/@numberingOrg) [Optional]</p> <p>(XPath ACSDesRequest/ARbody/ARitem/itemsList/itemIdentification/serialN/@numberingOrg) [Optional]</p> <p>- nota: <i>here the issuer of the serial number must be specified (when different from the Supplier)</i></p> <p>(XPath ACSDesRequest/ARbody/ARitem/refDoc/docID/@numberingOrg) [Optional]</p> <p>- nota: <i>here can be specified whose document numbering is used (e.g.: Client, Supplier, ..)</i></p> <p>(XPath ACSDesRequest/ARbody/ARitem/note/@numberingOrg) [Optional]</p> <p>(XPath ACSDesRequest/ARbody/ARitem/refDoc/attachment/fileName/@numberingOrg) [Optional]</p>
--	---

	<p>(XPath ACSDesRequest/ARbody/ARitem/refDoc/season/@numberingOrg) [Optional]</p> <p>(XPath ACSDesRequest/TRheader/refDoc/docID/@numberingOrg) [Optional]</p> <p>- nota: <i>here can be specified whose document numbering is used (e.g.: Client, Supplier, ..)</i></p> <p>(XPath ACSDesRequest/ARbody/ARitem/packageN/@numberingOrg) [Optional]</p> <p>(XPath ACSDesRequest/ARbody/ARitem/acsCode/@numberingOrg) [Optional]</p> <p>(XPath ACSDesRequest/shipInfo/actualPackageUnit/itemsList/qualityLevel/@numberingOrg) [Optional]</p> <p>(XPath ACSDesRequest/shipInfo/actualPackageUnit/note/@numberingOrg) [Optional]</p> <p>(XPath ACSDesRequest/shipInfo/actualPackageUnit/itemsList/itemIdentification/serialN/@numberingOrg) [Optional]</p> <p>- nota: <i>here the issuer of the serial number must be specified (when different from the Supplier)</i></p> <p>(XPath ACSDesRequest/ARbody/ARitem/csRange/@numberingOrg) [Optional]</p> <p>(XPath ACSDesRequest/ARbody/ARitem/shipInfo/actualPackageUnit/packagesList/packageIdentification/serialN/@numberingOrg) [Optional]</p> <p>- nota: <i>here the issuer of the serial number must be specified (when different from the Supplier)</i></p> <p>(XPath ACSDesRequest/ARbody/ARitem/shipInfo/actualPackageUnit/itemsList/qualityLevel/@numberingOrg) [Optional]</p> <p>(XPath ACSDesRequest/TRheader/supplier/additionalIdentifier/@numberingOrg) [Optional]</p> <p>- nota: <i>here the issuer of the identifier must be specified</i></p> <p>(XPath ACSDesRequest/TRheader/supplier/id/@numberingOrg) [Optional]</p> <p>(XPath ACSDesRequest/ARbody/ARitem/shipInfo/actualPackageUnit/packagesList/packageIdentification/packageN/@numberingOrg) [Optional]</p> <p>(XPath ACSDesRequest/ARbody/ARitem/shipInfo/actualPackageUnit/itemsList/itemIdentification/serialN/@numberingOrg) [Optional]</p> <p>- nota: <i>here the issuer of the serial number must be specified (when different from the Supplier)</i></p> <p>(XPath ACSDesRequest/TRheader/buyer/additionalIdentifier/@numberingOrg) [Optional]</p> <p>- nota: <i>here the issuer of the identifier must be specified</i></p> <p>(XPath ACSDesRequest/ARbody/ARitem/acsCode/added/@numberingOrg) [Optional]</p> <p>(XPath ACSDesRequest/shipInfo/actualPackageUnit/packageModelCode/@numberingOrg) [Optional]</p> <p>(XPath ACSDesRequest/ARbody/ARitem/csRange/color/@numberingOrg) [Optional]</p> <p>- nota: <i>this attribute should be used either single or coupled with "listName" and "listVersion"</i></p>
package	<p>code specifying the type of transport package</p> <p>- base type: string, cod. table: T11</p> <p>http://www.ebiz.enea.it/moda-ml/repository/codelist/draft/gc_T11.xml</p> <p>(XPath ACSDesRequest/ARbody/ARitem/shipInfo/actualPackageUnit/package) 0-1</p> <p>(XPath ACSDesRequest/ARbody/ARitem/shipInfo/packages/package) 1-1</p> <p>(XPath ACSDesRequest/shipInfo/actualPackageUnit/package) 0-1</p> <p>(XPath ACSDesRequest/shipInfo/packages/package) 1-1</p>
@packageContainerN	<p>reference usable to indicate the outer package containing this package</p> <p>- base type: string, max length: 40,</p> <p>(XPath ACSDesRequest/shipInfo/actualPackageUnit/packageIdentification/packageN/@packageContainerN) [Optional]</p> <p>(XPath ACSDesRequest/ARbody/ARitem/shipInfo/packages/packageN/@packageContainerN) [Optional]</p> <p>(XPath ACSDesRequest/shipInfo/packages/packageN/@packageContainerN) [Optional]</p>

	<p>(XPath ACSDesRequest/shipInfo/actualPackageUnit/packagesList/packageIdentification/packageN/@packageContainerN) [Optional]</p> <p>(XPath ACSDesRequest/ARbody/ARitem/shipInfo/actualPackageUnit/packagesList/packageIdentification/packageN/@packageContainerN) [Optional]</p> <p>(XPath ACSDesRequest/ARbody/ARitem/packageN/@packageContainerN) [Optional]</p> <p>(XPath ACSDesRequest/ARbody/ARitem/shipInfo/actualPackageUnit/packageIdentification/packageN/@packageContainerN) [Optional]</p>
@packageLevel	<p>level used to indicate the hierarchical structure of the packages (from outer to inner levels)</p> <p>- base type: positiveInteger, min inclusive: 1, max inclusive: 9,</p> <p>(XPath ACSDesRequest/ARbody/ARitem/shipInfo/packages/@packageLevel) [Optional]</p> <p>- nota: <i>number fixing the level of the package in the transport stucture (from inner to outer). Must either be used for all package types or not be used</i></p> <p>(XPath ACSDesRequest/shipInfo/packages/@packageLevel) [Optional]</p> <p>- nota: <i>number fixing the level of the package in the transport stucture (from inner to outer). Must either be used for all package types or not be used</i></p> <p>(XPath ACSDesRequest/shipInfo/actualPackageUnit/@packageLevel) [Optional]</p> <p>(XPath ACSDesRequest/ARbody/ARitem/shipInfo/actualPackageUnit/@packageLevel) [Optional]</p>
packageModelCode	<p>a code (eg a barcode) identifying the type of packaging</p> <p>- base type: string,</p> <p>(XPath ACSDesRequest/shipInfo/packages/packageModelCode) 0-1</p> <p>(XPath ACSDesRequest/ARbody/ARitem/shipInfo/actualPackageUnit/packageModelCode) 0-1</p> <p>(XPath ACSDesRequest/ARbody/ARitem/shipInfo/packages/packageModelCode) 0-1</p> <p>(XPath ACSDesRequest/shipInfo/actualPackageUnit/packageModelCode) 0-1</p>
packageN	<p>serial number used to identify a transport package</p> <p>- base type: string, max length: 40,</p> <p>(XPath ACSDesRequest/ARbody/ARitem/packageN) 0-unbounded</p> <p>(XPath ACSDesRequest/shipInfo/packages/packageN) 0-unbounded</p> <p>- note: <i>here the serial no.s of the packages can be identified</i></p> <p>(XPath ACSDesRequest/ARbody/ARitem/shipInfo/packages/packageN) 0-unbounded</p> <p>- note: <i>here the serial no.s of the packages can be identified</i></p> <p>(XPath ACSDesRequest/shipInfo/actualPackageUnit/packagesList/packageIdentification/packageN) 1-1</p> <p>(XPath ACSDesRequest/ARbody/ARitem/shipInfo/actualPackageUnit/packagesList/packageIdentification/packageN) 1-1</p> <p>(XPath ACSDesRequest/shipInfo/actualPackageUnit/packageIdentification/packageN) 1-1</p> <p>(XPath ACSDesRequest/ARbody/ARitem/shipInfo/actualPackageUnit/packageIdentification/packageN) 1-1</p>
packageQty	<p>quantity of the specified transport packages</p> <p>- base type: positiveInteger,</p> <p>(XPath ACSDesRequest/shipInfo/packages/packageQty) 0-1</p> <p>- note: <i>total for the type of package</i></p> <p>(XPath ACSDesRequest/ARbody/ARitem/shipInfo/packages/packageQty) 0-1</p> <p>- note: <i>total for the type of package</i></p>
packageText	<p>denomination of the type of transport package (text)</p> <p>- base type: string, max length: 80,</p> <p>(XPath ACSDesRequest/shipInfo/packages/packageText) 1-1</p>

	<p>(XPath ACSDesRequest/ARbody/ARitem/shipInfo/actualPackageUnit/packageText) 0-1 (XPath ACSDesRequest/ARbody/ARitem/shipInfo/packages/packageText) 1-1 (XPath ACSDesRequest/shipInfo/actualPackageUnit/packageText) 0-1</p>
pattern	<p>pattern/design number of the product, when not included in the article code - base type: string, max length: 15, (XPath ACSDesRequest/ARbody/ARitem/acsCode/pattern) 0-1</p>
person	<p>name of the contact person within a Party - base type: string, max length: 40, (XPath ACSDesRequest/ARbody/ARitem/thirdParty/person) 0-1 (XPath ACSDesRequest/TRheader/buyer/person) 0-1 (XPath ACSDesRequest/TRheader/supplier/person) 0-1 (XPath ACSDesRequest/TRheader/thirdParty/person) 0-1</p>
@phone	<p>phone number of the contact person within a Party - base type: string, max length: 35, (XPath ACSDesRequest/TRheader/buyer/person/@phone) [Optional] (XPath ACSDesRequest/TRheader/thirdParty/person/@phone) [Optional] (XPath ACSDesRequest/TRheader/supplier/person/@phone) [Optional] (XPath ACSDesRequest/ARbody/ARitem/thirdParty/person/@phone) [Optional]</p>
pieceInnWrap1	<p>code specifying the type of inner wrapping/packing used for the fabric piece - base type: string, cod. table: T4 http://www.ebiz.enea.it/moda-ml/repository/codelist/draft/gc_T4.xml (XPath ACSDesRequest/shipInfo/packages/handlingChar/piecePack/pieceInnWrap1) 1-1 (XPath ACSDesRequest/ARbody/ARitem/shipInfo/packages/handlingChar/piecePack/pieceInnWrap1) 1-1</p>
pieceInnWrap2	<p>code sub-specifying the type of inner wrapping/packing used for the fabric piece - base type: string, cod. table: T5 http://www.ebiz.enea.it/moda-ml/repository/codelist/draft/gc_T5.xml (XPath ACSDesRequest/shipInfo/packages/handlingChar/piecePack/pieceInnWrap2) 0-1 (XPath ACSDesRequest/ARbody/ARitem/shipInfo/packages/handlingChar/piecePack/pieceInnWrap2) 0-1</p>
pieceOutWrap	<p>code specifying the type of outer wrapping or packing used for the fabric piece - base type: string, cod. table: T6 http://www.ebiz.enea.it/moda-ml/repository/codelist/draft/gc_T6.xml (XPath ACSDesRequest/shipInfo/packages/handlingChar/piecePack/pieceOutWrap) 0-1 (XPath ACSDesRequest/ARbody/ARitem/shipInfo/packages/handlingChar/piecePack/pieceOutWrap) 0-1</p>
piecePackText	<p>free text specifying the type of wrapping or packing used for the fabric piece - base type: string, max length: 250, (XPath ACSDesRequest/ARbody/ARitem/shipInfo/packages/handlingChar/piecePack/piecePackText) 1-1 (XPath ACSDesRequest/shipInfo/packages/handlingChar/piecePack/piecePackText) 1-1</p>
postCode	<p>code defining the postal zone - base type: string, max length: 10, (XPath ACSDesRequest/TRheader/supplier/postCode) 0-1 (XPath ACSDesRequest/TRheader/thirdParty/postCode) 0-1 (XPath ACSDesRequest/TRheader/buyer/postCode) 0-1 (XPath ACSDesRequest/ARbody/ARitem/thirdParty/postCode) 0-1</p>
@progr	<p>progressive number in the sequence - base type: positiveInteger, min inclusive: 1, (XPath ACSDesRequest/ARbody/ARitem/shipInfo/packages/fillingCriterion/@progr) [Optional]</p>

	<p>(XPath ACSDesRequest/ARbody/ARitem/shipInfo/transInfo/@progr) [Optional] - nota: <i>Indicates the position of the leg in a sequence of transport legs.</i> (XPath ACSDesRequest/shipInfo/packages/fillingCriterion/@progr) [Optional] (XPath ACSDesRequest/shipInfo/transInfo/@progr) [Optional] - nota: <i>Indicates the position of the leg in a sequence of transport legs.</i></p>
qty	<p>net quantity of the article or object correlated, qualified by the function of the document (ordering, delivering, ..) and by the context - base type: decimal, min inclusive: 0, fraction digits: 2, (XPath ACSDesRequest/ARbody/ARitem/qty) 1-2</p> <hr/> <p>AAAA-WARNING! - text not AVAILABLE n. 245 - In=en (XPath ACSDesRequest/ARbody/ARitem/csRange/sizeMatrix/sizeRow/qty) 0-1</p>
qualityLevel	<p>the product quality level (first choice, second choice,...). - base type: string, (XPath ACSDesRequest/shipInfo/actualPackageUnit/itemsList/qualityLevel) 0-1 (XPath ACSDesRequest/ARbody/ARitem/csRange/sizeMatrix/sizeRow/itemsList/qualityLevel) 0-1 (XPath ACSDesRequest/ARbody/ARitem/itemsList/qualityLevel) 0-1 (XPath ACSDesRequest/ARbody/ARitem/shipInfo/actualPackageUnit/itemsList/qualityLevel) 0-1</p>
@reelMat	<p>type of material of which a package for yarn is made - base type: string, cod. table: T30 http://www.ebiz.enea.it/moda-ml/repository/codelist/draft/gc_T30.xml (XPath ACSDesRequest/ARbody/ARitem/shipInfo/packages/handlingChar/yarnPack/yarnReel/@reelMat) [Optional] (XPath ACSDesRequest/shipInfo/packages/handlingChar/yarnPack/yarnReel/@reelMat) [Optional]</p>
@reelType	<p>type of package used for a yarn product - base type: string, cod. table: T29 http://www.ebiz.enea.it/moda-ml/repository/codelist/draft/gc_T29.xml (XPath ACSDesRequest/shipInfo/packages/handlingChar/yarnPack/yarnReel/@reelType) [Required] (XPath ACSDesRequest/ARbody/ARitem/shipInfo/packages/handlingChar/yarnPack/yarnReel/@reelType) [Required]</p>
@role	<p>Third Party role qualifier - base type: string, cod. table: NT2 http://www.ebiz.enea.it/moda-ml/repository/codelist/draft/gc_NT2.xml (XPath ACSDesRequest/TRheader/thirdParty/@role) [Required] (XPath ACSDesRequest/ARbody/ARitem/thirdParty/@role) [Required]</p>
season	<p>sale season; defined as: season (1 crt) + year (4 crt) - season: S/S=1 A/W=2 Spring=3 Summer=4 Autumn=5 Winter=6: for more than four seasons use alphabetic sequence: 1st season=A 2nd season=B etc.etc. - base type: string, max length: 15, (XPath ACSDesRequest/TRheader/refDoc/season) 0-1 - note: <i>here indicates the season to which the referenced document belongs</i> (XPath ACSDesRequest/ARbody/ARitem/refDoc/season) 0-1 - note: <i>here indicates the season to which the referenced document belongs</i></p>
@sender	<p>qualifier that specifies the Party issuing of the document - base type: boolean, (XPath ACSDesRequest/TRheader/thirdParty/@sender) [Optional] - nota: <i>This attribute is mandatory when the STYLESHEET must be used</i> (XPath ACSDesRequest/ARbody/ARitem/thirdParty/@sender) [Optional] - nota: <i>This attribute is mandatory when the STYLESHEET must be used</i> (XPath ACSDesRequest/TRheader/supplier/@sender) [Optional] - nota: <i>This attribute is mandatory when the STYLESHEET must be used</i> (XPath ACSDesRequest/TRheader/buyer/@sender) [Optional] - nota: <i>This attribute is mandatory when the STYLESHEET must be used</i></p>

serialN	<p>serial number used for the identification of a physical unit - base type: string, max length: 250, (XPath ACSDesRequest/ARbody/ARitem/csRange/sizeMatrix/sizeRow/itemsList/itemIdentification/serialN) 1-9</p> <hr/> <p>AAAA-WARNING! - text not AVAILABLE n. 245 - In=en - note: multiple values of serialN are allowed for different representations of the serial identifier of the same product unit. Instances of serialN must differ at least for one value of numberingOrg and idQualifier. (XPath ACSDesRequest/shipInfo/actualPackageUnit/itemsList/itemIdentification/serialN) 1-9</p> <hr/> <p>AAAA-WARNING! - text not AVAILABLE n. 245 - In=en - note: multiple values of serialN are allowed for different representations of the serial identifier of the same product unit. Instances of serialN must differ at least for one value of numberingOrg and idQualifier. (XPath ACSDesRequest/ARbody/ARitem/itemsList/itemIdentification/serialN) 1-9</p> <hr/> <p>AAAA-WARNING! - text not AVAILABLE n. 245 - In=en - note: multiple values of serialN are allowed for different representations of the serial identifier of the same package unit. Instances of serialN must differ at least for one value of numberingOrg and idQualifier. (XPath ACSDesRequest/shipInfo/actualPackageUnit/packageIdentification/serialN) 0-9 - note: multiple values of serialN are allowed in order to provide different representations of the serial identifier of the same package unit. Different instances of serialN must differ at least for one value of idQualifier or numberingOrg (XPath ACSDesRequest/ARbody/ARitem/shipInfo/actualPackageUnit/itemsList/itemIdentification/serialN) 1-9</p> <hr/> <p>AAAA-WARNING! - text not AVAILABLE n. 245 - In=en - note: multiple values of serialN are allowed for different representations of the serial identifier of the same package unit. Instances of serialN must differ at least for one value of numberingOrg and idQualifier. (XPath ACSDesRequest/shipInfo/actualPackageUnit/packagesList/packageIdentification/serialN) 0-9 - note: multiple values of serialN are allowed in order to provide different representations of the serial identifier of the same package unit. Different instances of serialN must differ at least for one value of idQualifier or numberingOrg (XPath ACSDesRequest/ARbody/ARitem/shipInfo/actualPackageUnit/packageIdentification/serialN) 0-9 - note: multiple values of serialN are allowed in order to provide different representations of the serial identifier of the same package unit. Different instances of serialN must differ at least for one value of idQualifier or numberingOrg (XPath ACSDesRequest/ARbody/ARitem/shipInfo/actualPackageUnit/packagesList/packageIdentification/serialN) 0-9 - note: multiple values of serialN are allowed in order to provide different representations of the serial identifier of the same package unit. Different instances of serialN must differ at least for one value of idQualifier or numberingOrg</p>
size	<p>size number of a fashion product (knitwear, clothing, ..) - base type: string, max length: 15, (XPath ACSDesRequest/ARbody/ARitem/csRange/sizeMatrix/sizeRow/size) 1-1</p>
@sizeSystemBase	<p>base of the size system - base type: string, cod. table: T423 http://www.ebiz.enea.it/moda-ml/repository/codelist/draft/gc_T423.xml (XPath ACSDesRequest/ARbody/ARitem/csRange/@sizeSystemBase) [Optional]</p>
@sizeSystemID	<p>the identifier of the size system. - base type: string, (XPath ACSDesRequest/ARbody/ARitem/csRange/@sizeSystemID) [Optional]</p>
@sizeSystemNat	<p>nation or agency identifying the size system - base type: string, cod. table: T421 http://www.ebiz.enea.it/moda-ml/repository/codelist/draft/gc_T421.xml (XPath ACSDesRequest/ARbody/ARitem/csRange/@sizeSystemNat) [Optional]</p>

@sizeSystemSeg	market segment identifying the size system - base type: string, cod. table: T422 http://www.ebiz.enea.it/moda-ml/repository/codelist/draft/gc_T422.xml (XPath ACSDesRequest/ARbody/ARitem/csRange/@sizeSystemSeg) [Optional]
sortableIndicator	It states if the item can be automatically sorted. - base type: boolean, (XPath ACSDesRequest/shipInfo/packages/handlingChar/sortableIndicator) 0-1 (XPath ACSDesRequest/ARbody/ARitem/shipInfo/packages/handlingChar/sortableIndicator) 0-1
stackabilityLevel	This value indicates the level at which the item can be stacked. - base type: integer, (XPath ACSDesRequest/shipInfo/packages/handlingChar/stackabilityLevel) 0-1 (XPath ACSDesRequest/ARbody/ARitem/shipInfo/packages/handlingChar/stackabilityLevel) 0-1
street	street and building number identifying a location - base type: string, max length: 80, (XPath ACSDesRequest/TRheader/thirdParty/street) 0-1 (XPath ACSDesRequest/ARbody/ARitem/thirdParty/street) 0-1 (XPath ACSDesRequest/TRheader/supplier/street) 0-1 (XPath ACSDesRequest/TRheader/buyer/street) 0-1
subCountry	short name or code of the sub-country entity - base type: string, max length: 9, (XPath ACSDesRequest/TRheader/supplier/subCountry) 0-1 (XPath ACSDesRequest/ARbody/ARitem/thirdParty/subCountry) 0-1 (XPath ACSDesRequest/TRheader/thirdParty/subCountry) 0-1 (XPath ACSDesRequest/TRheader/buyer/subCountry) 0-1
subDept	name or code of a contact department within a Party - base type: string, max length: 40, (XPath ACSDesRequest/TRheader/buyer/subDept) 0-1 (XPath ACSDesRequest/TRheader/thirdParty/subDept) 0-1 (XPath ACSDesRequest/TRheader/supplier/subDept) 0-1 (XPath ACSDesRequest/ARbody/ARitem/thirdParty/subDept) 0-1
@TID	serial number wired into the RFID chip - base type: string, (XPath ACSDesRequest/ARbody/ARitem/shipInfo/packages/EPClist/EPC/@TID) [Optional] (XPath ACSDesRequest/shipInfo/packages/EPClist/EPC/@TID) [Optional]
transCondition	special condition of transport or special service requested to the Forwarder - base type: string, cod. table: T38 http://www.ebiz.enea.it/moda-ml/repository/codelist/draft/gc_T38.xml (XPath ACSDesRequest/ARbody/ARitem/shipInfo/transInfo/transCondition) 0-3 (XPath ACSDesRequest/shipInfo/transInfo/transCondition) 0-3
transConditionText	free text description of the special condition of transport or special service requested to the Forwarder - base type: string, max length: 250, (XPath ACSDesRequest/ARbody/ARitem/shipInfo/transInfo/transConditionText) 0-1 (XPath ACSDesRequest/shipInfo/transInfo/transConditionText) 0-1
transMeans	means of transport, in general or referred to a specific leg - base type: string, cod. table: T40 http://www.ebiz.enea.it/moda-ml/repository/codelist/draft/gc_T40.xml (XPath ACSDesRequest/ARbody/ARitem/shipInfo/transInfo/transMeans) 0-1 (XPath ACSDesRequest/shipInfo/transInfo/transMeans) 0-1
transMode	way of transport, in general or referred to the specified leg - base type: string, cod. table: T8 http://www.ebiz.enea.it/moda-ml/repository/codelist/draft/gc_T8.xml (XPath ACSDesRequest/shipInfo/transInfo/transMode) 1-1 (XPath ACSDesRequest/ARbody/ARitem/shipInfo/transInfo/transMode) 1-1

@transReason	reason for the transport - base type: string, cod. table: NT11 http://www.ebiz.enea.it/moda-ml/repository/codelist/draft/gc_NT11.xml (XPath ACSDesRequest/ARbody/ARitem/shipInfo/transInfo/@transReason) [Optional] (XPath ACSDesRequest/shipInfo/transInfo/@transReason) [Optional]
@TRtype	type of Despatch request - base type: string, cod. table: NT9 http://www.ebiz.enea.it/moda-ml/repository/codelist/draft/gc_NT9.xml (XPath ACSDesRequest/@TRtype) [Optional] [Default= STD]
@uid	unique element identifier within the xml document - base type: string, (XPath ACSDesRequest/TRheader/refDoc/attachment/@uid) [Optional] (XPath ACSDesRequest/ARbody/ARitem/refDoc/attachment/@uid) [Optional]
@um	specification of the unit of measure - base type: string, cod. table: NT7 http://www.ebiz.enea.it/moda-ml/repository/codelist/draft/gc_NT7.xml (XPath ACSDesRequest/shipInfo/actualPackageUnit/netWeight/@um) [Required] (XPath ACSDesRequest/ARbody/ARitem/shipInfo/actualPackageUnit/packageDim/width/@um) [Required] (XPath ACSDesRequest/shipInfo/actualPackageUnit/packageDim/length/@um) [Required] (XPath ACSDesRequest/ARbody/ARitem/shipInfo/actualPackageUnit/packageDim/height/@um) [Required] (XPath ACSDesRequest/shipInfo/actualPackageUnit/grossWeight/@um) [Required] (XPath ACSDesRequest/shipInfo/actualPackageUnit/volume/@um) [Required] (XPath ACSDesRequest/shipInfo/actualPackageUnit/packageDim/width/@um) [Required] (XPath ACSDesRequest/ARbody/ARitem/qty/@um) [Required] (XPath ACSDesRequest/ARbody/ARitem/shipInfo/actualPackageUnit/netWeight/@um) [Required] (XPath ACSDesRequest/ARbody/ARitem/shipInfo/actualPackageUnit/volume/@um) [Required] (XPath ACSDesRequest/ARbody/ARitem/shipInfo/actualPackageUnit/packageDim/length/@um) [Required] (XPath ACSDesRequest/ARbody/ARitem/shipInfo/actualPackageUnit/grossWeight/@um) [Required] (XPath ACSDesRequest/shipInfo/actualPackageUnit/packageDim/height/@um) [Required] (XPath ACSDesRequest/ARbody/ARitem/shipInfo/packages/handlingChar/yarnPack/yarnReel/yarnReelH/@um) [Required] (XPath ACSDesRequest/shipInfo/packages/handlingChar/yarnPack/yarnReel/yarnReelH/@um) [Required] (XPath ACSDesRequest/ARbody/ARitem/shipInfo/transInfo/grossWeight/@um) [Required] (XPath ACSDesRequest/ARbody/ARitem/shipInfo/packages/handlingChar/yarnPack/yarnReel/yarnReelD/@um) [Required] (XPath ACSDesRequest/shipInfo/transInfo/grossWeight/@um) [Required] (XPath ACSDesRequest/shipInfo/packages/handlingChar/yarnPack/yarnReel/yarnReelQty/@um) [Required] (XPath ACSDesRequest/ARbody/ARitem/shipInfo/packages/handlingChar/yarnPack/yarnReel/yarnReelQty/@um) [Required] (XPath ACSDesRequest/shipInfo/transInfo/netWeight/@um) [Required] (XPath ACSDesRequest/shipInfo/packages/packageDim/height/@um) [Required] (XPath ACSDesRequest/shipInfo/packages/packageDim/width/@um) [Required] (XPath ACSDesRequest/shipInfo/packages/handlingChar/yarnPack/yarnReel/yarnReelD/@um) [Required]

	<p>(XPath ACSDesRequest/ARbody/ARitem/shipInfo/transInfo/netWeight/@um) [Required]</p> <p>(XPath ACSDesRequest/ARbody/ARitem/shipInfo/packages/packageDim/width/@um) [Required]</p> <p>(XPath ACSDesRequest/ARbody/ARitem/shipInfo/packages/packageDim/height/@um) [Required]</p> <p>(XPath ACSDesRequest/shipInfo/packages/packageDim/length/@um) [Required]</p> <p>(XPath ACSDesRequest/ARbody/ARitem/shipInfo/packages/packageDim/length/@um) [Required]</p> <p>(XPath ACSDesRequest/shipInfo/packages/handlingChar/volume/@um) [Required]</p> <p>(XPath ACSDesRequest/ARbody/ARitem/csRange/sizeMatrix/sizeRow/qty/@um) [Required]</p> <p>(XPath ACSDesRequest/shipInfo/packages/handlingChar/grossWeight/@um) [Required]</p> <p>(XPath ACSDesRequest/ARbody/ARitem/shipInfo/packages/handlingChar/grossWeight/@um) [Required]</p> <p>(XPath ACSDesRequest/ARbody/ARitem/shipInfo/packages/itemsPerPackage/@um) [Required]</p> <p>(XPath ACSDesRequest/shipInfo/packages/minItemsPerPackage/@um) [Required]</p> <p>(XPath ACSDesRequest/shipInfo/packages/itemsPerPackage/@um) [Required]</p> <p>(XPath ACSDesRequest/ARbody/ARitem/shipInfo/packages/minItemsPerPackage/@um) [Required]</p> <p>(XPath ACSDesRequest/ARbody/ARitem/shipInfo/packages/handlingChar/netWeight/@um) [Required]</p> <p>(XPath ACSDesRequest/shipInfo/packages/handlingChar/netWeight/@um) [Required]</p> <p>(XPath ACSDesRequest/ARbody/ARitem/shipInfo/packages/handlingChar/volume/@um) [Required]</p>
uri	<p>Uniform Resource Identifier (URI) that identifies the external object as an Internet resource</p> <p>- base type: normalizedString,</p> <p>(XPath ACSDesRequest/TRheader/refDoc/attachment/externalReference/uri) 1-1</p> <p>(XPath ACSDesRequest/ARbody/ARitem/refDoc/attachment/externalReference/uri) 1-1</p>
@useProfile	<p>use profile to which the present document is compliant if it was agreed by the parties. It is suggested a URI with reference to the firm or the URL of the profile.</p> <p>- base type: string,</p> <p>(XPath ACSDesRequest/@useProfile) [Optional]</p>
variantCode	<p>Code of variant used for fashion product.</p> <p>- base type: string,</p> <p>(XPath ACSDesRequest/ARbody/ARitem/csRange/garmentVariant/variantCode) 1-1</p>
variantType	<p>Type of variant used for fashion product (examples: 'treatment', 'washing type', 'size class',...)</p> <p>- base type: string,</p> <p>(XPath ACSDesRequest/ARbody/ARitem/csRange/garmentVariant/variantType) 1-1</p>
@VAT	<p>VAT rate or code (DEPRECATED, use dtScheme element)</p> <p>- base type: string, cod. table: NT16</p> <p>http://www.ebiz.enea.it/moda-ml/repository/codelist/draft/gc_NT16.xml</p> <p>(XPath ACSDesRequest/ARbody/ARitem/lineN/@VAT) [Optional]</p> <p>- nota: <i>Deprecated, prefer dtScheme when available.</i></p> <p>(XPath ACSDesRequest/ARbody/ARitem/thirdParty/@VAT) [Optional]</p> <p>(XPath ACSDesRequest/TRheader/thirdParty/@VAT) [Optional]</p>
@version	<p>Dictionary version from which the instance has been created</p> <p>- base type: string, cod. table: NT100</p> <p>http://www.ebiz.enea.it/moda-ml/repository/codelist/draft/gc_NT100.xml</p> <p>(XPath ACSDesRequest/@version) [Optional] [Default= draft]</p>

volume	<p>effective volume of a specified object</p> <p>- base type: decimal, min inclusive: 0, fraction digits: 2, (XPath ACSDesRequest/shipInfo/packages/handlingChar/volume) 0-1 (XPath ACSDesRequest/shipInfo/actualPackageUnit/volume) 0-1 (XPath ACSDesRequest/ARbody/ARitem/shipInfo/packages/handlingChar/volume) 0-1 (XPath ACSDesRequest/ARbody/ARitem/shipInfo/actualPackageUnit/volume) 0-1</p>
width	<p>effective width of a specified object</p> <p>- base type: decimal, min inclusive: 0, fraction digits: 2, (XPath ACSDesRequest/ARbody/ARitem/shipInfo/packages/packageDim/width) 0-1 (XPath ACSDesRequest/ARbody/ARitem/shipInfo/actualPackageUnit/packageDim/width) 0-1 (XPath ACSDesRequest/shipInfo/packages/packageDim/width) 0-1 (XPath ACSDesRequest/shipInfo/actualPackageUnit/packageDim/width) 0-1</p>
yarnConeAngle	<p>tapering angle of the cone on which a yarn is reeled</p> <p>- base type: positiveInteger, (XPath ACSDesRequest/shipInfo/packages/handlingChar/yarnPack/yarnReel/yarnConeAngle) 0-1 (XPath ACSDesRequest/ARbody/ARitem/shipInfo/packages/handlingChar/yarnPack/yarnReel/yarnConeAngle) 0-1</p>
yarnOutWrap	<p>code specifying the type of outer wrapping or packing of a yarn</p> <p>- base type: string, cod. table: T33 http://www.ebiz.enea.it/moda-ml/repository/codelist/draft/gc_T33.xml (XPath ACSDesRequest/shipInfo/packages/handlingChar/yarnPack/yarnOutWrap) 0-1 (XPath ACSDesRequest/ARbody/ARitem/shipInfo/packages/handlingChar/yarnPack/yarnOutWrap) 0-1</p>
yarnOutWrapText	<p>free text specifying the type of outer wrapping or packing of a yarn</p> <p>- base type: string, max length: 250, (XPath ACSDesRequest/ARbody/ARitem/shipInfo/packages/handlingChar/yarnPack/yarnOutWrapText) 0-1 (XPath ACSDesRequest/shipInfo/packages/handlingChar/yarnPack/yarnOutWrapText) 0-1</p>
yarnReelID	<p>diameter of the bobbin used for a yarn product</p> <p>- base type: decimal, min inclusive: 0, fraction digits: 2, (XPath ACSDesRequest/shipInfo/packages/handlingChar/yarnPack/yarnReel/yarnReelID) 0-1 (XPath ACSDesRequest/ARbody/ARitem/shipInfo/packages/handlingChar/yarnPack/yarnReel/yarnReelID) 0-1</p>
yarnReelH	<p>height of the bobbin used a yarn product</p> <p>- base type: decimal, min inclusive: 0, fraction digits: 2, (XPath ACSDesRequest/shipInfo/packages/handlingChar/yarnPack/yarnReel/yarnReelH) 0-1 (XPath ACSDesRequest/ARbody/ARitem/shipInfo/packages/handlingChar/yarnPack/yarnReel/yarnReelH) 0-1</p>
yarnReelQty	<p>quantity of yarn (by weight or length) wound upon a bobbin</p> <p>- base type: decimal, min inclusive: 0, fraction digits: 2, (XPath ACSDesRequest/ARbody/ARitem/shipInfo/packages/handlingChar/yarnPack/yarnReel/yarnReelQty) 0-2 (XPath ACSDesRequest/shipInfo/packages/handlingChar/yarnPack/yarnReel/yarnReelQty) 0-2</p>
yarnReelWrap	<p>type of wrapping in which a package of yarn is wrapped</p> <p>- base type: string, cod. table: T32 http://www.ebiz.enea.it/moda-ml/repository/codelist/draft/gc_T32.xml (XPath ACSDesRequest/ARbody/ARitem/shipInfo/packages/handlingChar/yarnPack/yarnInWrap/yarnReelWrap) 1-1</p>

	(XPath ACSDesRequest/shipInfo/packages/handlingChar/ yarnPack/yarnInWrap/yarnReelWrap) 1-1
--	---

2.3 Suggested best practices

ACSDesRequest/ARbody/ARitem/qty (net quantity of the article or object correlated, qualified by the function of the document (ordering, delivering, ..) and by the context)

this element can have two instances only if the units of measure are different

ACSDesRequest/ARbody/ARitem/csRange/sizeMatrix/

sizeRow/itemsList/itemIdentification/serialN (serial number used for the identification of a physical unit)

in the case of garment with RFID for anti-counterfeiting, RFID EPCGlobal for logistics and NFC for the customer experience there should be three serial elements with pairs of attributes numberingOrg/idQualifier: "CL"/"RFID", "GS1"/"RFID", "CL"/"NFC".

ACSDesRequest/shipInfo/actualPackageUnit/

itemsList/itemIdentification/serialN (serial number used for the identification of a physical unit)

in the case of garment with RFID for anti-counterfeiting, RFID EPCGlobal for logistics and NFC for the customer experience there should be three serial elements with pairs of attributes numberingOrg/idQualifier: "CL"/"RFID", "GS1"/"RFID", "CL"/"NFC".

ACSDesRequest/ARbody/ARitem/itemsList/itemIdentification/serialN (serial number used for the identification of a physical unit)

in the case of garment with RFID for anti-counterfeiting, RFID EPCGlobal for logistics and NFC for the customer experience there should be three serial elements with pairs of attributes numberingOrg/idQualifier: "CL"/"RFID", "GS1"/"RFID", "CL"/"NFC".

ACSDesRequest/ARbody/ARitem/shipInfo/actualPackageUnit/itemsList/itemIdentification/serialN (serial number used for the identification of a physical unit)

in the case of garment with RFID for anti-counterfeiting, RFID EPCGlobal for logistics and NFC for the customer experience there should be three serial elements with pairs of attributes numberingOrg/idQualifier: "CL"/"RFID", "GS1"/"RFID", "CL"/"NFC".

2.4 Enumeration tables

List of enumeration tables used in the XML document. You can find the corresponding codes at:
<http://www.ebiz-tcf.eu/moda-ml/imple/moda-ml-draft.asp?lingua=en&pag=6>

NT100 - eBIZ TCFUpstream version
NT11 - transport causal
NT16 - VAT rate or code
NT18 - message function
NT2 - third party qualifier
NT29 - format of a date
NT3 - data format
NT51 - Filling Criterion for Package homogeneity
NT6 - coding system owner/issuer
NT7 - unit of measure
NT9 - Despatch Request type
T10 - ISO3166 - Country
T11 - transport package type
T21 - type of document
T29 - type of yarn package
T3 - terms of delivery
T30 - support of yarn package - material
T32 - yarn reel wrapping type
T33 - yarn outer packing
T38 - transport conditions
T4 - fabric piece inner packing (wrapping) 1
T40 - type of transport means
T421 - size system: nationality
T422 - size system: market segment
T423 - size system: base
T44 - additional code type
T5 - fabric piece inner packing (wrapping) 2
T6 - fabric piece outer packing
T8 - Modes of Transport

ACKNOWLEDGEMENT



This action is part of the eBIZ-4.0 project, which has received funding from the European Union's COSME Programme (2014 - 2020).

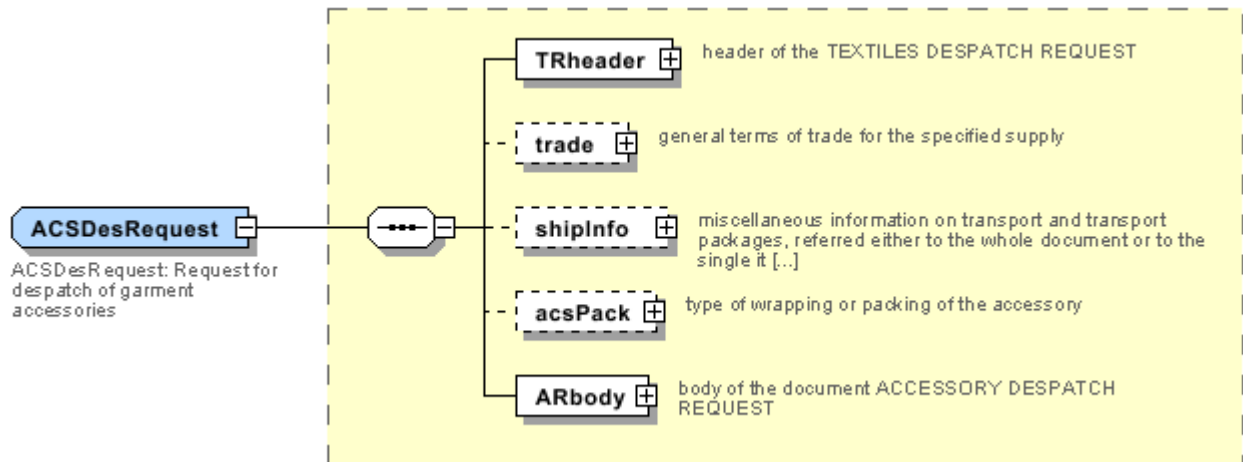
DISCLAIMER

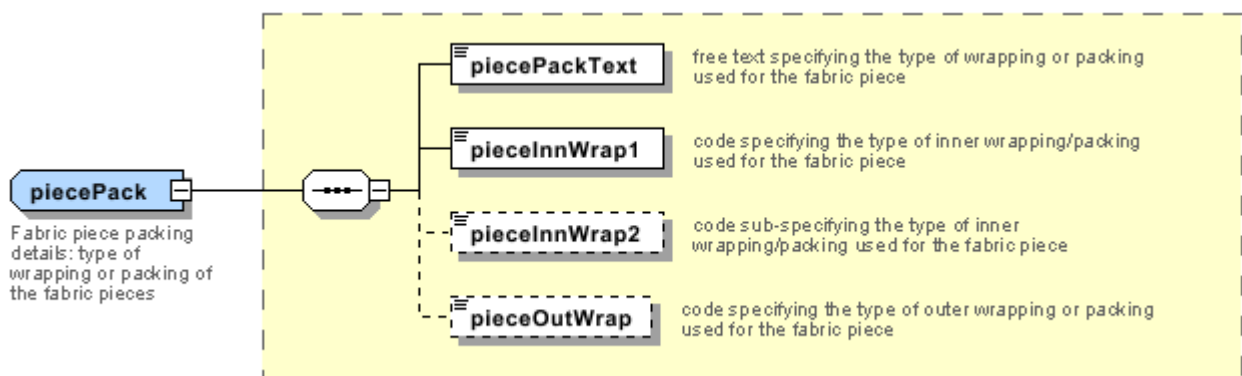
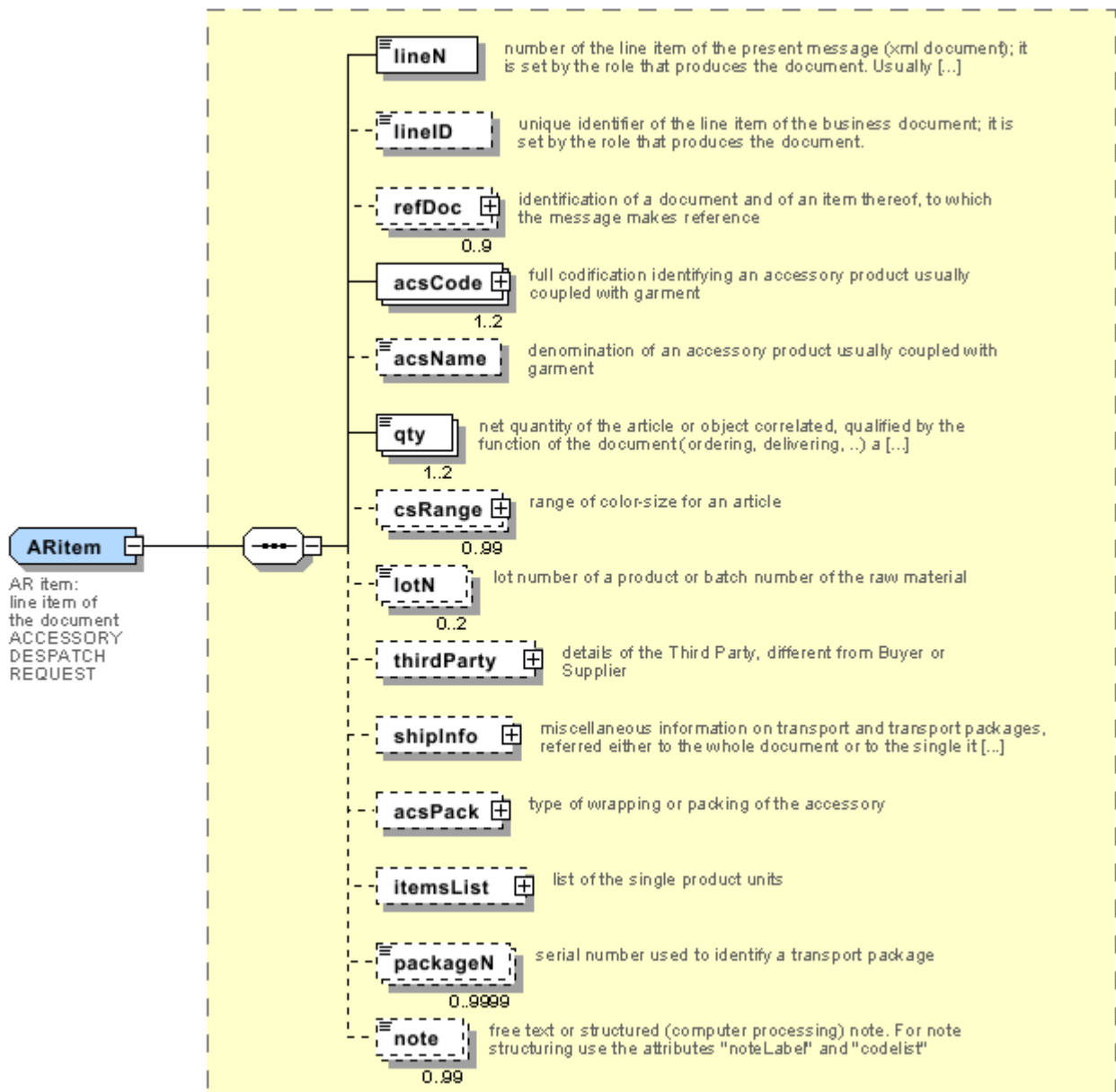
The content of this document represents the views of the authors only and is their sole responsibility; it cannot be considered to reflect the views of the European Commission and/or the Executive Agency for Small and Medium-sized Enterprises (EASME) or any other body of the European Union.

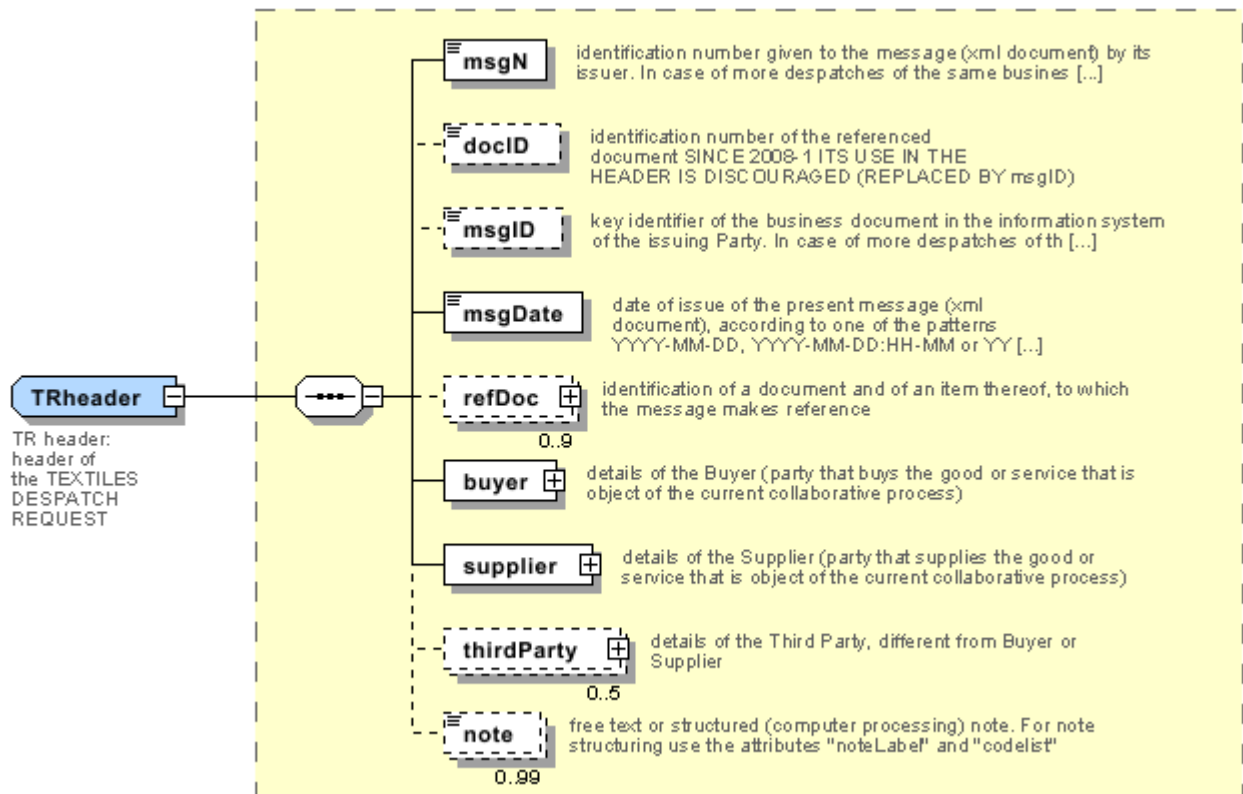
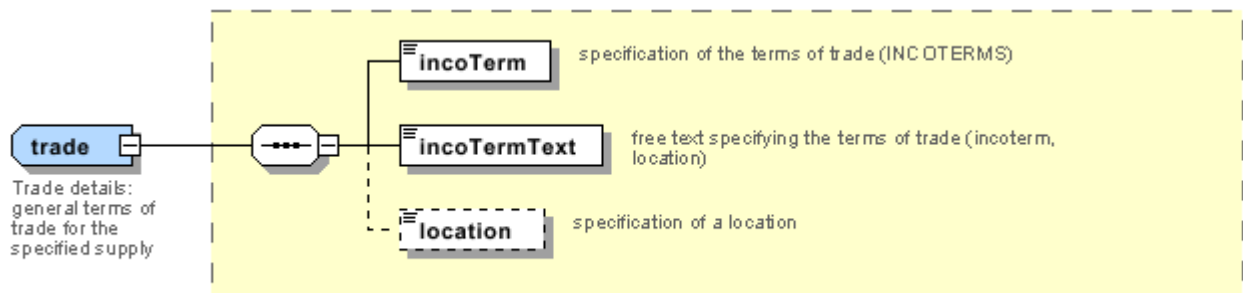
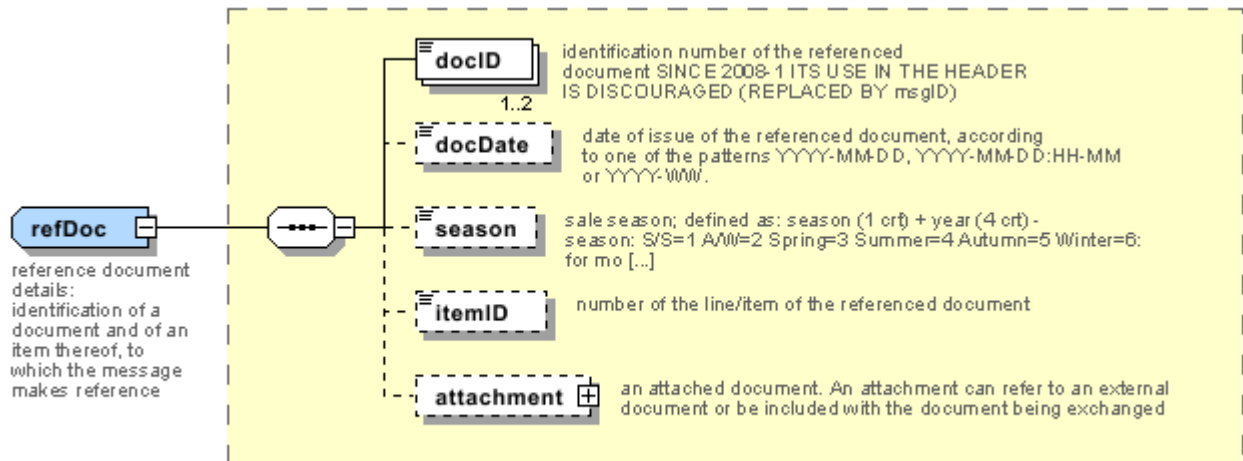
The European Commission and the Agency do not accept any responsibility for use that may be made of the information it contains.

Annex A

Representative images of the principal complex elements' structure.







Annex B

NT100 - eBIZ TCFUpstream version

dictionary version

Agency name: eBIZ

tabella cod.: NT100

File codes list (Generic code): http://www.ebiz.enea.it/moda-ml/repository/codelist/draft/gc_NT100.xml

Code	Description	Adoption note	Date of insertion
2013-1	v2013-1		01/07/2013
2018-1	v2018-1		04/11/2018
draft	draft		08/09/2017

NT11 - transport causal

reason for the transport

Agency name: eBIZ

tabella cod.: NT11

File codes list (Generic code): http://www.ebiz.enea.it/moda-ml/repository/codelist/draft/gc_NT11.xml

Code	Description	Adoption note	Date of insertion
FOC	free of charge		
FRW	return from re-works		
FST	return from storage		
FWW	return from view		
FWK	return from works		
IST	in storage		
NWK	return non-worked		
RJC	return from rejection		
SEL	to sell		
STO	to storage		
VEW	to view		
WRK	to works		

NT16 - VAT rate or code

VAT rate or code (DEPRECATED, use dtScheme element)

tabella cod.: NT16

File codes list (Generic code): http://www.ebiz.enea.it/moda-ml/repository/codelist/draft/gc_NT16.xml

NT18 - message function

function performed by the present message with regards to the transmission

Agency name: eBIZ

tabella cod.: NT18

File codes list (Generic code): http://www.ebiz.enea.it/moda-ml/repository/codelist/draft/gc_NT18.xml

Code	Description	Adoption note	Date of insertion
CA	delete this document		01/07/2013
CP	copy		
OR	original		
RC	re-transmission for data correction		
RT	re-transmission		

NT2 - third party qualifier

Third Party role qualifier

Agency name: eBIZ

tabella cod.: NT2

File codes list (Generic code): http://www.ebiz.enea.it/moda-ml/repository/codelist/draft/gc_NT2.xml

Code	Description	Adoption note	Date of insertion
AG	Sales Agent		
CO	Quality Controller		
DC	Response to		
DF	Invoicee		
DI	Copy to (CC)		28/10/2014
DM	Consignee		
DP	Consignment address (Delivery Party)		
IM	Importer		
OR	Originator		10/09/2014
SP	Forwarder		

TX	Tax Representative		
----	--------------------	--	--

NT29 - format of a date

format used for the date

Agency name: eBIZ

tabella cod.: NT29

File codes list (Generic code): http://www.ebiz.enea.it/moda-ml/repository/codelist/draft/gc_NT29.xml

Code	Description	Adoption note	Date of insertion
D	YYYY-MM-DD		
M	YYYY-MM-DD:HH-MM		
W	YYYY-WW		

NT3 - data format

format of a string according to a customized User rule (local rule)

Agency name: eBIZ

tabella cod.: NT3

File codes list (Generic code): http://www.ebiz.enea.it/moda-ml/repository/codelist/draft/gc_NT3.xml

Code	Description	Adoption note	Date of insertion
EN4	GS1-GLN		01/07/2013
MD	mutually agreed		

NT51 - Filling Criterion for Package homogeneity

Filling Criterion for Package homogeneity

Agency name: eBIZ

tabella cod.: NT51

File codes list (Generic code): http://www.ebiz.enea.it/moda-ml/repository/codelist/draft/gc_NT51.xml

Code	Description	Adoption note	Date of insertion
COL	Colour		08/09/2017
MOD	Model		08/09/2017
SIZ	Size		08/09/2017

NT6 - coding system owner/issuer

code specifying the organisation who has created or owns the coding or numbering system

Agency name: eBIZ

tabella cod.: NT6

File codes list (Generic code): http://www.ebiz.enea.it/moda-ml/repository/codelist/draft/gc_NT6.xml

Code	Description	Adoption note	Date of insertion
CL	Customer/buyer		
CO	Quality Controller		
EN	GS1 (ex-EAN International)		
ES	e-Stockflow		
FO	Supplier		
GS	GS1		01/07/2013
MF	VAT identifier		
ML	Moda-ML		
SP	Service Provider		

NT7 - unit of measure

specification of the unit of measure, it is a sub set of table Unit of Measure Code - UN/ECE REC 20 delivered by United Nations Economic Commission for Europe (UN/ECE)

Agency name: eBIZ / UN/ECE

tabella cod.: NT7

File codes list (Generic code): http://www.ebiz.enea.it/moda-ml/repository/codelist/draft/gc_NT7.xml

Other link: <http://docs.oasis-open.org/ubl/os-UBL-2.1/cl/gc/default/UnitOfMeasureCode-2.1.gc#>

Code	Description	Adoption note	Date of insertion
CMK	square centimetre		20/12/2017
CMQ	cubic centimetre		20/12/2017
CMT	centimetre		
CNE	centiNewton		
CO2TON	ton of CO2		10/09/2014
COUPLES	couples		
DMQ	cubic decimetre		
E37	pixel		11/04/2018

GRM	gram		
HUR	hour		
INH	inch		
KGM	kilogram		
KMT	kilometer		
KWH	kilowatthours		10/09/2014
LBR	pound		
MIN	minute		
MMK	centimetre		20/12/2017
MMK	square millimetre		20/12/2017
MTK	square metre		20/12/2017
MTQ	cubic metre		
MTR	metre		
NMB	numero		
ONZ	ounce		
P1	percent		
PPM	parts per milion		
PZ	piece		
RPM	rounds per metre		
YRD	yard		

NT9 - Despatch Request type

type of Despatch request

Agency name: eBIZ

tabella cod.: NT9

File codes list (Generic code): http://www.ebiz.enea.it/moda-ml/repository/codelist/draft/gc_NT9.xml

Code	Description	Adoption note	Date of insertion
CHG	change		
STD	standard		

T10 - ISO3166 - Country

code of the nation

Agency name: ISO

tabella cod.: T10

File codes list (Generic code): http://www.ebiz.enea.it/moda-ml/repository/codelist/draft/gc_T10.xml

Table not printed: there are 239 elements, more than the maximum specified for printing: 99.

T11 - transport package type

code specifying the type of package used for transport and delivery (subset of UN/ECE 8053 and UBL TransportEquipmentTypeCode-2.1)

Agency name: eBIZ

tabella cod.: T11

File codes list (Generic code): http://www.ebiz.enea.it/moda-ml/repository/codelist/draft/gc_T11.xml

Other link: <http://docs.oasis-open.org/ubl/os-UBL-2.1/cl/gc/default/TransportEquipmentTypeCode-2.1.gc#>

Code	Description	Adoption note	Date of insertion
4A	box, steel		
4C	box, wood		
4G	Box, fibreboard		01/08/2018
4H	Box, plastic		01/08/2018
5H	Bag, woven plastic		01/08/2018
5L	Bag, textile		01/08/2018
5M	Bag, paper		
AJ	Cone		01/08/2018
BL	Bale, compressed		01/08/2018
BN	Bale, non-compressed		01/08/2018
BX	Box		
CI	Canister		01/08/2018
CL	Coil		01/08/2018
CN	Container, not otherwise specified as transport equipment		01/08/2018
CS	Case		01/08/2018
CT	Carton		01/08/2018
EC	Bag, plastic		01/08/2018
ED	Case, with pallet base		01/08/2018
EE	Case, with pallet base, wooden		01/08/2018
EF	Case, with pallet base, cardboard		01/08/2018
EG	Case, with pallet base, plastic		01/08/2018

EH	Case, with pallet base, metal		01/08/2018
FX	Bag, flexible container		01/08/2018
HN	Hanger		01/08/2018
NE	unpacked		
NF	Unpacked or unpackaged, single unit		01/08/2018
NG	Unpacked or unpackaged, multiple units		01/08/2018
OA	Pallet, CHEP 40 cm x 60 cm		01/08/2018
OB	Pallet, CHEP 80 cm x 120 cm		01/08/2018
OC	Pallet, CHEP 100 cm x 120 cm		01/08/2018
OD	Pallet, AS 4068-1993		01/08/2018
OE	Pallet, ISO T11		01/08/2018
PE	europallet (80x120)		
PX	pallet		
QS	box, plastic, solid		
RJ	Rack, clothing hanger		01/08/2018
RL	Reel		01/08/2018
SO	Spool		01/08/2018
TU	tube		
XD	bag, plastics film		
XK	bag,paper, multi-wall, water resistant		
ZZ	Mutually defined		01/08/2018

T21 - type of document

type or class to which the referenced document belongs

Agency name: eBIZ

tabella cod.: T21

File codes list (Generic code): http://www.ebiz.enea.it/moda-ml/repository/codelist/draft/gc_T21.xml

Code	Description	Adoption note	Date of insertion
BOR	blanket order		01/02/2018
CAT	Price catalogue - tech sheet		
CEO	Certificate of origin		13/04/2018
CER	Certificate		13/04/2018
COC	colour card		
CRN	Credit note		08/09/2017

CTO	Checking order		01/07/2013
CTR	Contract		
CXF	CxF3 file		01/07/2013
DAD	Darn order		
DDT	ddt		
DEA	Despatch advise		
DER	Despatch request		
DR	Document Request		02/12/2014
FOR	Forecast		02/12/2014
GSO	Garment stock offer		
GSX	Garment stock offer change		
INV	Invoice		
KCC	Knitting-Clothing Commission Order		02/12/2014
KCI	Garment in Work Inventory Report		02/12/2014
M2M	Made to Measure Production Order		02/12/2014
MAS	Master marker		
MCI	Visual merchandising instruction		13/04/2018
OCH	Order change		
OFF	Offer		
ORD	Purchase order		
ORP	Order response		
OSR	order status request		
OSS	Offer status		02/12/2014
OST	Order status		
OUR	our reference		
QR	Quality Report		02/12/2014
RAI	Raw Material in Work Inventory Report		02/12/2014
RDC	Raw dyeing commission order		
RDH	Raw dyeing order change		
RDR	Raw dyeing order response		
REA	Receiving advise		
REQ	Request for Offer		
RET	Return		02/12/2014
RSC	Spinning commission order		
RSH	Spinning order change		

RSR	Spinning order response		
SCL	process sheet		
TFC	Textile dyeing-finishing commission order		
TFX	Textile Dyeing-Finishing Order Change		02/12/2014
TPC	Textile printing commission order		
TPX	Textile Printing Order Change		02/12/2014
TWI	Textile in work inventory		
VMI	visual merchandising instructions		01/02/2018
WAC	Warping commission order		
WEC	Weaving commission order		
YDC	Yarn dyeing commission order		
YDH	Yarn dyeing order change		
YDR	Yarn dyeing order response		
YTC	Twisting commission order		
YWI	Yarn in work inventory		

T29 - type of yarn package

type of package (roll-up) used for a yarn product

Agency name: eBIZ

tabella cod.: T29

File codes list (Generic code): http://www.ebiz.enea.it/moda-ml/repository/codelist/draft/gc_T29.xml

Code	Description	Adoption note	Date of insertion
CIL	bobbin		
CON	cone		
HNK	hank, skein		01/07/2013
MUF	muff, cake		01/07/2013
SPL	spool		
TUB	tube		
XCO	supercone		

T3 - terms of delivery

specification of the terms of trade (INCOTERMS)

Agency name: Incoterms

tabella cod.: T3

File codes list (Generic code): http://www.ebiz.enea.it/moda-ml/repository/codelist/draft/gc_T3.xml

Code	Description	Adoption note	Date of insertion
CFR	COST AND FREIGHT (named port of destination)		
CIF	COST, INSURANCE AND FREIGHT (named port of destination)		
CIP	CARRIAGE AND INSURANCE PAID (named place of destination)		
CP T	CARRIAGE PAID (named place of destination)		
DAF	DELIVERED AT FRONTIER (named place)	according to Incoterms® 2010 it is obsolete	08/12/2017
DAP	Delivered at Place of destination (named place of destination)	according to Incoterms® 2010	08/12/2017
DAT	Delivered at Terminal (named place of destination)	according to Incoterms® 2010	08/12/2017
DDP	DELIVERED DUTY PAID (named place of destination)		
DDU	DELIVERED DUTY UNPAID (named place of destination)	according to Incoterms® 2010 it is obsolete, use DAP	08/12/2017
DEQ	DELIVERED EX-QUAY (named port of destination)	according to Incoterms® 2010 it is obsolete	08/12/2017
DES	DELIVERED EX-SHIP (named port of destination)	according to Incoterms® 2010 it is obsolete	08/12/2017
EXW	EX WORKS (named place)		
FAS	FREE ALONGSIDE SHIP (named port of shipment)		
FCA	FREE CARRIER (named place)		
FOB	FREE ON BOARD (named port of shipment)		

T30 - support of yarn package - material

type of material of which a package for yarn is made

Agency name: eBIZ

tabella cod.: T30

File codes list (Generic code): http://www.ebiz.enea.it/moda-ml/repository/codelist/draft/gc_T30.xml

Code	Description	Adoption note	Date of insertion
CA	cartoon		
DY	for soft package dyeing		
MT	metallic		01/07/2013
PL	plastic		

T32 - yarn reel wrapping type

type of wrapping in which a package of yarn is wrapped

Agency name: eBIZ

tabella cod.: T32

File codes list (Generic code): http://www.ebiz.enea.it/moda-ml/repository/codelist/draft/gc_T32.xml

Code	Description	Adoption note	Date of insertion
XA	without bag		
XB	paper bag		01/07/2013
XD	plastic film bag		

T33 - yarn outer packing

code specifying the type of outer wrapping or packing of a yarn

Agency name: eBIZ

tabella cod.: T33

File codes list (Generic code): http://www.ebiz.enea.it/moda-ml/repository/codelist/draft/gc_T33.xml

Code	Description	Adoption note	Date of insertion
00			
CB	cartoon box		
CC	cartoon box 18 reels		
CD	cartoon box 36 reels		
XD	plastic film		

T38 - transport conditions

special condition of transport or special service requested to the Forwarder

tabella cod.: T38

File codes list (Generic code): http://www.ebiz.enea.it/moda-ml/repository/codelist/draft/gc_T38.xml

Code	Description	Adoption note	Date of insertion
ACC	arrange customs clearance		
CAL	Carrier loads		
CAU	Carrier unloads		
CMR	CMR carnet		
FFN	freight forwarders national conditions		
FLD	special agreement for full loading		
NCC	do not arrange customs clearance		
PPB	packaging paid by Buyer		
PPS	packaging paid by Supplier		
PRO	proof of delivery		
RFR	return container free		
RPC	return container paid by Customer		
RPS	return container paid by Supplier		
SHL	Shipper loads		
SHU	Consignee unloads		

T4 - fabric piece inner packing (wrapping) 1

code specifying the type of inner wrapping/packing used for the fabric piece

Agency name: eBIZ

tabella cod.: T4

File codes list (Generic code): http://www.ebiz.enea.it/moda-ml/repository/codelist/draft/gc_T4.xml

Code	Description	Adoption note	Date of insertion
A	Folded, whole width		
B	Folded, doubled		
C	Folded, tube products		
D	Spoiled, whole width		
E	Spoiled, doubled, pli: left		

F	Spoiled, doubled, pli: right		
G	Rolled, whole width, single item		
H	Rolled, whole width, several items		
I	Rolled, doubled		
J	Rolled, tube products		

T40 - type of transport means

means of transport, in general or referred to a specific leg

Agency name: eBIZ

tabella cod.: T40

File codes list (Generic code): http://www.ebiz.enea.it/moda-ml/repository/codelist/draft/gc_T40.xml

Code	Description	Adoption note	Date of insertion
AIR	aircraft		
SHP	ship		
TRU	truck		
VAN	van		

T421 - size system: nationality

nation or agency identifying the size system

Agency name: eBIZ

tabella cod.: T421

File codes list (Generic code): http://www.ebiz.enea.it/moda-ml/repository/codelist/draft/gc_T421.xml

Code	Description	Adoption note	Date of insertion
DE	Germany		
ES	Spain		
EU	Europe		
FR	France		
IT	Italy		
UK	United Kingdom		
US	USA		
XX	International		

T422 - size system: market segment

market segment identifying the size system

Agency name: eBIZ

tabella cod.: T422

File codes list (Generic code): http://www.ebiz.enea.it/moda-ml/repository/codelist/draft/gc_T422.xml

Code	Description	Adoption note	Date of insertion
B	baby		
C	child		
K	kid		
M	man		
U	unisex		
W	woman		

T423 - size system: base

base of the size system

Agency name: eBIZ

tabella cod.: T423

File codes list (Generic code): http://www.ebiz.enea.it/moda-ml/repository/codelist/draft/gc_T423.xml

Code	Description	Adoption note	Date of insertion
1	arab numbers		
2	latin numbers		
3	symbols		
4	letters		
H	height		
L	length		
U	unic		
W	weight		

T44 - additional code type

qualifier of the additional coding of a product

Agency name: eBIZ

tabella cod.: T44

File codes list (Generic code): http://www.ebiz.enea.it/moda-ml/repository/codelist/draft/gc_T44.xml

Code	Description	Adoption note	Date of insertion
CC	colour card		
CL	sales collection		
CO	company identification code		08/09/2017
DY	dye number		
LT	lot number		
MDI	Made in		08/09/2017
MS	manufacturing state		
PKG	packaging		09/09/2014
PL	product line		
RGB	RGB value		
SE	selvedge code		

T5 - fabric piece inner packing (wrapping) 2

code specifying the sub-type of inner wrapping/packing used for the fabric piece

Agency name: eBIZ

tabella cod.: T5

File codes list (Generic code): http://www.ebiz.enea.it/moda-ml/repository/codelist/draft/gc_T5.xml

Code	Description	Adoption note	Date of insertion
A	Open		
B	Folded once, not looped		
C	Folded twice, not looped		
H	Folded once, looped		
I	Folded twice, looped		
J	Without inner object, right side inside		
K	On carton or spooling plank, right side inside		
L	On spool (for pressure sensitive products), right side inside		
M	Without inner object, left side inside		
N	On carton or spooling plank, left side inside		
O	On spool (for pressure sensitive products), left side inside		

P	Without inner object, right side inside (deprecated code)		
Q	On carton, right side inside		
R	On wooden stick, right side inside		
S	Without inner object, left side inside (deprecated code)		
T	On carton, left side inside		
U	On wooden stick, left side inside		

T6 - fabric piece outer packing

code specifying the type of outer wrapping or packing used for the fabric piece

Agency name: eBIZ

tabella cod.: T6

File codes list (Generic code): http://www.ebiz.enea.it/moda-ml/repository/codelist/draft/gc_T6.xml

Code	Description	Adoption note	Date of insertion
0	Not wrapped		
1	Totally wrapped		
2	Wrapped, one side open		
3	Wrapped, both sides open		
4	Wrapped, one side open, with show corner		
5	Wrapped in cartons		
6	Double wrapped		

T8 - Modes of Transport

way of transport, in general or referred to the specified leg

Agency name: eBIZ

tabella cod.: T8

File codes list (Generic code): http://www.ebiz.enea.it/moda-ml/repository/codelist/draft/gc_T8.xml

Code	Description	Adoption note	Date of insertion
1	MARITIME TRANSPORT		
10	Courier		01/07/2013
2	RAIL TRANSPORT		
3	ROAD TRANSPORT		
4	AIR TRANSPORT		

5	MAIL		
6	AIR + SHIP TRANSPORT		
8	INLAND WATER TRANSPORT		
9	MODE UNKNOWN		